



**Smithsonian Institution**

*Smithsonian Libraries*

## **Boethius' De institutione arithmetica**

Extracted on Jan-18-2022 04:37:16

**The Smithsonian Institution thanks all digital volunteers that transcribed and reviewed this material. Your work enriches Smithsonian collections, making them available to anyone with an interest in using them.**

The Smithsonian Institution (the "Smithsonian") provides the content on this website ([transcription.si.edu](https://transcription.si.edu)), other Smithsonian websites, and third-party sites on which it maintains a presence ("SI Websites") in support of its mission for the "increase and diffusion of knowledge." The Smithsonian invites visitors to use its online content for personal, educational and other non-commercial purposes. By using this website, you accept and agree to abide by the [following terms](#).

- If sharing the material in personal and educational contexts, please cite the Smithsonian Libraries as source of the content and the project title as provided at the top of the document. Include the accession number or collection name; when possible, link to the Smithsonian Libraries website.
- If you wish to use this material in a for-profit publication, exhibition, or online project, please contact Smithsonian Libraries or [transcribe@si.edu](mailto:transcribe@si.edu)

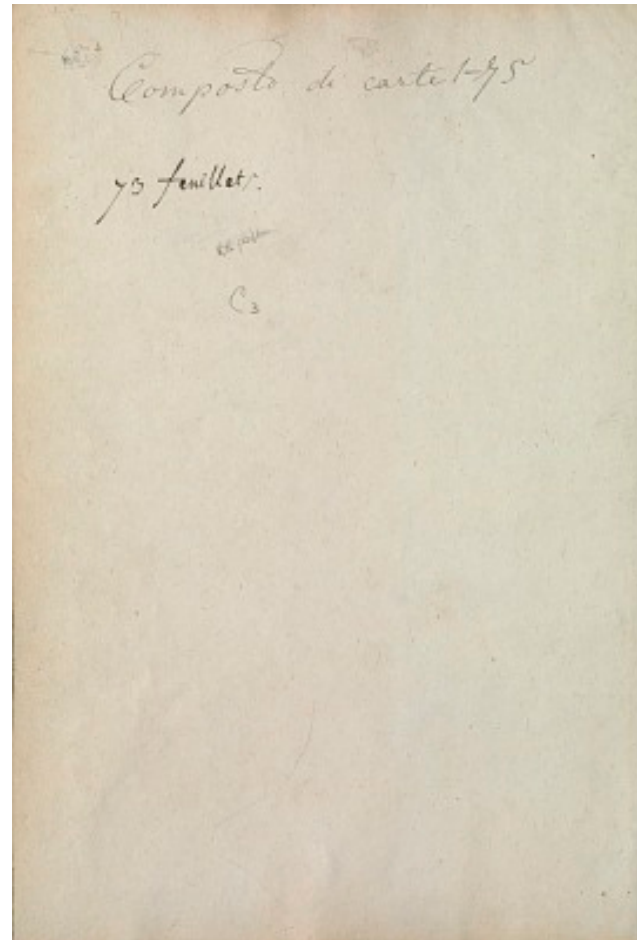
For more information on this project and related material, contact the Smithsonian Libraries. [See this project](#) and other collections in the Smithsonian Transcription Center.

Composto di carte 1 -GS

73 feuillets.

RE/6/L

C3



Boethius' De institutione arithmetica  
Transcribed and Reviewed by Digital Volunteers  
Approved by Smithsonian Staff  
Extracted Jan-18-2022 04:37:16



## Smithsonian Institution

*Smithsonian Libraries*

The mission of the Smithsonian is the increase and diffusion of knowledge - shaping the future by preserving our heritage, discovering new knowledge, and sharing our resources with the world. Founded in 1846, the Smithsonian is the world's largest museum and research complex, consisting of 19 museums and galleries, the National Zoological Park, and nine research facilities. Become an active part of our mission through the Transcription Center. Together, we are discovering secrets hidden deep inside our collections that illuminate our history and our world.

Join us!

The Transcription Center: <https://transcription.si.edu>

On Facebook: <https://www.facebook.com/SmithsonianTranscriptionCenter>

On Twitter: [@TranscribeSI](https://twitter.com/TranscribeSI)

Connect with the Smithsonian

Smithsonian Institution: [www.si.edu](http://www.si.edu)

On Facebook: <https://www.facebook.com/Smithsonian>

On Twitter: [@smithsonian](https://twitter.com/smithsonian)