



Smithsonian Institution

Smithsonian Institution Archives

Bailey - Field notes, Pennsylvania, Wyoming, South Dakota, and Montana, December, 1893 - August, 1894

Extracted on Mar-28-2024 02:20:54

The Smithsonian Institution thanks all digital volunteers that transcribed and reviewed this material. Your work enriches Smithsonian collections, making them available to anyone with an interest in using them.

The Smithsonian Institution (the "Smithsonian") provides the content on this website (transcription.si.edu), other Smithsonian websites, and third-party sites on which it maintains a presence ("SI Websites") in support of its mission for the "increase and diffusion of knowledge." The Smithsonian invites visitors to use its online content for personal, educational and other non-commercial purposes. By using this website, you accept and agree to abide by the [following terms](#).

- If sharing the material in personal and educational contexts, please cite the Smithsonian Institution Archives as source of the content and the project title as provided at the top of the document. Include the accession number or collection name; when possible, link to the Smithsonian Institution Archives website.
- If you wish to use this material in a for-profit publication, exhibition, or online project, please contact Smithsonian Institution Archives or transcribe@si.edu

For more information on this project and related material, contact the Smithsonian Institution Archives. [See this project](#) and other collections in the Smithsonian Transcription Center.

May 7. 1894
To Ewing 1 hour.

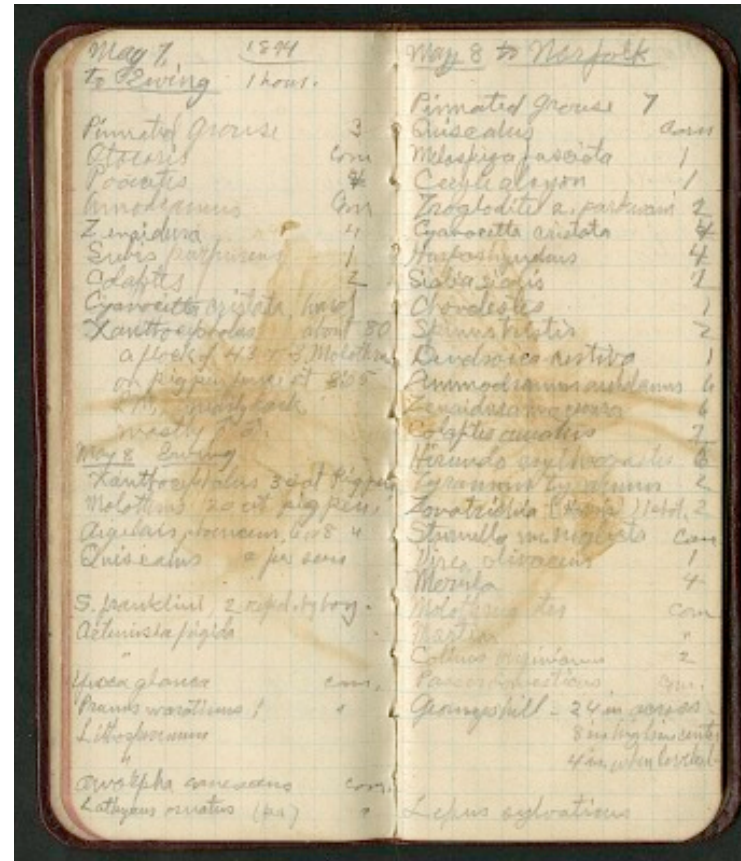
Pinnated grouse 3
 Otocoris Com
 Poocatis ~~2~~ ~~4~~
 Amodramus Com
 Zenaidura 4
 Subis purpureus 1
 Colaptes 2
 Cyanocitta cristata, heard
 Xanthocephalus about 80
 a flock of 43 & 3 Molothrus on pig pen fence at 8:08 P.M. nearly dark
 mostly ~~2~~ male symbols
May 8 Ewing
 Xanthocephalus 30 at Pig pen
 Molothrus 20 at pig pen
 Aegialais phoeniceus, 6 or 8 " ~~[[Ditto for: at pig pen]]~~
 Quiscalus a few seen

S. franklini, 2 repd by boy.
 Artemisia frigida
 " ~~[[Ditto for: Artemisia]]~~
 Yucca glauca com.
 Prunus ~~[[marotimus?]]~~ ? " ~~[[Ditto for: com]]~~
 Lithospermum
 " ~~[[Ditto for: Lithospermum]]~~
 Amorpha canescens com.
 Lathyrus ornatus (pea) " ~~[[Ditto for: com]]~~

~~[[end page]]~~
~~[[start page]]~~

May 8 to Norfolk

Pinnated grouse 7
 Quiscalus com
 Melospiza fasciata 1
 Ceryle alcyon 1
 Troglodites a. ~~[[parkwain?]]~~ 2
 Cyanocitta cristata 4
 Harporhynchus 4
 Sialia sialis 2
 Chondestes 1
 Spinus tristis 2
 Dendroica aestiva 1
~~[[Ammodramus archdanus?]]~~ 6
 Zenaidura macroura 6
 Colaptes auratus 2
 Hirundo erythrogaster 7
 Tyrannus tyrannus 2
 Zonotrichia (Harris) 1 shot. 2
 Sturnella var. neglecta com
 Vireo olivaceus 1
 Merula 4
 Molothrus ater com
 Martin " ~~[[Ditto for: com]]~~
 Colinus virginianus 2
 Passer domesticus. com.



Geomys hill - 24 in across
8 in high in center
4 in when leveled

Lepus sylvaticus

Bailey - Field notes, Pennsylvania, Wyoming, South Dakota, and Montana,
December, 1893 - August, 1894
Transcribed and Reviewed by Digital Volunteers
Extracted Mar-28-2024 02:20:54



Smithsonian Institution

Smithsonian Institution Archives

The mission of the Smithsonian is the increase and diffusion of knowledge - shaping the future by preserving our heritage, discovering new knowledge, and sharing our resources with the world. Founded in 1846, the Smithsonian is the world's largest museum and research complex, consisting of 19 museums and galleries, the National Zoological Park, and nine research facilities. Become an active part of our mission through the Transcription Center. Together, we are discovering secrets hidden deep inside our collections that illuminate our history and our world.

Join us!

The Transcription Center: <https://transcription.si.edu>

On Facebook: <https://www.facebook.com/SmithsonianTranscriptionCenter>

On Twitter: [@TranscribeSI](https://twitter.com/TranscribeSI)

Connect with the Smithsonian

Smithsonian Institution: www.si.edu

On Facebook: <https://www.facebook.com/Smithsonian>

On Twitter: [@smithsonian](https://twitter.com/smithsonian)