



Smithsonian Institution

Smithsonian Institution Archives

Waldo L. Schmitt - Diary 2 of 2 From Palmer Peninsula (Antarctica) Survey, 1962-1963

Extracted on Oct-04-2022 03:43:07

The Smithsonian Institution thanks all digital volunteers that transcribed and reviewed this material. Your work enriches Smithsonian collections, making them available to anyone with an interest in using them.

The Smithsonian Institution (the "Smithsonian") provides the content on this website (transcription.si.edu), other Smithsonian websites, and third-party sites on which it maintains a presence ("SI Websites") in support of its mission for the "increase and diffusion of knowledge." The Smithsonian invites visitors to use its online content for personal, educational and other non-commercial purposes. By using this website, you accept and agree to abide by the [following terms](#).

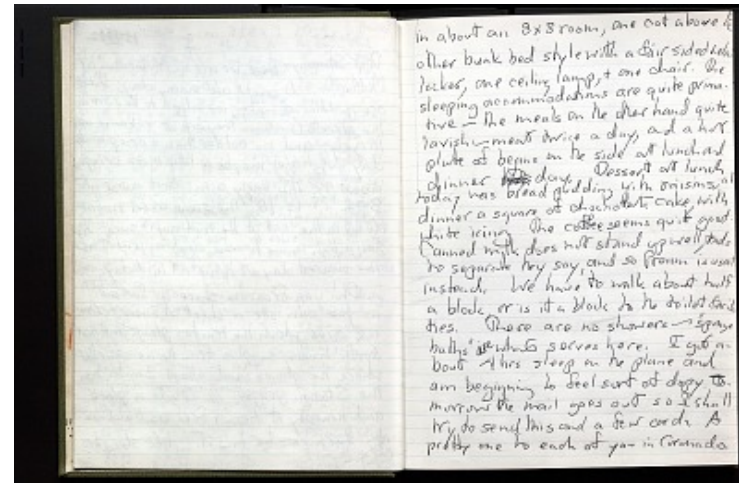
- If sharing the material in personal and educational contexts, please cite the Smithsonian Institution Archives as source of the content and the project title as provided at the top of the document. Include the accession number or collection name; when possible, link to the Smithsonian Institution Archives website.
- If you wish to use this material in a for-profit publication, exhibition, or online project, please contact Smithsonian Institution Archives or transcribe@si.edu

For more information on this project and related material, contact the Smithsonian Institution Archives. [See this project](#) and other collections in the Smithsonian Transcription Center.

[[blank page]]

[[end page]]
[[start page]]

In about an 8x8 room, one cot above the other bunk bed style with a fair sided locker, one ceiling lamp, & one chair. The sleeping accommodations are quite primitive - the meals on the other hand quite lavish - meat twice a day, and a hot plate of beans on the side at lunch and dinner ~~[[?]]~~ ~~[[?]]~~ ~~[[insertion]]~~ to ~~[[insertion]]~~ day. Dessert at lunch today was bread pudding with raisins; at dinner a square of chocolate cake with white icing. The coffee seems quite good. Canned milk does not stand up well, tends to separate they say, and so Proam is used instead. We have to walk about half a block, or is it a block to the toilet facilities. There are no showers - "sponge baths" are what serves here. I got about 4 hrs sleep on the plane and am beginning to feel sort of dopy. Tomorrow the mail goes out so I shall try to send this and a few cards. A pretty one to each of you in Coronado.



Waldo L. Schmitt - Diary 2 of 2 From Palmer Peninsula (Antarctica) Survey, 1962-1963

Transcribed and Reviewed by Digital Volunteers
Extracted Oct-04-2022 03:43:07



Smithsonian Institution

Smithsonian Institution Archives

The mission of the Smithsonian is the increase and diffusion of knowledge - shaping the future by preserving our heritage, discovering new knowledge, and sharing our resources with the world. Founded in 1846, the Smithsonian is the world's largest museum and research complex, consisting of 19 museums and galleries, the National Zoological Park, and nine research facilities. Become an active part of our mission through the Transcription Center. Together, we are discovering secrets hidden deep inside our collections that illuminate our history and our world.

Join us!

The Transcription Center: <https://transcription.si.edu>

On Facebook: <https://www.facebook.com/SmithsonianTranscriptionCenter>

On Twitter: [@TranscribeSI](https://twitter.com/TranscribeSI)

Connect with the Smithsonian

Smithsonian Institution: www.si.edu

On Facebook: <https://www.facebook.com/Smithsonian>

On Twitter: [@smithsonian](https://twitter.com/smithsonian)