



Smithsonian Institution

Smithsonian Institution Archives

Waldo L. Schmitt - Diary 2 of 2 From Palmer Peninsula (Antarctica) Survey, 1962-1963

Extracted on Apr-19-2024 02:17:21

The Smithsonian Institution thanks all digital volunteers that transcribed and reviewed this material. Your work enriches Smithsonian collections, making them available to anyone with an interest in using them.

The Smithsonian Institution (the "Smithsonian") provides the content on this website (transcription.si.edu), other Smithsonian websites, and third-party sites on which it maintains a presence ("SI Websites") in support of its mission for the "increase and diffusion of knowledge." The Smithsonian invites visitors to use its online content for personal, educational and other non-commercial purposes. By using this website, you accept and agree to abide by the [following terms](#).

- If sharing the material in personal and educational contexts, please cite the Smithsonian Institution Archives as source of the content and the project title as provided at the top of the document. Include the accession number or collection name; when possible, link to the Smithsonian Institution Archives website.
- If you wish to use this material in a for-profit publication, exhibition, or online project, please contact Smithsonian Institution Archives or transcribe@si.edu

For more information on this project and related material, contact the Smithsonian Institution Archives. [See this project](#) and other collections in the Smithsonian Transcription Center.

[[blank page]]

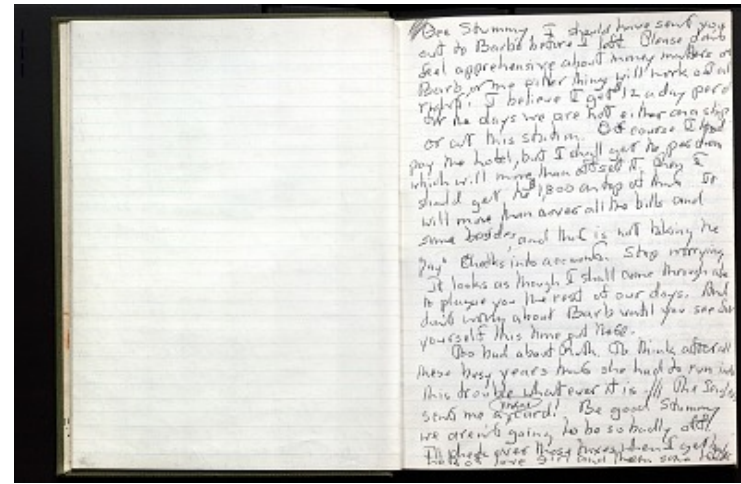
[[end page]]

[[start page]]

///

Gee Stummy, I should have sent you out to Barb's before I left. Please don't feel apprehensive about money matters or Barb, or me either things will work out alright. I believe I get \$12 a day per d for the days we are not either on a ship or at this station. Of course I [[Had?]] pay the hotel, but I shall get the per diem which will more than offset it. Then I should get the \$1,800 on top of that. It will more than cover all the bills and some besides, and that is not taking the "pay" checks into account. Stop worrying. It looks as though I shall come through alive to plague you the rest of our days. And don't worry about Barb until you see for yourself this time out there.

Too bad about Ruth. To think after all these busy years that she had to run into this trouble what ever it is. ||| The Seiglers sent me a ^
[[insertion]] Xmas [[/insertion]] card! Be good Stummy we aren't going to be so badly off. I'll check over those taxes when I get back
Lots of love girl and then some Waldo



Waldo L. Schmitt - Diary 2 of 2 From Palmer Peninsula (Antarctica) Survey, 1962-1963
Transcribed and Reviewed by Digital Volunteers
Extracted Apr-19-2024 02:17:21



Smithsonian Institution

Smithsonian Institution Archives

The mission of the Smithsonian is the increase and diffusion of knowledge - shaping the future by preserving our heritage, discovering new knowledge, and sharing our resources with the world. Founded in 1846, the Smithsonian is the world's largest museum and research complex, consisting of 19 museums and galleries, the National Zoological Park, and nine research facilities. Become an active part of our mission through the Transcription Center. Together, we are discovering secrets hidden deep inside our collections that illuminate our history and our world.

Join us!

The Transcription Center: <https://transcription.si.edu>

On Facebook: <https://www.facebook.com/SmithsonianTranscriptionCenter>

On Twitter: [@TranscribeSI](https://twitter.com/TranscribeSI)

Connect with the Smithsonian

Smithsonian Institution: www.si.edu

On Facebook: <https://www.facebook.com/Smithsonian>

On Twitter: [@smithsonian](https://twitter.com/smithsonian)