



**Smithsonian Institution**

*Smithsonian Institution Archives*

## **Waldo L. Schmitt - Diary 2 of 2 From Palmer Peninsula (Antarctica) Survey, 1962-1963**

Extracted on Apr-18-2024 07:07:12

**The Smithsonian Institution thanks all digital volunteers that transcribed and reviewed this material. Your work enriches Smithsonian collections, making them available to anyone with an interest in using them.**

The Smithsonian Institution (the "Smithsonian") provides the content on this website ([transcription.si.edu](https://transcription.si.edu)), other Smithsonian websites, and third-party sites on which it maintains a presence ("SI Websites") in support of its mission for the "increase and diffusion of knowledge." The Smithsonian invites visitors to use its online content for personal, educational and other non-commercial purposes. By using this website, you accept and agree to abide by the [following terms](#).

- If sharing the material in personal and educational contexts, please cite the Smithsonian Institution Archives as source of the content and the project title as provided at the top of the document. Include the accession number or collection name; when possible, link to the Smithsonian Institution Archives website.
- If you wish to use this material in a for-profit publication, exhibition, or online project, please contact Smithsonian Institution Archives or [transcribe@si.edu](mailto:transcribe@si.edu)

For more information on this project and related material, contact the Smithsonian Institution Archives. [See this project](#) and other collections in the Smithsonian Transcription Center.

[[blank page]]

[[end page]]

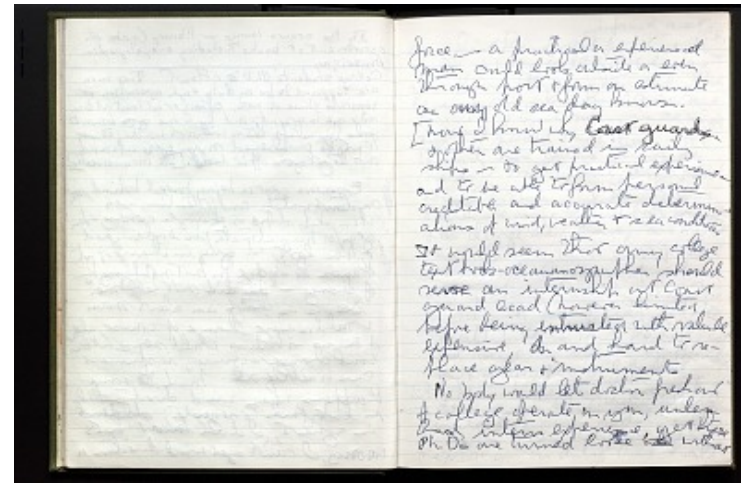
[[start page]]

force - a practical or experienced man could look outside or even through port & form an estimate as any old sea dog knows.

[Now I know why Coast guards & others are trained in sailing ships - to get practical experience - and to be able to form personal creditable and accurate determinations of wind, weather & sea conditions.

It would seem that any college textbook-oceanographer should serve an internship at Coast guard Acad (however limited before being entrusted with valuable expensive ~~di~~ and hard to replace gear & instruments

Nobody would let doctors fresh out of college operate on you, unless had interns experience, yet these Ph.D's are turned loose ~~wh~~ without



Waldo L. Schmitt - Diary 2 of 2 From Palmer Peninsula (Antarctica) Survey, 1962-1963

Transcribed and Reviewed by Digital Volunteers

Extracted Apr-18-2024 07:07:12



## Smithsonian Institution

*Smithsonian Institution Archives*

The mission of the Smithsonian is the increase and diffusion of knowledge - shaping the future by preserving our heritage, discovering new knowledge, and sharing our resources with the world. Founded in 1846, the Smithsonian is the world's largest museum and research complex, consisting of 19 museums and galleries, the National Zoological Park, and nine research facilities. Become an active part of our mission through the Transcription Center. Together, we are discovering secrets hidden deep inside our collections that illuminate our history and our world.

Join us!

The Transcription Center: <https://transcription.si.edu>

On Facebook: <https://www.facebook.com/SmithsonianTranscriptionCenter>

On Twitter: [@TranscribeSI](https://twitter.com/TranscribeSI)

Connect with the Smithsonian

Smithsonian Institution: [www.si.edu](http://www.si.edu)

On Facebook: <https://www.facebook.com/Smithsonian>

On Twitter: [@smithsonian](https://twitter.com/smithsonian)