



**Smithsonian Institution**

*Smithsonian Institution Archives*

## **Waldo L. Schmitt - Diary 2 of 2 From Palmer Peninsula (Antarctica) Survey, 1962-1963**

Extracted on Mar-29-2024 10:15:38

**The Smithsonian Institution thanks all digital volunteers that transcribed and reviewed this material. Your work enriches Smithsonian collections, making them available to anyone with an interest in using them.**

The Smithsonian Institution (the "Smithsonian") provides the content on this website ([transcription.si.edu](https://transcription.si.edu)), other Smithsonian websites, and third-party sites on which it maintains a presence ("SI Websites") in support of its mission for the "increase and diffusion of knowledge." The Smithsonian invites visitors to use its online content for personal, educational and other non-commercial purposes. By using this website, you accept and agree to abide by the [following terms](#).

- If sharing the material in personal and educational contexts, please cite the Smithsonian Institution Archives as source of the content and the project title as provided at the top of the document. Include the accession number or collection name; when possible, link to the Smithsonian Institution Archives website.
- If you wish to use this material in a for-profit publication, exhibition, or online project, please contact Smithsonian Institution Archives or [transcribe@si.edu](mailto:transcribe@si.edu)

For more information on this project and related material, contact the Smithsonian Institution Archives. [See this project](#) and other collections in the Smithsonian Transcription Center.

[[blank page]]

[[end page]]

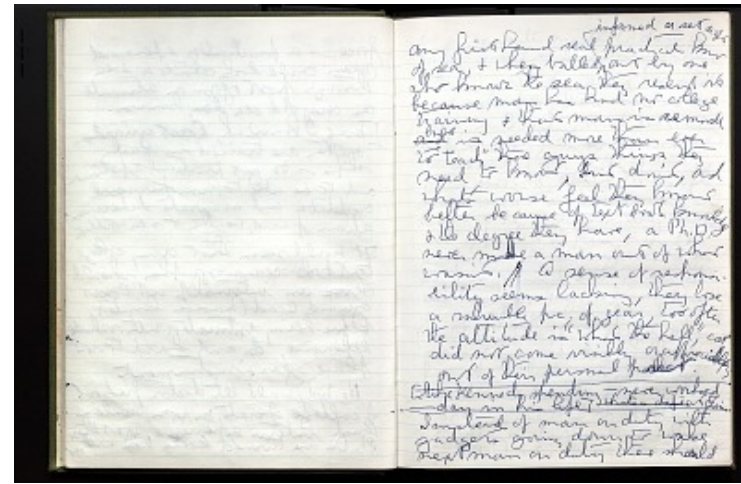
[[start page]]

any first hand real practical <sup>informed or set</sup> of sea, & when balled <sup>right</sup> out by one who knows the sea they resent it because man has had no college training & that man is ~~needed~~ <sup>is</sup> needed more than ever to "teach" those guys things they need to know, but don't, and what's worse feel they know better because of textbook knowledge & the degree they have, a Ph.D. never made a man out of what wasn't. // A sense of responsibility seems lacking, they lose a valuable pc. of gear, too often the attitude is "what the hell", cost did not come visibly or appreciably out of their personal pocket.  
[[line across page]]

[[like Kennedy spending - never worked - day in his life]. Whats a deficit to him.

[[line across page]]

Instead of man on duty with gadgets going down to wake next man on duty there should



Waldo L. Schmitt - Diary 2 of 2 From Palmer Peninsula (Antarctica) Survey, 1962-1963

Transcribed and Reviewed by Digital Volunteers

Extracted Mar-29-2024 10:15:38



## Smithsonian Institution

*Smithsonian Institution Archives*

The mission of the Smithsonian is the increase and diffusion of knowledge - shaping the future by preserving our heritage, discovering new knowledge, and sharing our resources with the world. Founded in 1846, the Smithsonian is the world's largest museum and research complex, consisting of 19 museums and galleries, the National Zoological Park, and nine research facilities. Become an active part of our mission through the Transcription Center. Together, we are discovering secrets hidden deep inside our collections that illuminate our history and our world.

Join us!

The Transcription Center: <https://transcription.si.edu>

On Facebook: <https://www.facebook.com/SmithsonianTranscriptionCenter>

On Twitter: [@TranscribeSI](https://twitter.com/TranscribeSI)

Connect with the Smithsonian

Smithsonian Institution: [www.si.edu](http://www.si.edu)

On Facebook: <https://www.facebook.com/Smithsonian>

On Twitter: [@smithsonian](https://twitter.com/smithsonian)