



Smithsonian Institution

Smithsonian Institution Archives

A brief report on a trip to Ecuador, Peru and Bolivia, 1923-1924

Extracted on Apr-24-2024 01:49:36

The Smithsonian Institution thanks all digital volunteers that transcribed and reviewed this material. Your work enriches Smithsonian collections, making them available to anyone with an interest in using them.

The Smithsonian Institution (the "Smithsonian") provides the content on this website (transcription.si.edu), other Smithsonian websites, and third-party sites on which it maintains a presence ("SI Websites") in support of its mission for the "increase and diffusion of knowledge." The Smithsonian invites visitors to use its online content for personal, educational and other non-commercial purposes. By using this website, you accept and agree to abide by the [following terms](#).

- If sharing the material in personal and educational contexts, please cite the Smithsonian Institution Archives as source of the content and the project title as provided at the top of the document. Include the accession number or collection name; when possible, link to the Smithsonian Institution Archives website.
- If you wish to use this material in a for-profit publication, exhibition, or online project, please contact Smithsonian Institution Archives or transcribe@si.edu

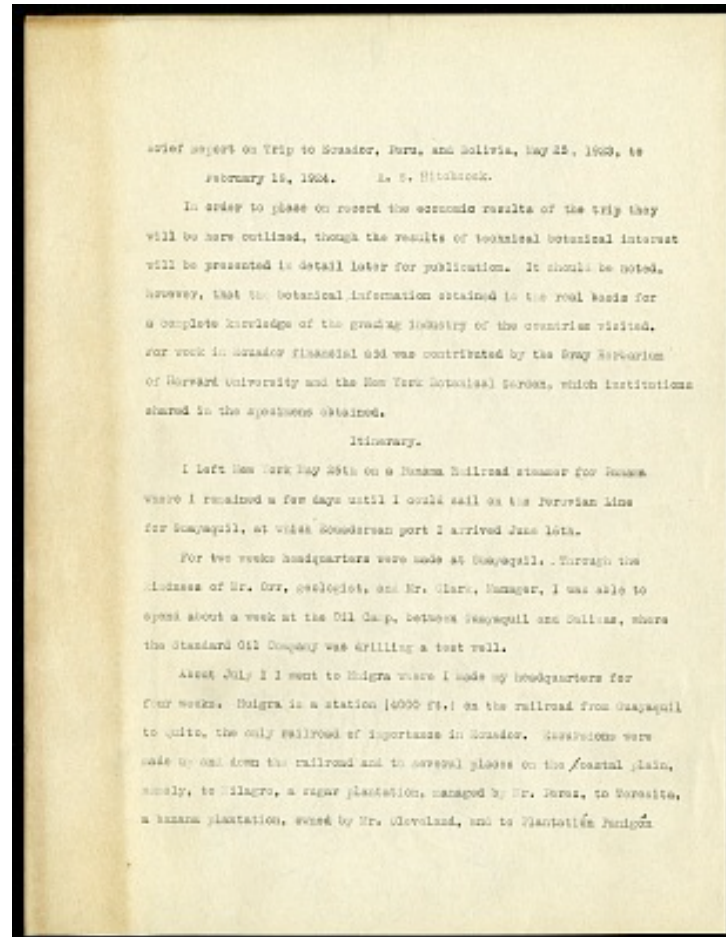
For more information on this project and related material, contact the Smithsonian Institution Archives. [See this project](#) and other collections in the Smithsonian Transcription Center.

Brief Report on Trip to Ecuador, Peru, and Bolivia, May 25, 1923, to February, 18, 1924. A. S. Hitchcock
In order to place on record the economic results of the trip they will be here outlined, though the results of technical botanical interest will be presented in detail later for publication. It should be noted, however, that the botanical information obtained is the real basis for a complete knowledge of the grazing industry of the countries visited. For work in Ecuador financial aid was contributed by the Gray Herbarium of Harvard University and the New York Botanical Garden, which institutions shared in the specimens obtained.

Itinerary.

I left New York May 25th on a Panama Railroad steamer for Panama where I remained a few days until I could sail on the Peruvian Line for Guayaquil, at which Ecuadorean port I arrived June 16th. For two weeks headquarters were made at Guayaquil. Through the kindness of Mr. Orr, geologist, and Mr. Clark, Manager, I was able to spend about a week at the Oil Camp, between Guayaquil and Salinas, where the Standard Oil Company was drilling a test well.

About July 1 I went to Huigra where I made my headquarters for four weeks. Huigra is a station (4000 ft.) on the railroad from Guayaquil to Quito, the only railroad of importance in Ecuador. Excursions were made up and down the railroad and to several places on the coastal plain, namely, to Milagro, a sugar plantation, managed by Mr. Perez, to Teresita, a banana plantation, owned by Mr. Cleveland, and to Plantación Panigón



A brief report on a trip to Ecuador, Peru and Bolivia, 1923-1924
Transcribed and Reviewed by Digital Volunteers
Extracted Apr-24-2024 01:49:36



Smithsonian Institution

Smithsonian Institution Archives

The mission of the Smithsonian is the increase and diffusion of knowledge - shaping the future by preserving our heritage, discovering new knowledge, and sharing our resources with the world. Founded in 1846, the Smithsonian is the world's largest museum and research complex, consisting of 19 museums and galleries, the National Zoological Park, and nine research facilities. Become an active part of our mission through the Transcription Center. Together, we are discovering secrets hidden deep inside our collections that illuminate our history and our world.

Join us!

The Transcription Center: <https://transcription.si.edu>

On Facebook: <https://www.facebook.com/SmithsonianTranscriptionCenter>

On Twitter: [@TranscribeSI](https://twitter.com/TranscribeSI)

Connect with the Smithsonian

Smithsonian Institution: www.si.edu

On Facebook: <https://www.facebook.com/Smithsonian>

On Twitter: [@smithsonian](https://twitter.com/smithsonian)