



Smithsonian Institution

Archives Center - NMAH

Leo Baekeland Diary Volume 23, 1917

Extracted on May-04-2024 07:04:01

The Smithsonian Institution thanks all digital volunteers that transcribed and reviewed this material. Your work enriches Smithsonian collections, making them available to anyone with an interest in using them.

The Smithsonian Institution (the "Smithsonian") provides the content on this website (transcription.si.edu), other Smithsonian websites, and third-party sites on which it maintains a presence ("SI Websites") in support of its mission for the "increase and diffusion of knowledge." The Smithsonian invites visitors to use its online content for personal, educational and other non-commercial purposes. By using this website, you accept and agree to abide by the [following terms](#).

- If sharing the material in personal and educational contexts, please cite the Archives Center - NMAH as source of the content and the project title as provided at the top of the document. Include the accession number or collection name; when possible, link to the Archives Center - NMAH website.
- If you wish to use this material in a for-profit publication, exhibition, or online project, please contact Archives Center - NMAH or transcribe@si.edu

For more information on this project and related material, contact the Archives Center - NMAH. [See this project](#) and other collections in the Smithsonian Transcription Center.

172

ducks so tame that they swam quite close to boat. Stormy northerly blowing all night. Quiet place. no mosquitoes and nobody to dispute our right of way altho' we obstructed the narrow 40 foot channel. Later on we found that next point called Boca Raton would have been more pleasant specially as it is another a few hundred feet of the Ocean.

Nov. 26. Left at 5 30

AM. thru some winding canals. Near Lake Boca Raton a drawbridge and a settlement which looks quite pretty with its bright houses or bungalows and a grove of Coconut palms. All

end page

start page

173

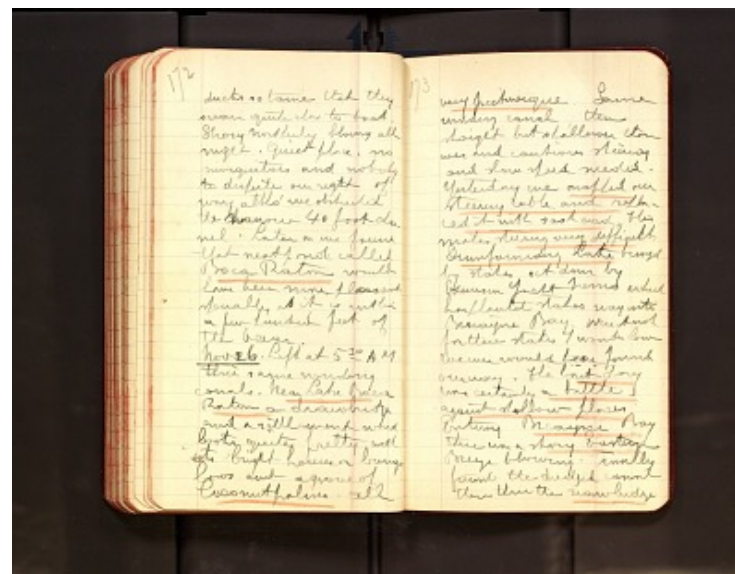
very picturesque. Some winding canal then straight but shallower than ever and cautious steering and slow speed needed. Yesterday we snapped our steering cable and replaced it with sash cord, this makes steering very difficult.

Dumfounding Lake buoyed by stakes set down by Excursion Yacht Nemo which has planted stakes way into Biscayne Bay. Were it not for these stakes I wonder how we ever would have found our way. The last day was certainly a battle against shallow places.

Entering Biscayne Bay

there was a strong Eastern

Breeze blowing. Finally found the dredged canal then thru the drawbridge



Leo Baekeland Diary Volume 23, 1917
Transcribed and Reviewed by Digital Volunteers
Extracted May-04-2024 07:04:01



Smithsonian Institution

Archives Center - NMAH

The mission of the Smithsonian is the increase and diffusion of knowledge - shaping the future by preserving our heritage, discovering new knowledge, and sharing our resources with the world. Founded in 1846, the Smithsonian is the world's largest museum and research complex, consisting of 19 museums and galleries, the National Zoological Park, and nine research facilities. Become an active part of our mission through the Transcription Center. Together, we are discovering secrets hidden deep inside our collections that illuminate our history and our world.

Join us!

The Transcription Center: <https://transcription.si.edu>

On Facebook: <https://www.facebook.com/SmithsonianTranscriptionCenter>

On Twitter: [@TranscribeSI](https://twitter.com/TranscribeSI)

Connect with the Smithsonian

Smithsonian Institution: www.si.edu

On Facebook: <https://www.facebook.com/Smithsonian>

On Twitter: [@smithsonian](https://twitter.com/smithsonian)