



**Smithsonian Institution**

*Archives Center - NMAH*

## **Leo Baekeland Diary Volume 44, 1927**

Extracted on Apr-17-2024 05:08:37

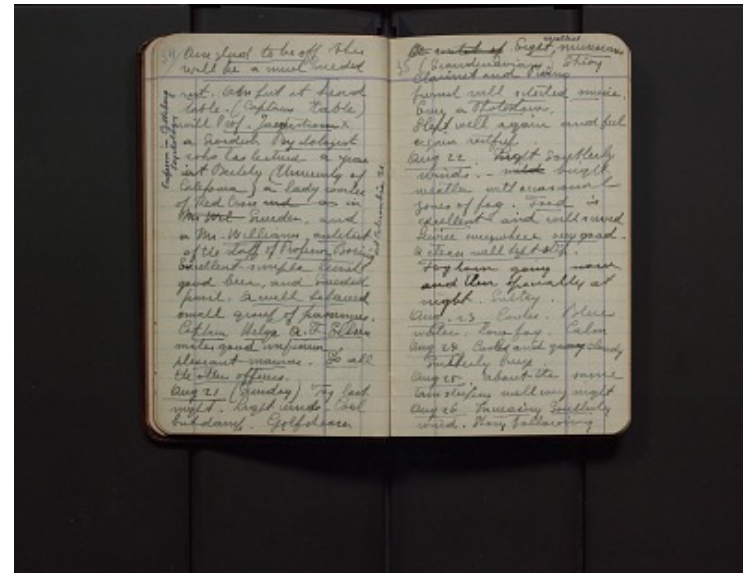
**The Smithsonian Institution thanks all digital volunteers that transcribed and reviewed this material. Your work enriches Smithsonian collections, making them available to anyone with an interest in using them.**

The Smithsonian Institution (the "Smithsonian") provides the content on this website ([transcription.si.edu](https://transcription.si.edu)), other Smithsonian websites, and third-party sites on which it maintains a presence ("SI Websites") in support of its mission for the "increase and diffusion of knowledge." The Smithsonian invites visitors to use its online content for personal, educational and other non-commercial purposes. By using this website, you accept and agree to abide by the [following terms](#).

- If sharing the material in personal and educational contexts, please cite the Archives Center - NMAH as source of the content and the project title as provided at the top of the document. Include the accession number or collection name; when possible, link to the Archives Center - NMAH website.
- If you wish to use this material in a for-profit publication, exhibition, or online project, please contact Archives Center - NMAH or [transcribe@si.edu](mailto:transcribe@si.edu)

For more information on this project and related material, contact the Archives Center - NMAH. [See this project](#) and other collections in the Smithsonian Transcription Center.

34  
 Am glad to be off This will be a much needed rest.  
 Am put at head table. (Captains table) with Prof. Jaegerstrom x a Swedish Psychologist  
 [[Left margin written vertically]] Professor in Goteberg Psychology [[Left margin written vertically]]  
 who has lectured a year at Berkely (University of California) a lady worker of Red Cross ~~Mr Wil~~ and a ~~Mr.~~  
Williams, architect of the staff of Professor Boring at Columbia U. Excellent simple lunch  
good beer, and Swedish punch. A well behaved  
small group of passengers. Captain Helge  
A. F. Ellsen makes good impression. pleasant manners. So all the other officers.  
Aug 21 (Sunday) Fog last night. Light winds. Cool but damp. Gulfstream  
 [[end page]]  
 [[start page]]  
 35  
~~A sextet of~~ Eight  
<sup>^</sup>musicians (Scandinavians) String Clarinet  
 and Piano furnish well selected music. Even  
a Photoshow. Slept well again and feel  
again restful.  
Aug 22. Light Southerly winds. -  
~~mild~~ bright weather with occasional  
zones of fog. Food is excellent and well  
 served Service everywhere very good - A clean well kept  
 ship. Fog horn going now and then specially at night.  
 Sultry.  
Aug. 23 Cooler. Blue water. Low fog. Calm  
Aug 24 Cooler and ~~gray~~  
~~cloudy~~ Southerly breeze.  
Aug 25 About the same Am sleeping well  
 every night  
Aug 26 Increasing Southerly wind. Story  
 following



Leo Baekeland Diary Volume 44, 1927  
 Transcribed and Reviewed by Digital Volunteers  
 Extracted Apr-17-2024 05:08:37



## Smithsonian Institution

*Archives Center - NMAH*

The mission of the Smithsonian is the increase and diffusion of knowledge - shaping the future by preserving our heritage, discovering new knowledge, and sharing our resources with the world. Founded in 1846, the Smithsonian is the world's largest museum and research complex, consisting of 19 museums and galleries, the National Zoological Park, and nine research facilities. Become an active part of our mission through the Transcription Center. Together, we are discovering secrets hidden deep inside our collections that illuminate our history and our world.

Join us!

The Transcription Center: <https://transcription.si.edu>

On Facebook: <https://www.facebook.com/SmithsonianTranscriptionCenter>

On Twitter: [@TranscribeSI](https://twitter.com/TranscribeSI)

Connect with the Smithsonian

Smithsonian Institution: [www.si.edu](http://www.si.edu)

On Facebook: <https://www.facebook.com/Smithsonian>

On Twitter: [@smithsonian](https://twitter.com/smithsonian)