



Smithsonian Institution

Archives Center - NMAH

Leo Baekeland Diary Volume 51, 1932

Extracted on Apr-19-2024 01:10:54

The Smithsonian Institution thanks all digital volunteers that transcribed and reviewed this material. Your work enriches Smithsonian collections, making them available to anyone with an interest in using them.

The Smithsonian Institution (the "Smithsonian") provides the content on this website (transcription.si.edu), other Smithsonian websites, and third-party sites on which it maintains a presence ("SI Websites") in support of its mission for the "increase and diffusion of knowledge." The Smithsonian invites visitors to use its online content for personal, educational and other non-commercial purposes. By using this website, you accept and agree to abide by the [following terms](#).

- If sharing the material in personal and educational contexts, please cite the Archives Center - NMAH as source of the content and the project title as provided at the top of the document. Include the accession number or collection name; when possible, link to the Archives Center - NMAH website.
- If you wish to use this material in a for-profit publication, exhibition, or online project, please contact Archives Center - NMAH or transcribe@si.edu

For more information on this project and related material, contact the Archives Center - NMAH. [See this project](#) and other collections in the Smithsonian Transcription Center.

8/

Since then this matter has received careful attention by a purification plant, to such an extent that I saw a school of fish swimming around the very borders of the factory plant where the wastes are discharged. The means employed seem much simpler and incomparably less expensive than what Rossi built at Bound Brook. See full report on waste purification, design of building and equipment, together with cost of building and operation as furnished me by Weger. He tells me the cost of purification is only a small fraction of a cent per lb. of Bakelite. The total cost of factory and equipment inclusive residence houses and mobilier and laboratory is 2,230,000. Reichs Marks or about \$560,000.00.

At present, on account of depression, the plant only works 4 days a week. The whole plant is very well kept as well as court yard and surrounding places. Cheerful and many trees & gardens and living houses, some of them very pretty, others centuries old but well kept. June Dr. Heyl who is next in command to Dr. Weger makes a good impression. Met Dr. Elbel and a few other chemists

[end page]

[start page]

9/

now engaged in research laboratory. Weger took me to his house for luncheon, no others pleasant. Small but pleasant habitation surrounded by little flower and fruit garden well kept.

Everything neat and clean. Weger has a very interesting mineralogical collection, old books etc. Showed me his Diploma from Leipzig University. Ma Summa cum laude. Had a very pleasant and interesting talk with him on many subjects of of general interest. Sunny cheerful of person, very pleasant.

June 3.

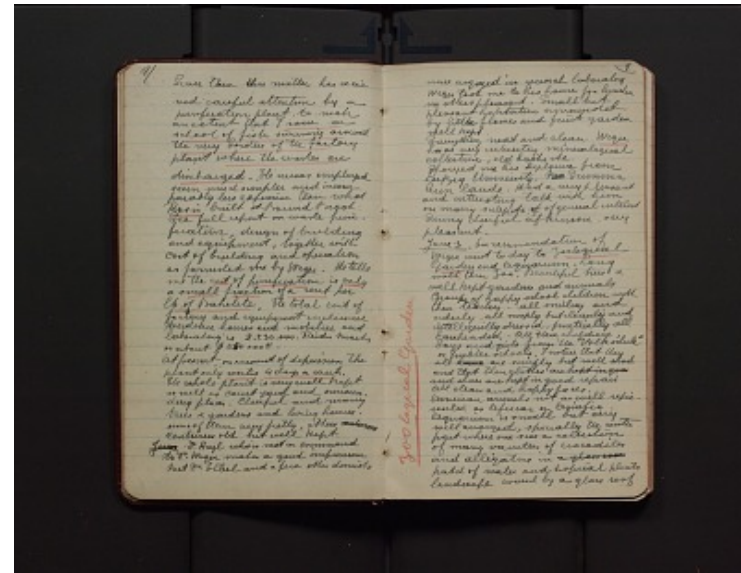
[note in left margin in red] Zoological Garden

[/note in left margin]

On recommendation of Weger went today to Zoological Garden and Aquarium. Long walk thru zoo. Beautiful trees & well kept gardens and animals. Groups of happy school children with their teachers, all smiling and orderly, all simply but cleanly and intelligently dressed, practically all bareheaded. All these children, boys and girls from the "Volkschule," or public schools. I notice that they all have are simply but well shod and that their clothes are kept in good repair. All clean and happy faces.

American animals not as well represented as African or Asiatic.

Aquarium is small but very well arranged, specially the center part where one sees a collection of many varieties of crocodiles and alligators in a glass case patch of water and tropical plants covered by a glass roof



Leo Baekeland Diary Volume 51, 1932
Transcribed and Reviewed by Digital Volunteers
Extracted Apr-19-2024 01:10:54



Smithsonian Institution

Archives Center - NMAH

The mission of the Smithsonian is the increase and diffusion of knowledge - shaping the future by preserving our heritage, discovering new knowledge, and sharing our resources with the world. Founded in 1846, the Smithsonian is the world's largest museum and research complex, consisting of 19 museums and galleries, the National Zoological Park, and nine research facilities. Become an active part of our mission through the Transcription Center. Together, we are discovering secrets hidden deep inside our collections that illuminate our history and our world.

Join us!

The Transcription Center: <https://transcription.si.edu>

On Facebook: <https://www.facebook.com/SmithsonianTranscriptionCenter>

On Twitter: [@TranscribeSI](https://twitter.com/TranscribeSI)

Connect with the Smithsonian

Smithsonian Institution: www.si.edu

On Facebook: <https://www.facebook.com/Smithsonian>

On Twitter: [@smithsonian](https://twitter.com/smithsonian)