



Smithsonian Institution

Smithsonian Institution Archives

Arthur W. Stelfox - Vol. 2, daily lists

Extracted on Apr-23-2024 01:30:20

The Smithsonian Institution thanks all digital volunteers that transcribed and reviewed this material. Your work enriches Smithsonian collections, making them available to anyone with an interest in using them.

The Smithsonian Institution (the "Smithsonian") provides the content on this website (transcription.si.edu), other Smithsonian websites, and third-party sites on which it maintains a presence ("SI Websites") in support of its mission for the "increase and diffusion of knowledge." The Smithsonian invites visitors to use its online content for personal, educational and other non-commercial purposes. By using this website, you accept and agree to abide by the [following terms](#).

- If sharing the material in personal and educational contexts, please cite the Smithsonian Institution Archives as source of the content and the project title as provided at the top of the document. Include the accession number or collection name; when possible, link to the Smithsonian Institution Archives website.
- If you wish to use this material in a for-profit publication, exhibition, or online project, please contact Smithsonian Institution Archives or transcribe@si.edu

For more information on this project and related material, contact the Smithsonian Institution Archives. [See this project](#) and other collections in the Smithsonian Transcription Center.

2.)

ARKLOW TRIP June 2 - 16, 1926.

2/6/26. Sand dunes, Brittas Bay, S. of Mizen Head. Co. WI. A.W.S. aft.
Pompilus sp. ♀
gibbus?
Andrena sericea 2 ♂♂ & ♀♀, latter very fresh.
A. fucata ♂ in road inland of
Tenthredinidae ✓
Selandria ~~flavens~~ [?] ~~flavens~~
furstenbergensis ✓ RCLP. 2 ♀♀
symbols on bracken slope.
Ichneumonidae (all but my small ♀ taken in ditch) road
Braconid: Oenone hians } road inland
[image: arrow pointing at above phrase in brackets]

[line across page]

2/6/26 evening. Swept in glen by Webb's River, N. of Ferrybank, Arklow,
Co. WI. A.W.S.
Tenthredinidae Tenthredo arcuata 2 ♀♀
symbols
Strongylogaster lineatus ♀ in
bracken : 1st seen 1926.

Ichneumonidae & ?

✓

All labelled

Carlow District 2.6.26

[line across page]

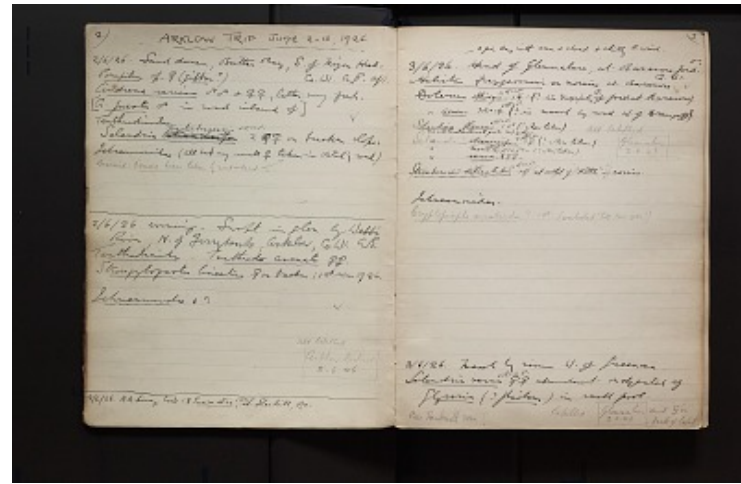
2/6/26. A.A. Lisney took 1 ♀ Euura atra
✓ R.C.L.P. at Shankill, Du.

[end page]

[start page]

(3.)

3/6/26. [insertion] a fine day with sun & cloud & chilly E. wind.
[insertion]
Head of Glenmalure, at Baramore Ford. &c.
Halictus freygessneri on moraine at
Baramore Co. WI. ✓
Dolerus oblongus ✓ RCLP. 1
♀ in marsh [insertion] ^ S. [insertion] of ford at
Baramore).
" [Ditto for: Dolerus] aeneus 3 ♂♂
symbol] 1 ♀ ✓ RCLP (? in marsh by road W.
of Drumgoff).
Selandria flavens ✓ RCLP. 1
♂ (whose taken) var with basal antennal joints not



yellow.

" [[Ditto for: Selandria]] stramincipe [[checkmark]] RCLP. 1 [[female symbol]] (? where taken)
" [[Ditto for: Selandria]] morio [[checkmark]] RCLP. 1 [[female symbol]]
[[checkmark]] RCLP. (? where taken)
" [[Ditto for: Selandria]] serva [[/underlined]]
~~3~~ ~~[[2 female symbols]]~~ -
Strombocerus delicatulus [[checkmark]]
RCLP. 1 [[female symbol]] at outlet of "Kettle" in morcine.

[[right margin]]
All labelled [[boxed]] [[Glenmalur?]] 3.6.26 [[/boxed]]
[[/right margin]]

Ichneumonidae
[[/underlined]] Cryptopimpla errabunda [[/underlined]] ? 1 [[male symbol]]
(overlooked till nov. 1932!)

3/6/26. Marsh by river W. of Greenan.
[[/underlined]] [[Solandria revra?]] [[/underlined]] [[checkmark]] R.C.L.P.
[[2 female symbols]] abundant on only petals of [[/underlined]] Glyceria
[[/underlined]] (? [[/underlined]] fluitans [[/underlined]]) in small pool.
Bee Hawkmoth seen!
[[right margin]]
labelled [[boxed]] Glenmalur 3.6.26 [[boxed]]
[[boxed]] and "G" on back of label. [[/boxed]]
[[/right margin]]

Arthur W. Stelfox - Vol. 2, daily lists
Transcribed and Reviewed by Digital Volunteers
Extracted Apr-23-2024 01:30:20



Smithsonian Institution

Smithsonian Institution Archives

The mission of the Smithsonian is the increase and diffusion of knowledge - shaping the future by preserving our heritage, discovering new knowledge, and sharing our resources with the world. Founded in 1846, the Smithsonian is the world's largest museum and research complex, consisting of 19 museums and galleries, the National Zoological Park, and nine research facilities. Become an active part of our mission through the Transcription Center. Together, we are discovering secrets hidden deep inside our collections that illuminate our history and our world.

Join us!

The Transcription Center: <https://transcription.si.edu>

On Facebook: <https://www.facebook.com/SmithsonianTranscriptionCenter>

On Twitter: [@TranscribeSI](https://twitter.com/TranscribeSI)

Connect with the Smithsonian

Smithsonian Institution: www.si.edu

On Facebook: <https://www.facebook.com/Smithsonian>

On Twitter: [@smithsonian](https://twitter.com/smithsonian)