



**Smithsonian Institution**

*Smithsonian Institution Archives*

## **Arthur W. Stelfox - Vol. 2, daily lists**

Extracted on Mar-28-2024 12:56:08

**The Smithsonian Institution thanks all digital volunteers that transcribed and reviewed this material. Your work enriches Smithsonian collections, making them available to anyone with an interest in using them.**

The Smithsonian Institution (the "Smithsonian") provides the content on this website ([transcription.si.edu](https://transcription.si.edu)), other Smithsonian websites, and third-party sites on which it maintains a presence ("SI Websites") in support of its mission for the "increase and diffusion of knowledge." The Smithsonian invites visitors to use its online content for personal, educational and other non-commercial purposes. By using this website, you accept and agree to abide by the [following terms](#).

- If sharing the material in personal and educational contexts, please cite the Smithsonian Institution Archives as source of the content and the project title as provided at the top of the document. Include the accession number or collection name; when possible, link to the Smithsonian Institution Archives website.
- If you wish to use this material in a for-profit publication, exhibition, or online project, please contact Smithsonian Institution Archives or [transcribe@si.edu](mailto:transcribe@si.edu)

For more information on this project and related material, contact the Smithsonian Institution Archives. [See this project](#) and other collections in the Smithsonian Transcription Center.

6.  
4/6/26. W. of Arklow cont.  
Ichneumonidae.

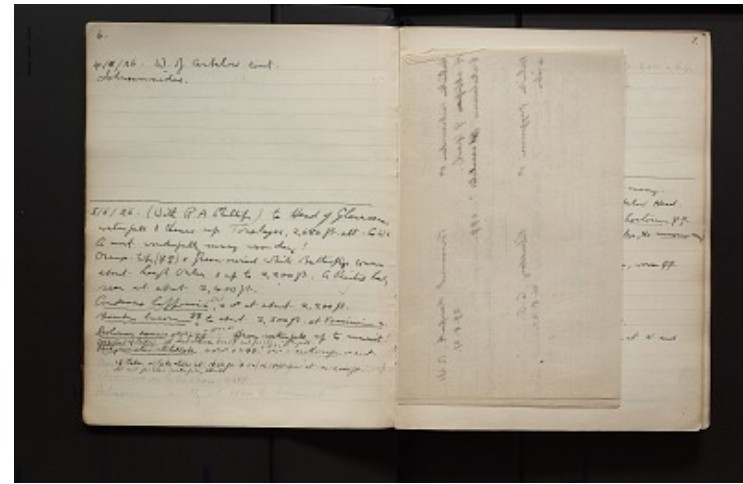
[[line across page]]

5/6/26. (With R.A. Phillips) to Head of Glenmacnas waterfall & thence up Tonelagee, 2,686 ft. alt. C.W.1.  
A most wonderfully sunny warm day!  
Orange-tip ([2 female symbols]) & Green-veined white Butterflies common about Lough Ouler & up to 2,200 ft. A Painted Lady seen at about 2,400 ft. [checkmark]  
[underlined] *Andrena lapponica* [underlined] [checkmark] RCLP. a [male symbol] at about 2,200 ft.  
[underlined] *Bombus lucorum* [underlined] [insertion] ^ [2 female symbols] [insertion] to about 2,500 ft. at [underlined] *Vaccinium m.* [underlined]  
[underlined] *Dolerus aenus* [underlined] [2 male symbols] & [2 female symbols] [checkmark] RCLP from water fall up to summit!  
[underlined] *Empria* [underlined] (cf. [underlined] *tridens* [underlined], with short antennae, RCLP.) not far above waterfall.  
[underlined] *Pachynematus clitellatus* [underlined] 4 [2 male symbols] & 2 [2 female symbols] [checkmark] RCLP. [2 male symbols] = [underlined] *xanthocarpus* [underlined] [male symbol] auct.  
1 [male symbol] taken on lake shore at 1868 ft & one on moraine at ca. 2,000 ft  
[2 male symbols] not far above waterfall, I think.  
Braconid on lake shore 1868 ft.  
Ichneumon mostly at 1500 to summit.

[[end page]]  
[[start page]]

7.

[[text obscured by folded notes]]



Arthur W. Stelfox - Vol. 2, daily lists  
Transcribed and Reviewed by Digital Volunteers  
Extracted Mar-28-2024 12:56:08



## Smithsonian Institution

*Smithsonian Institution Archives*

The mission of the Smithsonian is the increase and diffusion of knowledge - shaping the future by preserving our heritage, discovering new knowledge, and sharing our resources with the world. Founded in 1846, the Smithsonian is the world's largest museum and research complex, consisting of 19 museums and galleries, the National Zoological Park, and nine research facilities. Become an active part of our mission through the Transcription Center. Together, we are discovering secrets hidden deep inside our collections that illuminate our history and our world.

Join us!

The Transcription Center: <https://transcription.si.edu>

On Facebook: <https://www.facebook.com/SmithsonianTranscriptionCenter>

On Twitter: [@TranscribeSI](https://twitter.com/TranscribeSI)

Connect with the Smithsonian

Smithsonian Institution: [www.si.edu](http://www.si.edu)

On Facebook: <https://www.facebook.com/Smithsonian>

On Twitter: [@smithsonian](https://twitter.com/smithsonian)