



Smithsonian Institution

Smithsonian Institution Archives

Arthur W. Stelfox - Vol. 2, daily lists

Extracted on Apr-18-2024 06:32:04

The Smithsonian Institution thanks all digital volunteers that transcribed and reviewed this material. Your work enriches Smithsonian collections, making them available to anyone with an interest in using them.

The Smithsonian Institution (the "Smithsonian") provides the content on this website (transcription.si.edu), other Smithsonian websites, and third-party sites on which it maintains a presence ("SI Websites") in support of its mission for the "increase and diffusion of knowledge." The Smithsonian invites visitors to use its online content for personal, educational and other non-commercial purposes. By using this website, you accept and agree to abide by the [following terms](#).

- If sharing the material in personal and educational contexts, please cite the Smithsonian Institution Archives as source of the content and the project title as provided at the top of the document. Include the accession number or collection name; when possible, link to the Smithsonian Institution Archives website.
- If you wish to use this material in a for-profit publication, exhibition, or online project, please contact Smithsonian Institution Archives or transcribe@si.edu

For more information on this project and related material, contact the Smithsonian Institution Archives. [See this project](#) and other collections in the Smithsonian Transcription Center.

26)

27/6/26. A dull warm day : practically no sun.
Sandhills south of asylum at Portrane, Co. Du.
(Worked large hollows between sea & flat-topped house).
[[Colletes picistigma]] 1 fresh [[male symbol]]
on Leontodon.
[[Bombus lapidarius]] [[virgin female symbol]]
seen.
[[Tachyspex pectinipes]] [[2 male symbols]] &
[[2 female symbols]] common.
[[Astata stigma]] 2 [[2 female symbols]] with
last. [[NEW TO IRELAND]].
[[Pompilus gibbus]] [[2 male symbols]] & [[2
female symbols]].
" [[Ditto for: Pompilus]] [[rufipes]] 1 [[male
symbol]]
" [[Ditto for: Pompilus]] [[plumbeus]] [[2 male
symbols]]
[[Crabro wesmaeli]] [[2 male symbols]] & [[2
female symbols]].
" [[Ditto for: Crabro]] [[peltarius]] [[female
symbol]] seen at burrow.
[[Bethylus fuscicornis]] A.W.S.,
1 very small [[female symbol]].
[[Pemphredon lethifer]] 1 small [[female
symbol]] not seconded!
[[Dolerus picipes]] [[checkmark]] RCLP. 1
[[female symbol]] on beat grain.
[[Ichuenomidae]] &c
[[Chelorus]] sp.
Protichneumon sp.
[[checkmark]]

R.A.P. NG & SG see p. 66. from 1926

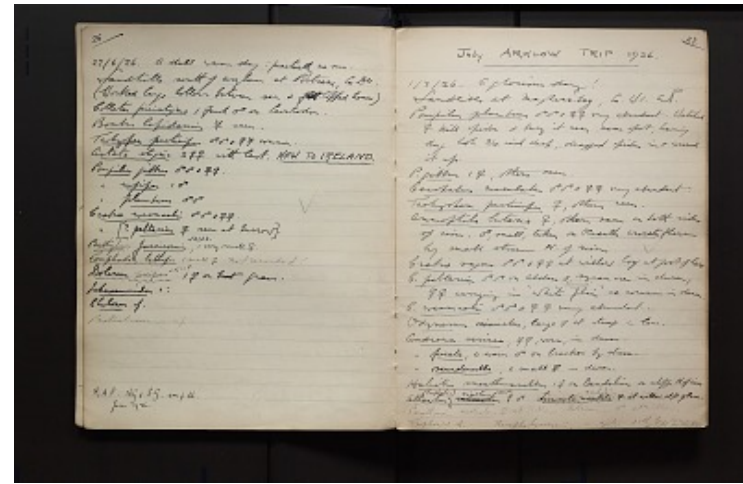
[[end page]]
[[start page]]

(27.

[[July ARKLOW TRIP 1926]]

1/7/26. A glorious day!
Sandhills at Magherabeg, Co. WI. AWS.
[[Pompilus plumbeus]] [[2 male symbol]] & [[2
female symbols]] very abundant. Watched [[female symbol]] kill spider &
bury it near same spot, having dug hole 3/4 inch deep, dragged spider in
& covered it up.

[[P. gibbus]] 1 [[female symbol]], others seen.
[[Ceropatus maculatus]] [[2 male symbols]] &
[[2 female symbols]] very abundant.
[[Tachyspex pectinipes]] [[female symbol]],
others seen.
[[Ammophila lutaria]] [[female symbol]], others
seen on both sides of river. [[male symbols]], small, taken on
[[Oenanthe crocata]] flowers by small stream



N. of river.
Crabro vagus & 2 female symbols at willow log at foot of lane
C. peltarius on Alders & sycamore in dunes, 2 male symbols carrying in "white flies"
 "Thereva" so common in dunes.
P. weamaeli & 2 female symbols very abundant.
Odynerus sinuatus, large female symbol at stump in lane.
Andrena sericea, 2 female symbols, worn, in dunes.
 " [[Ditto for: Andrena]] fucata, a worn male symbol on bracken by stream.
 " [[Ditto for: Andrena]] saundersella, a small female symbol in dunes.
Halictus smeathmanellus 1 female symbol on Dandelion on cliff N. of river
Allantus ^ (Emphytus)
~~calceatus~~ ~~cinctus~~
~~RCLP~~ ? ~~male symbol~~
Lissonota maculata female symbol at willow at ft. of lane.
Perithonus mediator female symbol at Willow. Ichneumon male symbol at willow.
Triphonid sp. Therapha hyarcyani? - [ajalin?] & other [Inj?] common on Emph. portlandia.

Arthur W. Stelfox - Vol. 2, daily lists
 Transcribed and Reviewed by Digital Volunteers
 Extracted Apr-18-2024 06:32:04



Smithsonian Institution

Smithsonian Institution Archives

The mission of the Smithsonian is the increase and diffusion of knowledge - shaping the future by preserving our heritage, discovering new knowledge, and sharing our resources with the world. Founded in 1846, the Smithsonian is the world's largest museum and research complex, consisting of 19 museums and galleries, the National Zoological Park, and nine research facilities. Become an active part of our mission through the Transcription Center. Together, we are discovering secrets hidden deep inside our collections that illuminate our history and our world.

Join us!

The Transcription Center: <https://transcription.si.edu>

On Facebook: <https://www.facebook.com/SmithsonianTranscriptionCenter>

On Twitter: [@TranscribeSI](https://twitter.com/TranscribeSI)

Connect with the Smithsonian

Smithsonian Institution: www.si.edu

On Facebook: <https://www.facebook.com/Smithsonian>

On Twitter: [@smithsonian](https://twitter.com/smithsonian)