



Smithsonian Institution

Smithsonian Institution Archives

Waldo L. Schmitt - Report on the USBF Halibut Survey, 1914

Extracted on Apr-17-2024 11:07:05

The Smithsonian Institution thanks all digital volunteers that transcribed and reviewed this material. Your work enriches Smithsonian collections, making them available to anyone with an interest in using them.

The Smithsonian Institution (the "Smithsonian") provides the content on this website (transcription.si.edu), other Smithsonian websites, and third-party sites on which it maintains a presence ("SI Websites") in support of its mission for the "increase and diffusion of knowledge." The Smithsonian invites visitors to use its online content for personal, educational and other non-commercial purposes. By using this website, you accept and agree to abide by the [following terms](#).

- If sharing the material in personal and educational contexts, please cite the Smithsonian Institution Archives as source of the content and the project title as provided at the top of the document. Include the accession number or collection name; when possible, link to the Smithsonian Institution Archives website.
- If you wish to use this material in a for-profit publication, exhibition, or online project, please contact Smithsonian Institution Archives or transcribe@si.edu

For more information on this project and related material, contact the Smithsonian Institution Archives. [See this project](#) and other collections in the Smithsonian Transcription Center.

2 ^[[5.]]

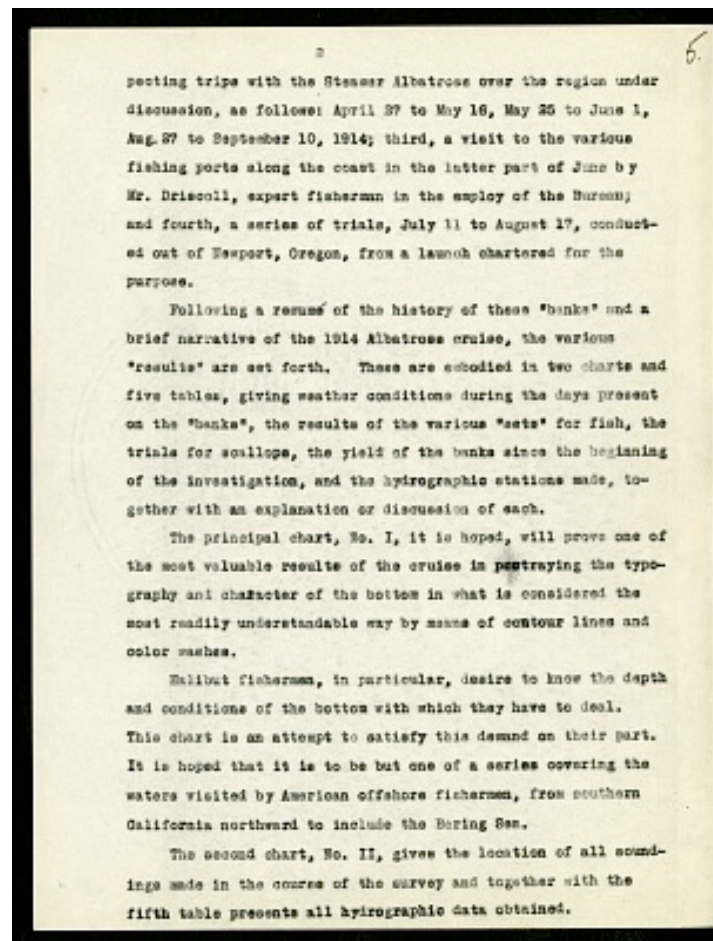
pecting trips with the Steamer Albatross over the region under discussion, as follows: April 27 to May 16, May 25 to June 1, Aug. 27 to September 10, 1914; third, a visit to the various fishing ports along the coast in the latter part of June by Mr. Driscoll, expert fisherman in the employ of the Bureau; and fourth, a series of trials, July 11 to August 17, conducted out of Newport, Oregon, from a launch chartered for the purpose.

Following a resumé of the history of these "banks" and a brief narrative of the 1914 Albatross cruise, the various "results" are set forth. These are embodied in two charts and five tables, giving weather conditions during the days present on the "banks", the results of the various "sets" for fish, the trials for scallops, the yield of the banks since the beginning of the investigation, and the hydrographic stations made, together with an explanation or discussion of each.

The principal chart, No. I, it is hoped, will prove one of the most valuable results of the cruise in portraying the topography and character of the bottom in what is considered the most readily understandable way by means of contour lines and color washes.

Halibut fishermen, in particular, desire to know the depth and conditions of the bottom with which they have to deal. This chart is an attempt to satisfy this demand on their part. It is hoped that it is to be but one of a series covering the waters visited by American offshore fishermen, from southern California northward to include the Bering Sea.

The second chart, No. II, gives the location of all soundings made in the course of the survey and together with the fifth table presents all hydrographic data obtained.



Waldo L. Schmitt - Report on the USBF Halibut Survey, 1914
Transcribed and Reviewed by Digital Volunteers
Extracted Apr-17-2024 11:07:05



Smithsonian Institution

Smithsonian Institution Archives

The mission of the Smithsonian is the increase and diffusion of knowledge - shaping the future by preserving our heritage, discovering new knowledge, and sharing our resources with the world. Founded in 1846, the Smithsonian is the world's largest museum and research complex, consisting of 19 museums and galleries, the National Zoological Park, and nine research facilities. Become an active part of our mission through the Transcription Center. Together, we are discovering secrets hidden deep inside our collections that illuminate our history and our world.

Join us!

The Transcription Center: <https://transcription.si.edu>

On Facebook: <https://www.facebook.com/SmithsonianTranscriptionCenter>

On Twitter: [@TranscribeSI](https://twitter.com/TranscribeSI)

Connect with the Smithsonian

Smithsonian Institution: www.si.edu

On Facebook: <https://www.facebook.com/Smithsonian>

On Twitter: [@smithsonian](https://twitter.com/smithsonian)