



Smithsonian Institution

Smithsonian Institution Archives

Waldo L. Schmitt - Report on the USBF Halibut Survey, 1914

Extracted on Apr-20-2024 09:38:04

The Smithsonian Institution thanks all digital volunteers that transcribed and reviewed this material. Your work enriches Smithsonian collections, making them available to anyone with an interest in using them.

The Smithsonian Institution (the "Smithsonian") provides the content on this website (transcription.si.edu), other Smithsonian websites, and third-party sites on which it maintains a presence ("SI Websites") in support of its mission for the "increase and diffusion of knowledge." The Smithsonian invites visitors to use its online content for personal, educational and other non-commercial purposes. By using this website, you accept and agree to abide by the [following terms](#).

- If sharing the material in personal and educational contexts, please cite the Smithsonian Institution Archives as source of the content and the project title as provided at the top of the document. Include the accession number or collection name; when possible, link to the Smithsonian Institution Archives website.
- If you wish to use this material in a for-profit publication, exhibition, or online project, please contact Smithsonian Institution Archives or transcribe@si.edu

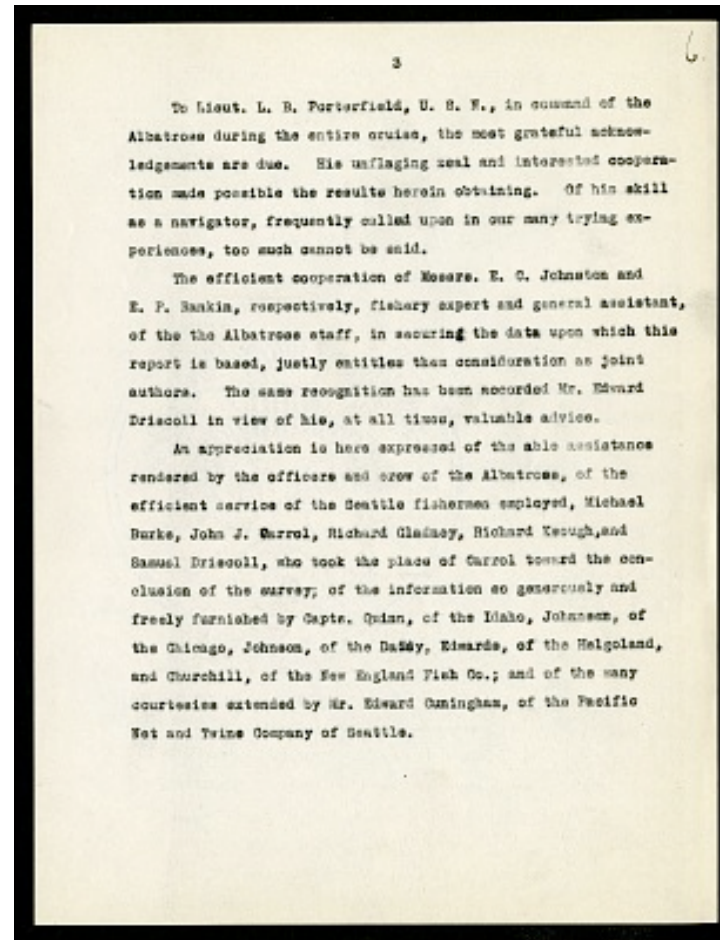
For more information on this project and related material, contact the Smithsonian Institution Archives. [See this project](#) and other collections in the Smithsonian Transcription Center.

3 ^[[6.]]

To Lieut. L.B. Porterfield, U.S.N., in command of the Albatross during the entire cruise, the most grateful acknowledgements are due. His unflinching zeal and interested cooperation made possible the results herein obtaining. Of his skill as a navigator, frequently called upon in our many trying experiences, too much cannot be said.

The efficient cooperation of Messrs. E.C. Johnston and E.P. Rankin, respectively, fishery expert and general assistant, of the the Albatross staff, in securing the data upon which this report is based, justly entitles them consideration as joint authors. The same recognition has been accorded Mr. Edward Driscoll in view of his, at all times, valuable advice.

An appreciation is here expressed of the able assistance rendered by the officers and crew of the Albatross, of the efficient service of the Seattle fishermen employed, Michael Burke, John J. Carrol, Richard Gladney, Richard Keough, and Samuel Driscoll, who took the place of Carrol toward the conclusion of the survey; of the information so generously and freely furnished by Capts. Quinn, of the Idaho, Johansen, of the Chicago, Johnson, of the Daisy, Edwards, of the Helgoland, and Churchill, of the New England Fish Co.; and of the many courtesies extended by Mr. Edward Cunningham, of the Pacific Net and Twine Company of Seattle.



Waldo L. Schmitt - Report on the USBF Halibut Survey, 1914
Transcribed and Reviewed by Digital Volunteers
Extracted Apr-20-2024 09:38:04



Smithsonian Institution

Smithsonian Institution Archives

The mission of the Smithsonian is the increase and diffusion of knowledge - shaping the future by preserving our heritage, discovering new knowledge, and sharing our resources with the world. Founded in 1846, the Smithsonian is the world's largest museum and research complex, consisting of 19 museums and galleries, the National Zoological Park, and nine research facilities. Become an active part of our mission through the Transcription Center. Together, we are discovering secrets hidden deep inside our collections that illuminate our history and our world.

Join us!

The Transcription Center: <https://transcription.si.edu>

On Facebook: <https://www.facebook.com/SmithsonianTranscriptionCenter>

On Twitter: [@TranscribeSI](https://twitter.com/TranscribeSI)

Connect with the Smithsonian

Smithsonian Institution: www.si.edu

On Facebook: <https://www.facebook.com/Smithsonian>

On Twitter: [@smithsonian](https://twitter.com/smithsonian)