



**Smithsonian Institution**

*National Museum of the American Indian Archives Center*

## **Museum of the American Indian, Heye Foundation - Annual Reports, 1931-1934**

Extracted on Dec-05-2021 09:58:57

**The Smithsonian Institution thanks all digital volunteers that transcribed and reviewed this material. Your work enriches Smithsonian collections, making them available to anyone with an interest in using them.**

The Smithsonian Institution (the "Smithsonian") provides the content on this website ([transcription.si.edu](https://transcription.si.edu)), other Smithsonian websites, and third-party sites on which it maintains a presence ("SI Websites") in support of its mission for the "increase and diffusion of knowledge." The Smithsonian invites visitors to use its online content for personal, educational and other non-commercial purposes. By using this website, you accept and agree to abide by the [following terms](#).

- If sharing the material in personal and educational contexts, please cite the National Museum of the American Indian Archives Center as source of the content and the project title as provided at the top of the document. Include the accession number or collection name; when possible, link to the National Museum of the American Indian Archives Center website.
- If you wish to use this material in a for-profit publication, exhibition, or online project, please contact National Museum of the American Indian Archives Center or [transcribe@si.edu](mailto:transcribe@si.edu)

For more information on this project and related material, contact the National Museum of the American Indian Archives Center. [See this project](#) and other collections in the Smithsonian Transcription Center.

7.

Newfoundland. Through the generosity of Mrs. Thea Heye an expedition was conducted amongst the Micmac of Conne River under the able leadership of Frederick Johnson.

Venezuela. Dr. H. S. Dickey made another trip to the Upper Orinoco and obtained specimens from the Guaharibo Indians.

#### COLLECTIONS PRESENTED

A small but very valuable collection of ethnology, collected by the late Colonel John T. Pickett, about 1850, from the Comanche Indians of Oklahoma was presented through the generosity of Mr. Philip Sawyer.

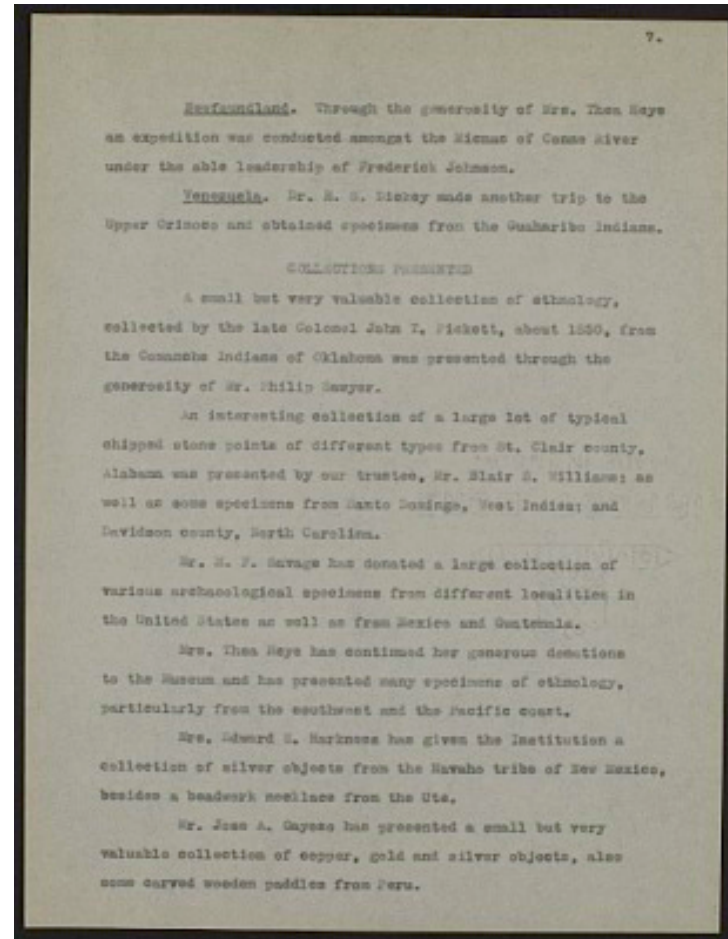
An interesting collection of a large lot of typical chipped stone points of different type from St. Clair county, Alabama was presented by our trustee, Mr. Blair S. Williams; as well as some specimens from Santo Domingo, West Indies; and Davidson county, North Carolina.

Mr. M. F. Savage has donated a large collection of various archaeological specimens from different localities in the United States as well as from Mexico and Guatemala.

Mrs. Thea Heye has continued her generous donations to the Museum and has presented many specimens of ethnology, particularly from the southwest and the Pacific coast.

Mrs. Edward S. Harkness has given the Institution a collection of silver objects from the Navaho tribe of New Mexico, besides a beadwork necklace from the Ute.

Mr. Jose A. Cayoso has presented a small but very valuable collection of copper, gold and silver objects, also some carved wooden paddles from Peru.



Museum of the American Indian, Heye Foundation - Annual Reports, 1931-1934

Transcribed and Reviewed by Digital Volunteers

Extracted Dec-05-2021 09:58:57



## Smithsonian Institution

*National Museum of the American Indian Archives Center*

The mission of the Smithsonian is the increase and diffusion of knowledge - shaping the future by preserving our heritage, discovering new knowledge, and sharing our resources with the world. Founded in 1846, the Smithsonian is the world's largest museum and research complex, consisting of 19 museums and galleries, the National Zoological Park, and nine research facilities. Become an active part of our mission through the Transcription Center. Together, we are discovering secrets hidden deep inside our collections that illuminate our history and our world.

Join us!

The Transcription Center: <https://transcription.si.edu>

On Facebook: <https://www.facebook.com/SmithsonianTranscriptionCenter>

On Twitter: [@TranscribeSI](https://twitter.com/TranscribeSI)

Connect with the Smithsonian

Smithsonian Institution: [www.si.edu](http://www.si.edu)

On Facebook: <https://www.facebook.com/Smithsonian>

On Twitter: [@smithsonian](https://twitter.com/smithsonian)