



Smithsonian Institution

National Museum of the American Indian Archives Center

Museum of the American Indian, Heye Foundation - Annual Reports, 1931-1934

Extracted on Oct-16-2021 03:04:19

The Smithsonian Institution thanks all digital volunteers that transcribed and reviewed this material. Your work enriches Smithsonian collections, making them available to anyone with an interest in using them.

The Smithsonian Institution (the "Smithsonian") provides the content on this website (transcription.si.edu), other Smithsonian websites, and third-party sites on which it maintains a presence ("SI Websites") in support of its mission for the "increase and diffusion of knowledge." The Smithsonian invites visitors to use its online content for personal, educational and other non-commercial purposes. By using this website, you accept and agree to abide by the [following terms](#).

- If sharing the material in personal and educational contexts, please cite the National Museum of the American Indian Archives Center as source of the content and the project title as provided at the top of the document. Include the accession number or collection name; when possible, link to the National Museum of the American Indian Archives Center website.
- If you wish to use this material in a for-profit publication, exhibition, or online project, please contact National Museum of the American Indian Archives Center or transcribe@si.edu

For more information on this project and related material, contact the National Museum of the American Indian Archives Center. [See this project](#) and other collections in the Smithsonian Transcription Center.

8.

Miss Sarah Goldie has presented a small collection of southwestern pottery from the living tribes.

Mr. Harrison Brockbank has presented a collection of ethnological specimens from the Indians of the United States and Mexico.

COLLECTIONS ACQUIRED

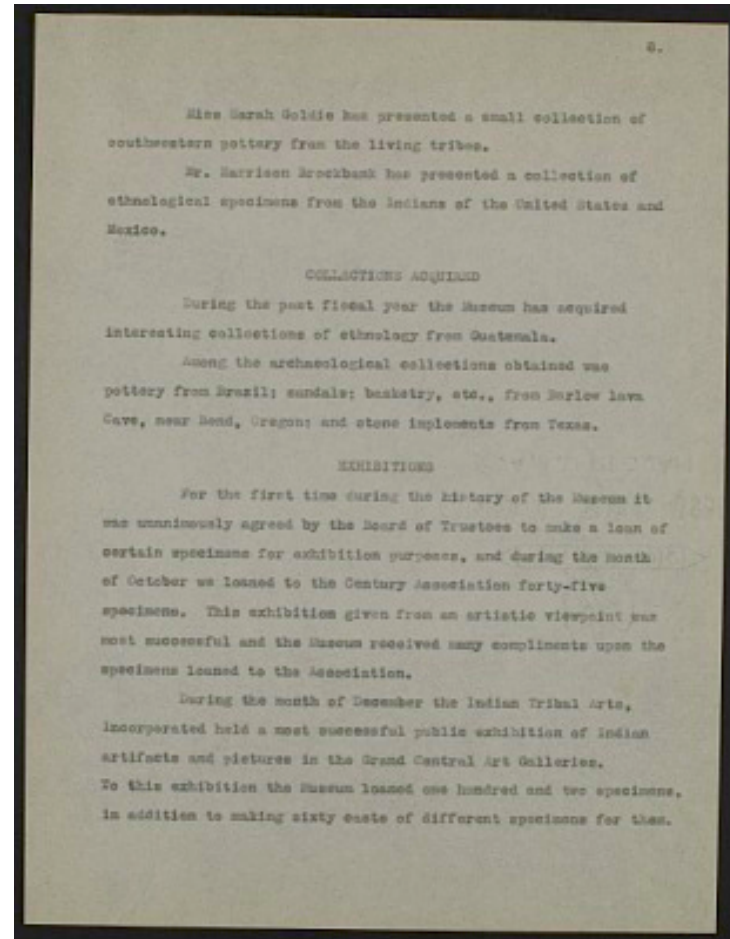
During the past fiscal year the Museum has acquired interesting collections of ethnology from Guatemala.

Among the archaeological collections obtained was pottery from Brazil; sandals; basketry, etc., from Barlow lava Cave, near Bend, Oregon; and stone implements from Texas.

EXHIBITIONS

For the first time during the history of the Museum it was unanimously agreed by the Board of Trustees to make a loan of certain specimens for exhibition purposes, and during the month of October we loaned to the Century Association forty-five specimens. This exhibition given from an artistic viewpoint was most successful and the Museum received many compliments upon the specimens loaned to the Association.

During the month of December the Indian Tribal Arts, incorporated held a most successful public exhibition of Indian artifacts and pictures in the Grand Central Art Galleries. To this exhibition the Museum loaned one hundred and two specimens, in addition to making sixty casts of different specimens for them.



Museum of the American Indian, Heye Foundation - Annual Reports, 1931-1934

Transcribed and Reviewed by Digital Volunteers
Extracted Oct-16-2021 03:04:19



Smithsonian Institution

National Museum of the American Indian Archives Center

The mission of the Smithsonian is the increase and diffusion of knowledge - shaping the future by preserving our heritage, discovering new knowledge, and sharing our resources with the world. Founded in 1846, the Smithsonian is the world's largest museum and research complex, consisting of 19 museums and galleries, the National Zoological Park, and nine research facilities. Become an active part of our mission through the Transcription Center. Together, we are discovering secrets hidden deep inside our collections that illuminate our history and our world.

Join us!

The Transcription Center: <https://transcription.si.edu>

On Facebook: <https://www.facebook.com/SmithsonianTranscriptionCenter>

On Twitter: [@TranscribeSI](https://twitter.com/TranscribeSI)

Connect with the Smithsonian

Smithsonian Institution: www.si.edu

On Facebook: <https://www.facebook.com/Smithsonian>

On Twitter: [@smithsonian](https://twitter.com/smithsonian)