



Smithsonian Institution

National Museum of the American Indian Archives Center

Museum of the American Indian, Heye Foundation - Annual Reports, 1931-1934

Extracted on Apr-18-2024 03:14:36

The Smithsonian Institution thanks all digital volunteers that transcribed and reviewed this material. Your work enriches Smithsonian collections, making them available to anyone with an interest in using them.

The Smithsonian Institution (the "Smithsonian") provides the content on this website (transcription.si.edu), other Smithsonian websites, and third-party sites on which it maintains a presence ("SI Websites") in support of its mission for the "increase and diffusion of knowledge." The Smithsonian invites visitors to use its online content for personal, educational and other non-commercial purposes. By using this website, you accept and agree to abide by the [following terms](#).

- If sharing the material in personal and educational contexts, please cite the National Museum of the American Indian Archives Center as source of the content and the project title as provided at the top of the document. Include the accession number or collection name; when possible, link to the National Museum of the American Indian Archives Center website.
- If you wish to use this material in a for-profit publication, exhibition, or online project, please contact National Museum of the American Indian Archives Center or transcribe@si.edu

For more information on this project and related material, contact the National Museum of the American Indian Archives Center. [See this project](#) and other collections in the Smithsonian Transcription Center.

10.

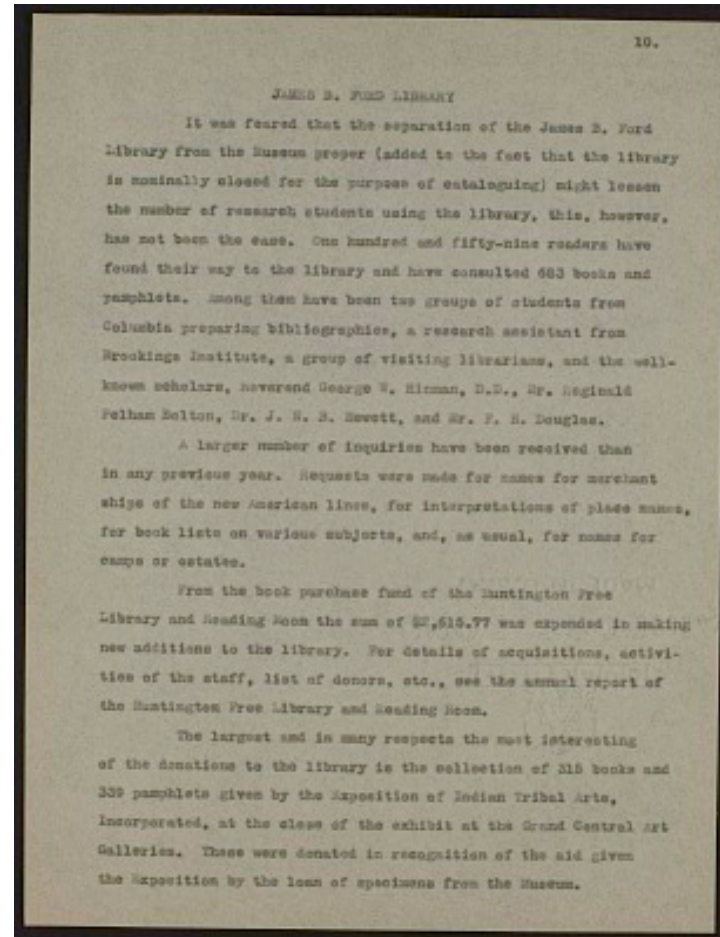
JAMES B. FORD LIBRARY

It was feared that the separation of the James B. Ford Library from the Museum proper (added to the fact that the library is nominally closed for the purpose of cataloguing) might lessen the number of research students using the library, this, however, has not been the case. One hundred and fifty-nine readers have found their way to the library and have consulted 683 books and pamphlets. Among them have been two groups of students from Columbia preparing bibliographies, a research assistant from Brookings Institute, a group of visiting librarians, and the well-known scholars, Reverend George W. Hinman, D. D., Mr. Reginald Pelham Bolton, Dr. J. N. B. Hewett, and Mr. F. H. Douglas.

A large number of inquiries have been received than in any previous year. Requests were made for names for merchant ships of the new American lines, for interpretations of place names, on various subjects, and as usual, for names for camps or estates.

From the book purchase fund of the Huntington Free Library and Reading Room the sum of \$2,515.77 was expended in making new additions to the library. For details of acquisitions, activities of the staff, list of donors, etc., see the annual report of the Huntington Free Library and Reading Room.

The largest and in many respects the most interesting of the donations to the library is the collection of 315 books and 339 pamphlets given by the Exposition of Indian Tribal Arts, Incorporated, at the close of the exhibit at the Grand Central Arts Galleries. These were donated in recognition of the aid given the Exposition by the loan of the specimens from the Museum.



Museum of the American Indian, Heye Foundation - Annual Reports, 1931-1934

Transcribed and Reviewed by Digital Volunteers

Extracted Apr-18-2024 03:14:36



Smithsonian Institution

National Museum of the American Indian Archives Center

The mission of the Smithsonian is the increase and diffusion of knowledge - shaping the future by preserving our heritage, discovering new knowledge, and sharing our resources with the world. Founded in 1846, the Smithsonian is the world's largest museum and research complex, consisting of 19 museums and galleries, the National Zoological Park, and nine research facilities. Become an active part of our mission through the Transcription Center. Together, we are discovering secrets hidden deep inside our collections that illuminate our history and our world.

Join us!

The Transcription Center: <https://transcription.si.edu>

On Facebook: <https://www.facebook.com/SmithsonianTranscriptionCenter>

On Twitter: [@TranscribeSI](https://twitter.com/TranscribeSI)

Connect with the Smithsonian

Smithsonian Institution: www.si.edu

On Facebook: <https://www.facebook.com/Smithsonian>

On Twitter: [@smithsonian](https://twitter.com/smithsonian)