



Smithsonian Institution

National Museum of the American Indian Archives Center

Museum of the American Indian, Heye Foundation - Annual Reports, 1931-1934

Extracted on Mar-28-2024 07:08:08

The Smithsonian Institution thanks all digital volunteers that transcribed and reviewed this material. Your work enriches Smithsonian collections, making them available to anyone with an interest in using them.

The Smithsonian Institution (the "Smithsonian") provides the content on this website (transcription.si.edu), other Smithsonian websites, and third-party sites on which it maintains a presence ("SI Websites") in support of its mission for the "increase and diffusion of knowledge." The Smithsonian invites visitors to use its online content for personal, educational and other non-commercial purposes. By using this website, you accept and agree to abide by the [following terms](#).

- If sharing the material in personal and educational contexts, please cite the National Museum of the American Indian Archives Center as source of the content and the project title as provided at the top of the document. Include the accession number or collection name; when possible, link to the National Museum of the American Indian Archives Center website.
- If you wish to use this material in a for-profit publication, exhibition, or online project, please contact National Museum of the American Indian Archives Center or transcribe@si.edu

For more information on this project and related material, contact the National Museum of the American Indian Archives Center. [See this project](#) and other collections in the Smithsonian Transcription Center.

14.

SIZE OF COLLECTIONS

There have been added to the collections during the past fiscal year 2,943 specimens; and there are now in the entire collection catalogue entries running consecutively to 182,109, an increase during the year of 1,347.

DEPARTMENT OF PHYSICAL ANTHROPOLOGY

The routine procedures in the Physical Anthropological Department have been carried on as usual during the past year, under the direction of Dr. Bruno Oettking, who although not receiving any salary from the Museum, still continues work in his department.

Visitors to the Department at the Annex were:

Dr. Herbert U. Williams, Professor of Pathology in the University of Buffalo, New York

Mr. Leslie A. Case, Superintendent of Schools in Westchester County, New York

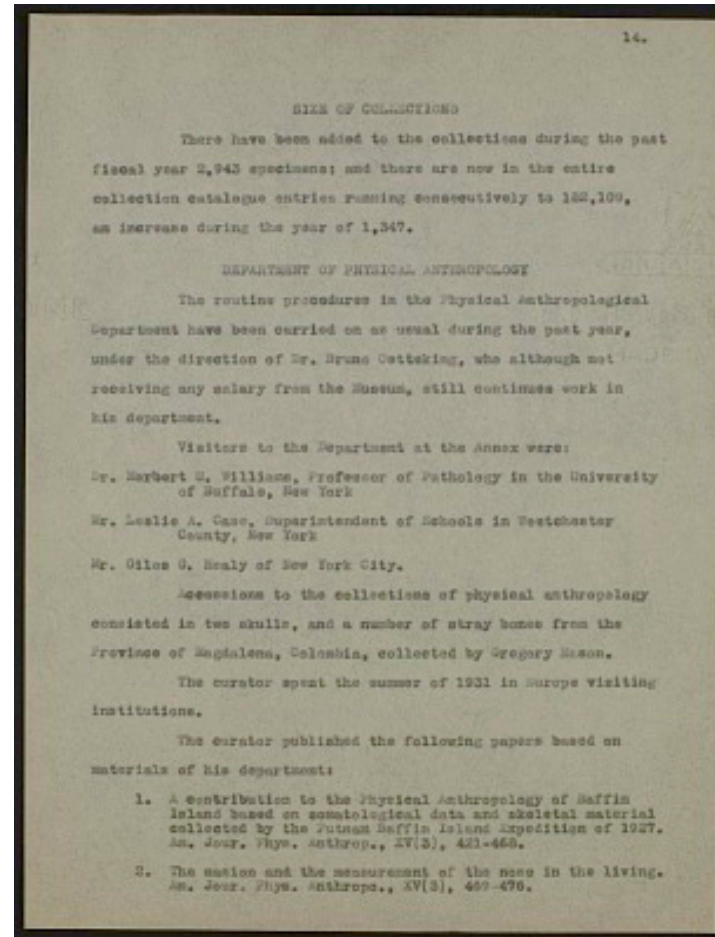
Mr. Giles G. Healy of New York City.

Accessions to the collection of physical anthropology consisted in two skulls, and a number of stray bones from the Province of Magdalena, Colombia, collected by Gregory Mason.

The curator spent the summer of 1931 in Europe visiting institutions.

The curator published the following papers based on materials of his department:

1. A contribution to the Physical Anthropology of Baffin Island based on somatological data and skeletal material collected by the Putnam Baffin Island Expedition of 1927. Am. Jour. Phys. Anthropol., XV(3), 421-468.
2. The nasion and the measurement of the nose in the living. Am. Jour. Phys. Anthropol., XV(3), 469-476



Museum of the American Indian, Heye Foundation - Annual Reports, 1931-1934
Transcribed and Reviewed by Digital Volunteers
Extracted Mar-28-2024 07:08:08



Smithsonian Institution

National Museum of the American Indian Archives Center

The mission of the Smithsonian is the increase and diffusion of knowledge - shaping the future by preserving our heritage, discovering new knowledge, and sharing our resources with the world. Founded in 1846, the Smithsonian is the world's largest museum and research complex, consisting of 19 museums and galleries, the National Zoological Park, and nine research facilities. Become an active part of our mission through the Transcription Center. Together, we are discovering secrets hidden deep inside our collections that illuminate our history and our world.

Join us!

The Transcription Center: <https://transcription.si.edu>

On Facebook: <https://www.facebook.com/SmithsonianTranscriptionCenter>

On Twitter: [@TranscribeSI](https://twitter.com/TranscribeSI)

Connect with the Smithsonian

Smithsonian Institution: www.si.edu

On Facebook: <https://www.facebook.com/Smithsonian>

On Twitter: [@smithsonian](https://twitter.com/smithsonian)