



**Smithsonian Institution**

*Archives of American Art*

## **Lucy Lippard form letter inviting artists to participate in the 955,000 exhibition**

Extracted on Apr-19-2024 12:21:32

**The Smithsonian Institution thanks all digital volunteers that transcribed and reviewed this material. Your work enriches Smithsonian collections, making them available to anyone with an interest in using them.**

The Smithsonian Institution (the "Smithsonian") provides the content on this website ([transcription.si.edu](https://transcription.si.edu)), other Smithsonian websites, and third-party sites on which it maintains a presence ("SI Websites") in support of its mission for the "increase and diffusion of knowledge." The Smithsonian invites visitors to use its online content for personal, educational and other non-commercial purposes. By using this website, you accept and agree to abide by the [following terms](#).

- If sharing the material in personal and educational contexts, please cite the Archives of American Art as source of the content and the project title as provided at the top of the document. Include the accession number or collection name; when possible, link to the Archives of American Art website.
- If you wish to use this material in a for-profit publication, exhibition, or online project, please contact Archives of American Art or [transcribe@si.edu](mailto:transcribe@si.edu)

For more information on this project and related material, contact the Archives of American Art. [See this project](#) and other collections in the Smithsonian Transcription Center.

March 14, 1969  
138 Prince St.  
New York City 10012  
^[[Phone 212 966-2994]]

Dear

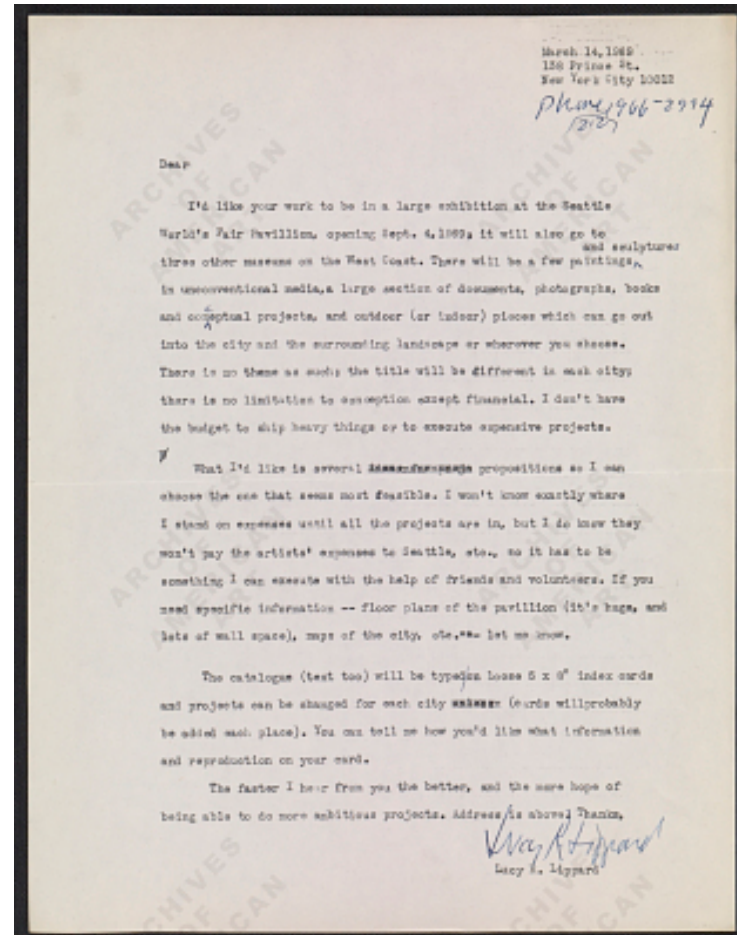
I'd like your work to be in a large exhibition at the Seattle World's Fair Pavillion, opening Sept. 4, 1969, it will also go to three other museums on the West Coast. There will be a few paintings ^ [[and sculptures]] in unconventional media, a large section of documents, photographs, books and conceptual projects, and outdoor (or indoor) pieces which can go out into the city and the surrounding landscape or wherever you choose. There is no theme as such; the title will be different in each city; there is no limitation to conception except financial. I don't have the budget to ship heavy things or to execute expensive projects.

What I'd like is several ~~[[striketrough]]~~ ~~[[?]]~~ ~~[[/striketrough]]~~ propositions so I can choose the one that seems most feasible. I won't know exactly where I stand on expenses until all the projects are in, but I do know they won't pay the artists' expenses to Seattle, etc., so it has to be something I can execute with the help of friends and volunteers. If you need specific information -- floor plans of the pavillion (it's huge, and lots of wall space), maps of the city, etc.\*\* let me know.

The catalogue (text too) will be typed on loose 5 x 8" index cards and projects can be changed for each city ~~[[striketrough]]~~ unless ~~[[/striketrough]]~~ (cards will probably be added each place). You can tell me how you'd like what information and reproduction on your card.

The faster I hear from you the better, and the more hope of being able to do more ambitious projects. Address is above. Thanks,

^[[signature: Lucy R. Lippard]]  
Lucy R. Lippard



Lucy Lippard form letter inviting artists to participate in the 955,000 exhibition  
Transcribed and Reviewed by Digital Volunteers  
Extracted Apr-19-2024 12:21:32



## Smithsonian Institution

*Archives of American Art*

The mission of the Smithsonian is the increase and diffusion of knowledge - shaping the future by preserving our heritage, discovering new knowledge, and sharing our resources with the world. Founded in 1846, the Smithsonian is the world's largest museum and research complex, consisting of 19 museums and galleries, the National Zoological Park, and nine research facilities. Become an active part of our mission through the Transcription Center. Together, we are discovering secrets hidden deep inside our collections that illuminate our history and our world.

Join us!

The Transcription Center: <https://transcription.si.edu>

On Facebook: <https://www.facebook.com/SmithsonianTranscriptionCenter>

On Twitter: [@TranscribeSI](https://twitter.com/TranscribeSI)

Connect with the Smithsonian

Smithsonian Institution: [www.si.edu](http://www.si.edu)

On Facebook: <https://www.facebook.com/Smithsonian>

On Twitter: [@smithsonian](https://twitter.com/smithsonian)