



Smithsonian Institution

National Museum of African American History and Culture

Playbill for Ma Rainey's Black Bottom

Extracted on Apr-24-2024 06:07:54

The Smithsonian Institution thanks all digital volunteers that transcribed and reviewed this material. Your work enriches Smithsonian collections, making them available to anyone with an interest in using them.

The Smithsonian Institution (the "Smithsonian") provides the content on this website (transcription.si.edu), other Smithsonian websites, and third-party sites on which it maintains a presence ("SI Websites") in support of its mission for the "increase and diffusion of knowledge." The Smithsonian invites visitors to use its online content for personal, educational and other non-commercial purposes. By using this website, you accept and agree to abide by the [following terms](#).

- If sharing the material in personal and educational contexts, please cite the National Museum of African American History and Culture as source of the content and the project title as provided at the top of the document. Include the accession number or collection name; when possible, link to the National Museum of African American History and Culture website.
- If you wish to use this material in a for-profit publication, exhibition, or online project, please contact National Museum of African American History and Culture or transcribe@si.edu

For more information on this project and related material, contact the National Museum of African American History and Culture. [See this project](#) and other collections in the Smithsonian Transcription Center.

[[advertisement]]

Marlboro Country.

[[image - color photograph of man riding a horse while lassoing; two packs of Marlboro cigarettes]]

Famous Marlboro Red and Marlboro Lights - either way you get a lot to like.

Lights: 11 mg "tar," 0.7 mg nicotine - Kings: 17 mg "tar," 1.1 mg nicotine av. per cigarette, FTC Report Mar.'84

Warning: The Surgeon General Has Determined That Cigarette Smoking Is Dangerous to Your Health

[[/advertisement]]

[[end page]]

[[start page]]

OPENING NIGHT, OCTOBER 11, 1984

[[double line]]

CORT THEATRE

]]logo]]A Shubert Organization Theatre

Gerald Schoenfeld, Chairman

Bernard B. Jacobs, President

Ivan Bloch Robert Cole Frederick M. Zollo

present

The Yale Repertory Theatre production of

Ma Rainey's Black Bottom

by August Wilson

Starring

Charles S. Dutton Leonard Jackson Robert Judd Joe Seneca

Lou Criscuolo John Carpenter Aleta Mitchell Scott Davenport-Richards

Christopher Loomis

and

Theresa Merritt

Costumes by Daphne Pascucci

Setting by Charles Henry McClennahan

Lighting by Peter Maradudin

Music Direction by Dwight Andrews

Sound by Jan Nebozenko

Casting byeg Simon/Fran Kumin

General Management Kingwill & Goossen

Production Stage Manager Mortimer Halpern

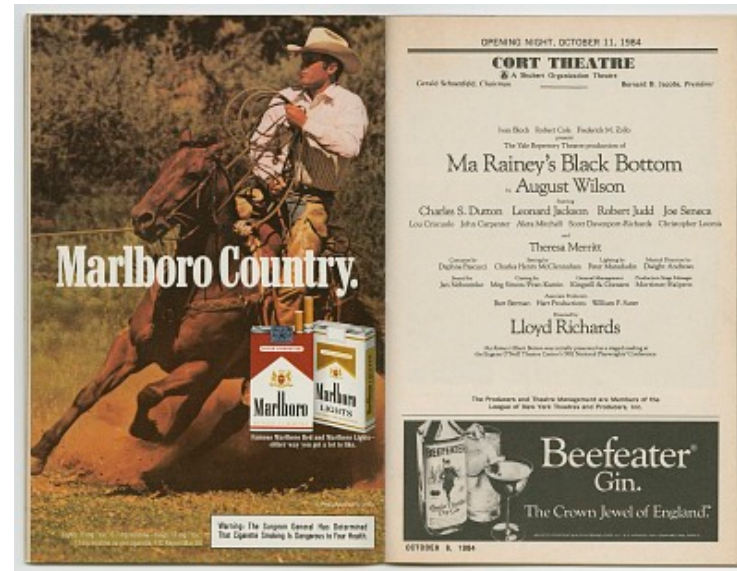
Associate Producers Bart Berman Hart Productions William P. Suter

Directed by Lloyd Richards

Ma Rainey's Black Bottom was initially presented as a staged reading at the Eugene O'Neill Theatre Center's 1982 National Playwrights' Conference.

The Producers and Theatre Management are Members of the League of New York Theatres and Producers, Inc.

[[line]]



[[advertisement]]

[[image - black & white photograph of a bottle of Beefeater Gin, a glass full of ice and Gin, and a filled martini glass with olive]]

Beefeater Gin.

The Crown Jewel of England. [[Trademark symbol]]

IMPORTED FROM ENGLAND BY KOBRAND CORP. N.Y., N.Y. 94

PROOF. 100% GRAIN NEUTRAL SPIRITS.

OCTOBER 8, 1984

Playbill for Ma Rainey's Black Bottom
Transcribed and Reviewed by Digital Volunteers
Extracted Apr-24-2024 06:07:54



Smithsonian Institution

National Museum of African American History and Culture

The mission of the Smithsonian is the increase and diffusion of knowledge - shaping the future by preserving our heritage, discovering new knowledge, and sharing our resources with the world. Founded in 1846, the Smithsonian is the world's largest museum and research complex, consisting of 19 museums and galleries, the National Zoological Park, and nine research facilities. Become an active part of our mission through the Transcription Center. Together, we are discovering secrets hidden deep inside our collections that illuminate our history and our world.

Join us!

The Transcription Center: <https://transcription.si.edu>

On Facebook: <https://www.facebook.com/SmithsonianTranscriptionCenter>

On Twitter: [@TranscribeSI](https://twitter.com/TranscribeSI)

Connect with the Smithsonian

Smithsonian Institution: www.si.edu

On Facebook: <https://www.facebook.com/Smithsonian>

On Twitter: [@smithsonian](https://twitter.com/smithsonian)