



Smithsonian Institution

National Museum of the American Indian Archives Center

Museum of the American Indian, Heye Foundation - Annual Reports, 1938-1941

Extracted on Apr-18-2024 09:58:52

The Smithsonian Institution thanks all digital volunteers that transcribed and reviewed this material. Your work enriches Smithsonian collections, making them available to anyone with an interest in using them.

The Smithsonian Institution (the "Smithsonian") provides the content on this website (transcription.si.edu), other Smithsonian websites, and third-party sites on which it maintains a presence ("SI Websites") in support of its mission for the "increase and diffusion of knowledge." The Smithsonian invites visitors to use its online content for personal, educational and other non-commercial purposes. By using this website, you accept and agree to abide by the [following terms](#).

- If sharing the material in personal and educational contexts, please cite the National Museum of the American Indian Archives Center as source of the content and the project title as provided at the top of the document. Include the accession number or collection name; when possible, link to the National Museum of the American Indian Archives Center website.
- If you wish to use this material in a for-profit publication, exhibition, or online project, please contact National Museum of the American Indian Archives Center or transcribe@si.edu

For more information on this project and related material, contact the National Museum of the American Indian Archives Center. [See this project](#) and other collections in the Smithsonian Transcription Center.

For previous fiscal year the attendance was...26,840.
 Total since opening of the Museum...652,210
 180 Special groups of schools, clubs, etc. visited the Museum through the year.

The Museum remains open to the public from 2:00 P.M. to 5:00 P.M. on week days, and was closed during the months of July and August.

MUSEUM BUILDING

The Museum Building has been maintained in the usual manner during the past year, including painting of the offices on the first floor.

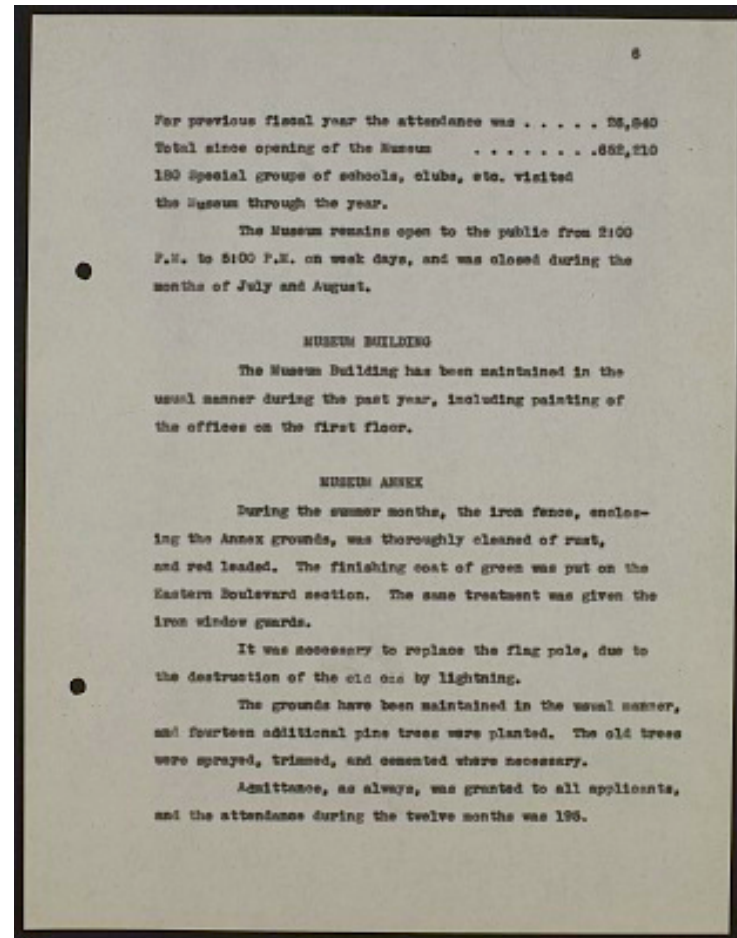
MUSEUM ANNEX

During the summer months, the iron fence, enclosing the Annex grounds, was thoroughly cleaned of rust, and red leaded. The finishing coat of green was put on the Eastern Boulevard section. The same treatment was given the iron window guards.

It was necessary to replace the flag pole, due to the destruction of the old one by lightning.

The grounds have been maintained in the usual manner, and fourteen additional pine trees were planted. The old trees were sprayed, trimmed, and cemented where necessary.

Admittance, as always, was granted to all applicants, and the attendance during the twelve months was 195.



Museum of the American Indian, Heye Foundation - Annual Reports, 1938-1941

Transcribed and Reviewed by Digital Volunteers
 Extracted Apr-18-2024 09:58:52



Smithsonian Institution

National Museum of the American Indian Archives Center

The mission of the Smithsonian is the increase and diffusion of knowledge - shaping the future by preserving our heritage, discovering new knowledge, and sharing our resources with the world. Founded in 1846, the Smithsonian is the world's largest museum and research complex, consisting of 19 museums and galleries, the National Zoological Park, and nine research facilities. Become an active part of our mission through the Transcription Center. Together, we are discovering secrets hidden deep inside our collections that illuminate our history and our world.

Join us!

The Transcription Center: <https://transcription.si.edu>

On Facebook: <https://www.facebook.com/SmithsonianTranscriptionCenter>

On Twitter: [@TranscribeSI](https://twitter.com/TranscribeSI)

Connect with the Smithsonian

Smithsonian Institution: www.si.edu

On Facebook: <https://www.facebook.com/Smithsonian>

On Twitter: [@smithsonian](https://twitter.com/smithsonian)