



Smithsonian Institution

National Museum of the American Indian Archives Center

Museum of the American Indian, Heye Foundation - Annual Reports, 1938-1941

Extracted on Mar-29-2024 07:45:04

The Smithsonian Institution thanks all digital volunteers that transcribed and reviewed this material. Your work enriches Smithsonian collections, making them available to anyone with an interest in using them.

The Smithsonian Institution (the "Smithsonian") provides the content on this website (transcription.si.edu), other Smithsonian websites, and third-party sites on which it maintains a presence ("SI Websites") in support of its mission for the "increase and diffusion of knowledge." The Smithsonian invites visitors to use its online content for personal, educational and other non-commercial purposes. By using this website, you accept and agree to abide by the [following terms](#).

- If sharing the material in personal and educational contexts, please cite the National Museum of the American Indian Archives Center as source of the content and the project title as provided at the top of the document. Include the accession number or collection name; when possible, link to the National Museum of the American Indian Archives Center website.
- If you wish to use this material in a for-profit publication, exhibition, or online project, please contact National Museum of the American Indian Archives Center or transcribe@si.edu

For more information on this project and related material, contact the National Museum of the American Indian Archives Center. [See this project](#) and other collections in the Smithsonian Transcription Center.

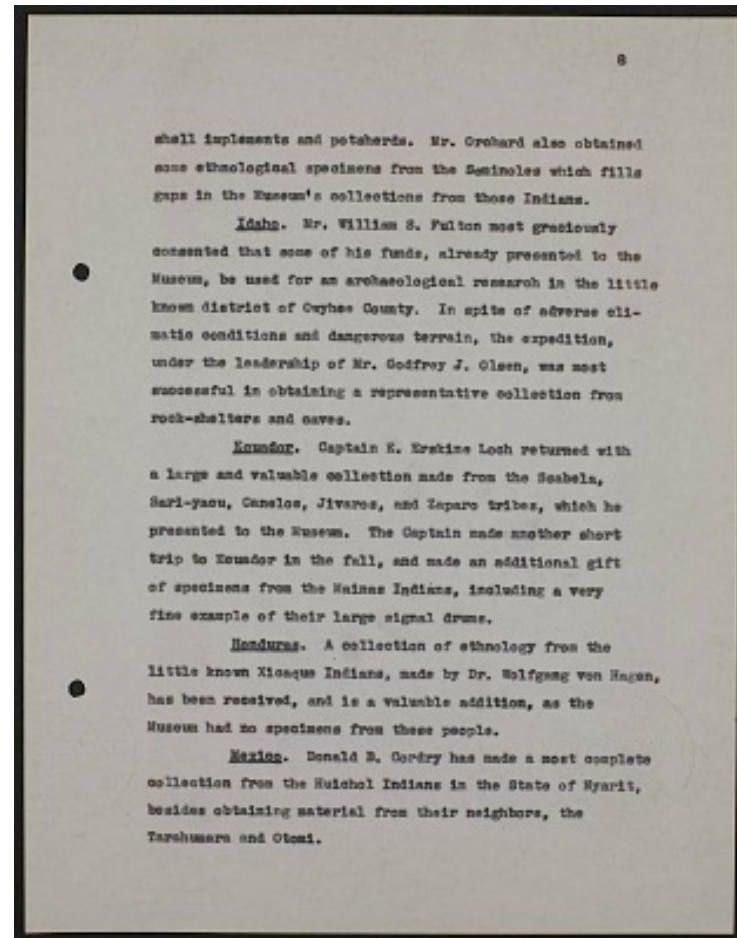
shell implements and potsherds. Mr. Orchard also obtained some ethnological specimens from the Seminoles which fills gaps in the Museum's collections from those Indians.

Idaho. Mr. William S. Fulton most graciously consented that some of his funds, already presented to the Museum, be used for an archaeological research in the little known district of Owyhee County. In spite of adverse climatic conditions and dangerous terrain, the expedition, under the leadership of Mr. Godfrey J. Olsen, was most successful in obtaining a representative collection from rock-shelters and caves.

Ecuador. Captain E. Erskine Loch returned with a large and valuable collection made from the Ssabela, Sari-yacu, Canelos, Jivaros, and Zaparo tribes, which he presented to the Museum. The Captain made another short trip to Ecuador in the fall, and made an additional gift of specimens from the Mainas Indians, including a very fine example of their large signal drums.

Honduras. A collection of ethnology from the little known Xicaque Indians, made by Dr. Wolfgang von Hagen, has been received, and is a valuable addition, as the Museum had no specimens from these people.

Mexico. Donald B. Cordry has made a most complete collection from the Huichol Indians in the State of Nayarit, besides obtaining material from their neighbors, the Tarahumara and Otomi.



Museum of the American Indian, Heye Foundation - Annual Reports, 1938-1941

Transcribed and Reviewed by Digital Volunteers
Extracted Mar-29-2024 07:45:04



Smithsonian Institution

National Museum of the American Indian Archives Center

The mission of the Smithsonian is the increase and diffusion of knowledge - shaping the future by preserving our heritage, discovering new knowledge, and sharing our resources with the world. Founded in 1846, the Smithsonian is the world's largest museum and research complex, consisting of 19 museums and galleries, the National Zoological Park, and nine research facilities. Become an active part of our mission through the Transcription Center. Together, we are discovering secrets hidden deep inside our collections that illuminate our history and our world.

Join us!

The Transcription Center: <https://transcription.si.edu>

On Facebook: <https://www.facebook.com/SmithsonianTranscriptionCenter>

On Twitter: [@TranscribeSI](https://twitter.com/TranscribeSI)

Connect with the Smithsonian

Smithsonian Institution: www.si.edu

On Facebook: <https://www.facebook.com/Smithsonian>

On Twitter: [@smithsonian](https://twitter.com/smithsonian)