



Smithsonian Institution

National Museum of the American Indian Archives Center

Museum of the American Indian, Heye Foundation - Annual Reports, 1938-1941

Extracted on Apr-19-2024 12:39:01

The Smithsonian Institution thanks all digital volunteers that transcribed and reviewed this material. Your work enriches Smithsonian collections, making them available to anyone with an interest in using them.

The Smithsonian Institution (the "Smithsonian") provides the content on this website (transcription.si.edu), other Smithsonian websites, and third-party sites on which it maintains a presence ("SI Websites") in support of its mission for the "increase and diffusion of knowledge." The Smithsonian invites visitors to use its online content for personal, educational and other non-commercial purposes. By using this website, you accept and agree to abide by the [following terms](#).

- If sharing the material in personal and educational contexts, please cite the National Museum of the American Indian Archives Center as source of the content and the project title as provided at the top of the document. Include the accession number or collection name; when possible, link to the National Museum of the American Indian Archives Center website.
- If you wish to use this material in a for-profit publication, exhibition, or online project, please contact National Museum of the American Indian Archives Center or transcribe@si.edu

For more information on this project and related material, contact the National Museum of the American Indian Archives Center. [See this project](#) and other collections in the Smithsonian Transcription Center.

6.

MUSEUM ANNEX.

The finishing coat of green on the iron fence enclosing the grounds was completed, and the grounds have been maintained in the usual manner. Admittance, as always, was granted to all applicants, and the attendance during the twelve months was 288.

CHANGES IN STAFF.

There were no changes in the staff during the fiscal year.

Dr. Bruno Oettking remains as curator of the Physical Anthropological Department, without salary.

EXPEDITIONS.

Haiti. Under the direction of Mr. Frank R. Crumbie, Jr. an expedition was sent to the Island of La Gonave, Haiti, where a collection of 119 specimens from the caves on that island was obtained. Most noteworthy are a series of unique carved wooden objects, and several entire pottery bowls.

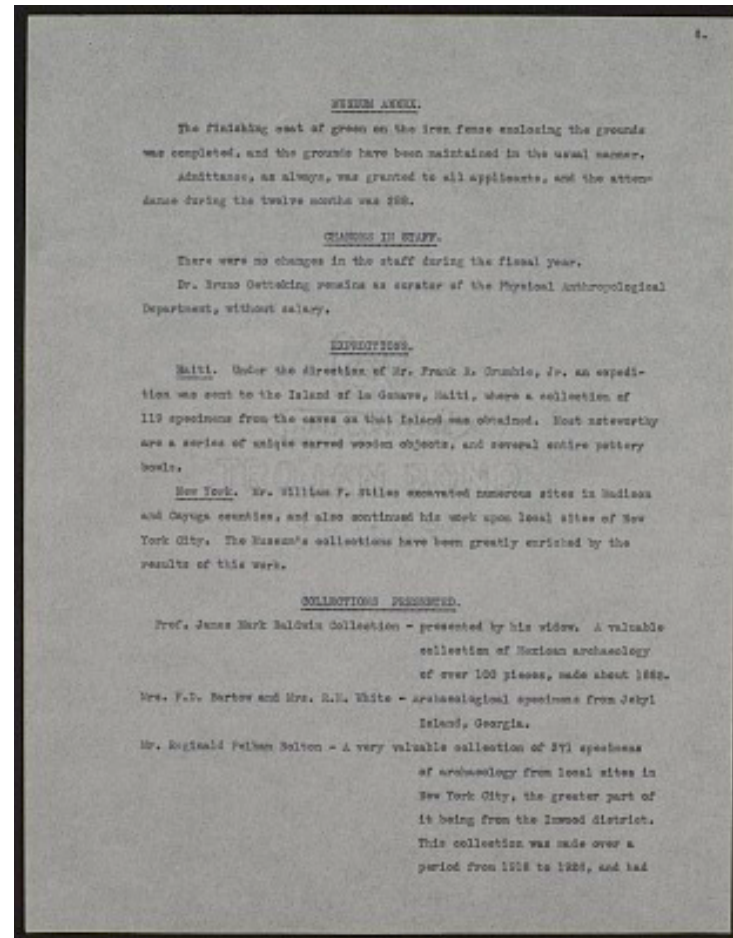
New York. Mr. William F. Stiles excavated numerous sites in Madison and Cayuga counties, and also continued his work upon local sites of New York City. The Museum's collections have been greatly enriched by the results of this work.

COLLECTIONS PRESENTED.

Prof. James Mark Baldwin Collection - presented by his widow. A valuable collection of Mexican archaeology of over 100 pieces, made about 1885.

Mrs. F.D. Bartow and Mrs. R.H. White - Archaeological specimens from Jekyll Island, Georgia.

Mr. Reginald Pelham Bolton - A very valuable collection of 371 specimens of archaeology from local sites in New York City, the greater part of it being from the Inwood district. This collection was made over a period from 1918 to 1926, and had



Museum of the American Indian, Heye Foundation - Annual Reports, 1938-1941

Transcribed and Reviewed by Digital Volunteers

Extracted Apr-19-2024 12:39:01



Smithsonian Institution

National Museum of the American Indian Archives Center

The mission of the Smithsonian is the increase and diffusion of knowledge - shaping the future by preserving our heritage, discovering new knowledge, and sharing our resources with the world. Founded in 1846, the Smithsonian is the world's largest museum and research complex, consisting of 19 museums and galleries, the National Zoological Park, and nine research facilities. Become an active part of our mission through the Transcription Center. Together, we are discovering secrets hidden deep inside our collections that illuminate our history and our world.

Join us!

The Transcription Center: <https://transcription.si.edu>

On Facebook: <https://www.facebook.com/SmithsonianTranscriptionCenter>

On Twitter: [@TranscribeSI](https://twitter.com/TranscribeSI)

Connect with the Smithsonian

Smithsonian Institution: www.si.edu

On Facebook: <https://www.facebook.com/Smithsonian>

On Twitter: [@smithsonian](https://twitter.com/smithsonian)