



Smithsonian Institution

National Museum of the American Indian Archives Center

Museum of the American Indian, Heye Foundation - Annual Reports, 1942-1945

Extracted on Feb-06-2023 05:01:13

The Smithsonian Institution thanks all digital volunteers that transcribed and reviewed this material. Your work enriches Smithsonian collections, making them available to anyone with an interest in using them.

The Smithsonian Institution (the "Smithsonian") provides the content on this website (transcription.si.edu), other Smithsonian websites, and third-party sites on which it maintains a presence ("SI Websites") in support of its mission for the "increase and diffusion of knowledge." The Smithsonian invites visitors to use its online content for personal, educational and other non-commercial purposes. By using this website, you accept and agree to abide by the [following terms](#).

- If sharing the material in personal and educational contexts, please cite the National Museum of the American Indian Archives Center as source of the content and the project title as provided at the top of the document. Include the accession number or collection name; when possible, link to the National Museum of the American Indian Archives Center website.
- If you wish to use this material in a for-profit publication, exhibition, or online project, please contact National Museum of the American Indian Archives Center or transcribe@si.edu

For more information on this project and related material, contact the National Museum of the American Indian Archives Center. [See this project](#) and other collections in the Smithsonian Transcription Center.

6.

MUSEUM BUILDING.

The Museum Building has been maintained in the usual manner during the past year.

MUSEUM ANNEX.

The grounds have been maintained in the usual manner.

Admittance, as always, was granted to all applicants, and the attendance during the twelve months was 341.

CHANGE IN STAFF.

The only changes in the staff during the fiscal year have been in regard to the outside day watchmen as follows: Charles Mauger resigned in July, and in the same month Peter J. McGoldrick was appointed in his position.

EXPEDITIONS.

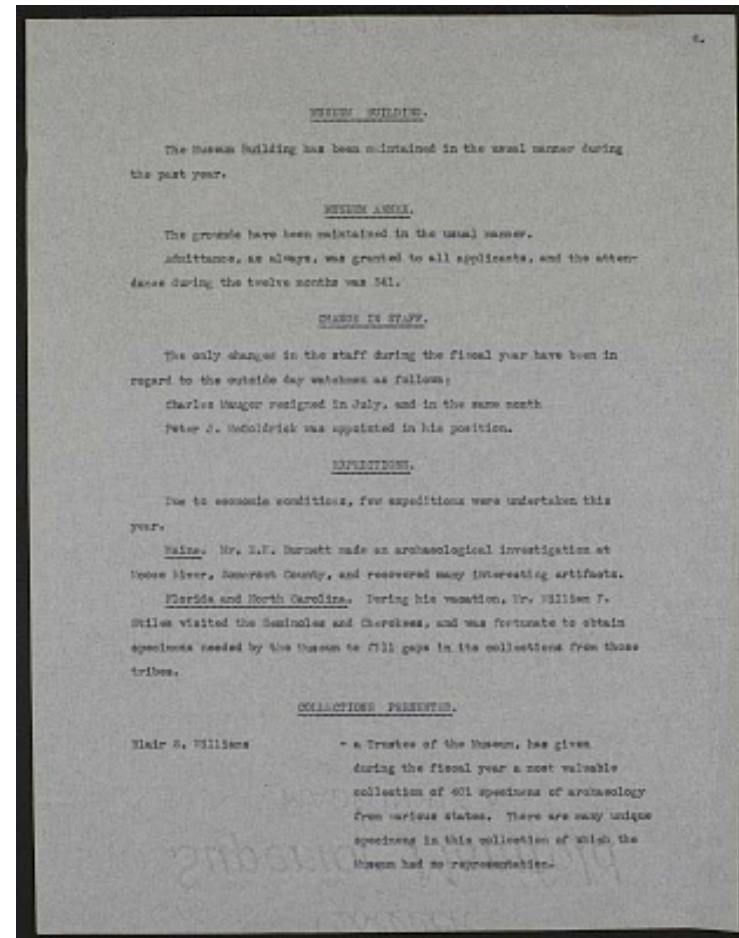
Due to economic conditions, few expeditions were undertaken this year.

Maine. Mr. E. K. Burnett made an archaeological investigation at Moose River, Somerset County, and recovered many interesting artifacts.

Florida and North Carolina. During his vacation, Mr. William F. Stiles visited the Seminoles and Cherokees, and was fortunate to obtain specimens needed by the Museum to fill gaps in its collections from those tribes.

COLLECTIONS PRESENTED.

Blair S. Williams - a Trustee of the Museum, has given during the fiscal year a most valuable collection of 401 specimens of archaeology from various states. There are many unique specimens in this collection of which the Museum had no representation.



Museum of the American Indian, Heye Foundation - Annual Reports, 1942-1945
Transcribed and Reviewed by Digital Volunteers
Extracted Feb-06-2023 05:01:13



Smithsonian Institution

National Museum of the American Indian Archives Center

The mission of the Smithsonian is the increase and diffusion of knowledge - shaping the future by preserving our heritage, discovering new knowledge, and sharing our resources with the world. Founded in 1846, the Smithsonian is the world's largest museum and research complex, consisting of 19 museums and galleries, the National Zoological Park, and nine research facilities. Become an active part of our mission through the Transcription Center. Together, we are discovering secrets hidden deep inside our collections that illuminate our history and our world.

Join us!

The Transcription Center: <https://transcription.si.edu>

On Facebook: <https://www.facebook.com/SmithsonianTranscriptionCenter>

On Twitter: [@TranscribeSI](https://twitter.com/TranscribeSI)

Connect with the Smithsonian

Smithsonian Institution: www.si.edu

On Facebook: <https://www.facebook.com/Smithsonian>

On Twitter: [@smithsonian](https://twitter.com/smithsonian)