



**Smithsonian Institution**

*National Museum of the American Indian Archives Center*

## **Museum of the American Indian, Heye Foundation - Annual Reports, 1946-1950**

Extracted on Apr-19-2024 03:23:20

**The Smithsonian Institution thanks all digital volunteers that transcribed and reviewed this material. Your work enriches Smithsonian collections, making them available to anyone with an interest in using them.**

The Smithsonian Institution (the "Smithsonian") provides the content on this website ([transcription.si.edu](https://transcription.si.edu)), other Smithsonian websites, and third-party sites on which it maintains a presence ("SI Websites") in support of its mission for the "increase and diffusion of knowledge." The Smithsonian invites visitors to use its online content for personal, educational and other non-commercial purposes. By using this website, you accept and agree to abide by the [following terms](#).

- If sharing the material in personal and educational contexts, please cite the National Museum of the American Indian Archives Center as source of the content and the project title as provided at the top of the document. Include the accession number or collection name; when possible, link to the National Museum of the American Indian Archives Center website.
- If you wish to use this material in a for-profit publication, exhibition, or online project, please contact National Museum of the American Indian Archives Center or [transcribe@si.edu](mailto:transcribe@si.edu)

For more information on this project and related material, contact the National Museum of the American Indian Archives Center. [See this project](#) and other collections in the Smithsonian Transcription Center.

There have been 118 readers during the year.

Seventy-eight typed bibliographies of varying lengths have been sent to enquirers through the year.

The Library carried 32 paid memberships in various societies for their publications.

There were 6 new serial issues added during the year.

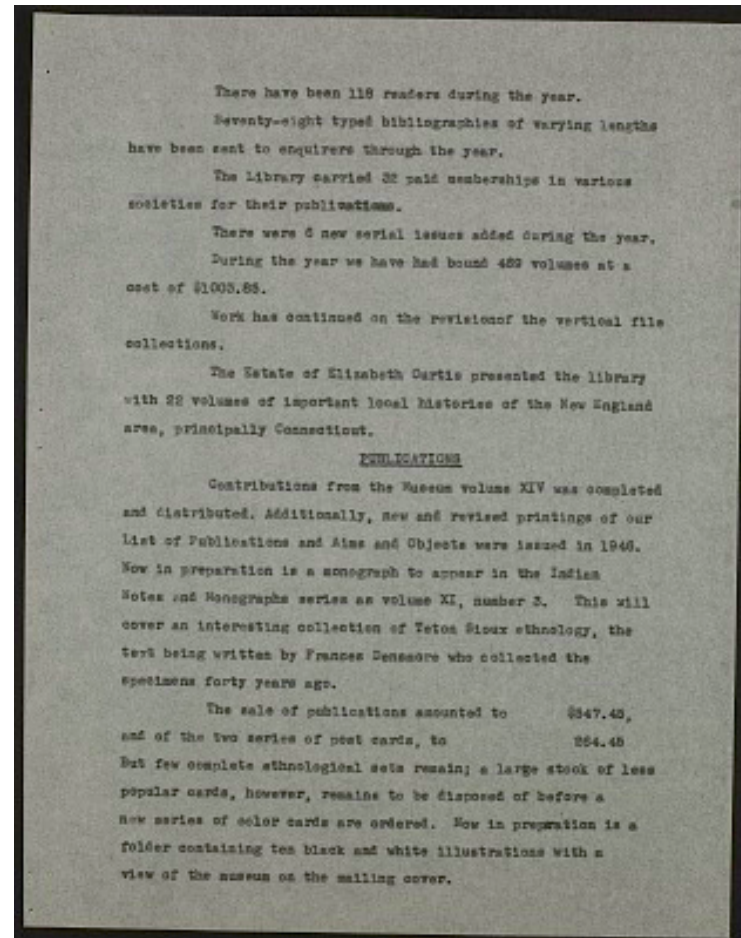
During the year we have had bound 469 volumes at a cost of \$1003.85.

Work has continued on the revision of the vertical file collections.

The Estate of Elizabeth Curtis presented the library with 22 volumes of important local histories of the New England area, principally Connecticut.

#### PUBLICATIONS

Contributions from the Museum volume XIV was completed and distributed. Additionally, new and revised printings of our List of Publications and Aims and Objects were issued in 1946. Now in preparation is a monograph to appear in the Indian Notes and Monographs series as volume XI, number 3. This will cover an interesting collection of Teton Sioux ethnology, the text being written by Frances Densmore who collected the specimens forty years ago. The sale of publications amounted to \$547.45, and of the two series of post cards, to 264.45. But few complete ethnological sets remain; a large stock of less popular cards, however, remains to be disposed of before a new series of color cards are ordered. Now in preparation is a folder containing ten black and white illustrations with a view of the museum on the mailing cover.



Museum of the American Indian, Heye Foundation - Annual Reports, 1946-1950

Transcribed and Reviewed by Digital Volunteers  
Extracted Apr-19-2024 03:23:20



## Smithsonian Institution

*National Museum of the American Indian Archives Center*

The mission of the Smithsonian is the increase and diffusion of knowledge - shaping the future by preserving our heritage, discovering new knowledge, and sharing our resources with the world. Founded in 1846, the Smithsonian is the world's largest museum and research complex, consisting of 19 museums and galleries, the National Zoological Park, and nine research facilities. Become an active part of our mission through the Transcription Center. Together, we are discovering secrets hidden deep inside our collections that illuminate our history and our world.

Join us!

The Transcription Center: <https://transcription.si.edu>

On Facebook: <https://www.facebook.com/SmithsonianTranscriptionCenter>

On Twitter: [@TranscribeSI](https://twitter.com/TranscribeSI)

Connect with the Smithsonian

Smithsonian Institution: [www.si.edu](http://www.si.edu)

On Facebook: <https://www.facebook.com/Smithsonian>

On Twitter: [@smithsonian](https://twitter.com/smithsonian)