



**Smithsonian Institution**

*National Museum of the American Indian Archives Center*

## **Museum of the American Indian, Heye Foundation - Annual Reports, 1946-1950**

Extracted on Apr-16-2024 03:24:12

**The Smithsonian Institution thanks all digital volunteers that transcribed and reviewed this material. Your work enriches Smithsonian collections, making them available to anyone with an interest in using them.**

The Smithsonian Institution (the "Smithsonian") provides the content on this website ([transcription.si.edu](https://transcription.si.edu)), other Smithsonian websites, and third-party sites on which it maintains a presence ("SI Websites") in support of its mission for the "increase and diffusion of knowledge." The Smithsonian invites visitors to use its online content for personal, educational and other non-commercial purposes. By using this website, you accept and agree to abide by the [following terms](#).

- If sharing the material in personal and educational contexts, please cite the National Museum of the American Indian Archives Center as source of the content and the project title as provided at the top of the document. Include the accession number or collection name; when possible, link to the National Museum of the American Indian Archives Center website.
- If you wish to use this material in a for-profit publication, exhibition, or online project, please contact National Museum of the American Indian Archives Center or [transcribe@si.edu](mailto:transcribe@si.edu)

For more information on this project and related material, contact the National Museum of the American Indian Archives Center. [See this project](#) and other collections in the Smithsonian Transcription Center.

of stock issues and on motion duly made and seconded it was resolved that the Treasurer in his discretion be authorized to make such purchases or sales as would bring various issues in the portfolio into a round number of shares.

The Trustees upon motion made and duly seconded authorized expenditure of the Foundation to finance Mr. Bernard Edley's ethnological expedition to the Santa Cruz Indians, State of Quintana Roo, Mexico.

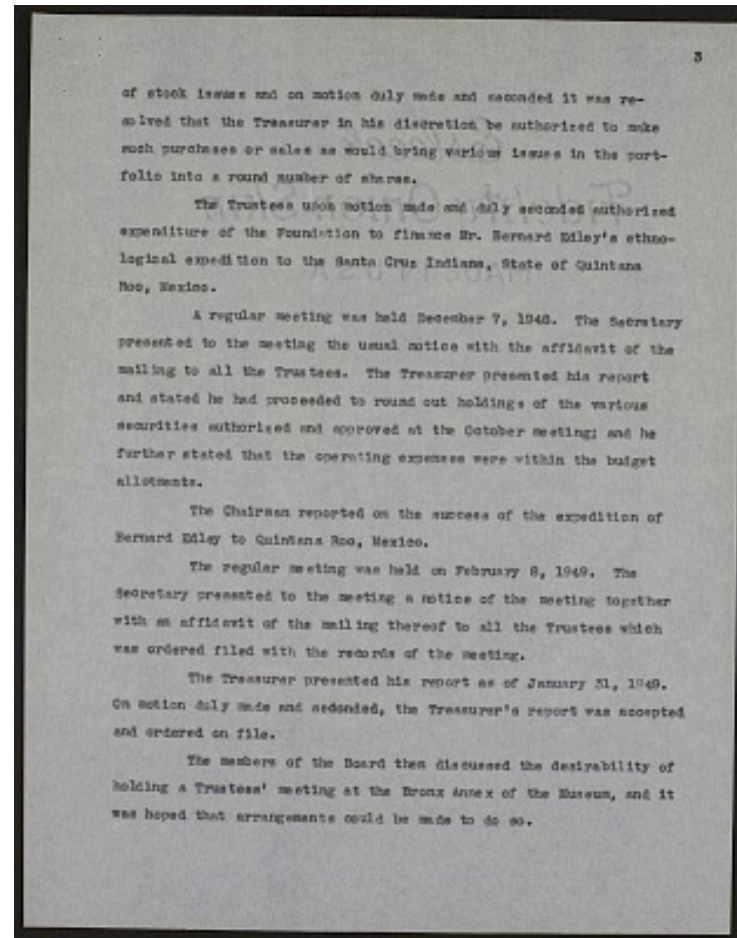
A regular meeting was held December 7, 1948. The Secretary presented to the meeting the usual notice with the affidavit of the mailing to all the Trustees. The Treasurer presented his report and stated he had proceeded to round out holdings of the various securities authorized and approved at the October meeting; and he further stated that the operating expenses were within the budget allotments.

The Chairman reported on the success of the expedition of Bernard Edley to Quintana Roo, Mexico.

The regular meeting was held on February 8, 1949. The Secretary presented to the meeting a notice of the meeting together with an affidavit of the mailing thereof to all the Trustees which was ordered filed with the records of the meeting.

The Treasurer presented his report as of January 31, 1949. On motion duly made and seconded, the Treasurer's report was accepted and ordered on file.

The members of the Board then discussed the desirability of holding a Trustees' meeting at the Bronx Annex of the Museum, and it was hoped that arrangements could be made to do so.



Museum of the American Indian, Heye Foundation - Annual Reports, 1946-1950  
Transcribed and Reviewed by Digital Volunteers  
Extracted Apr-16-2024 03:24:12



## Smithsonian Institution

*National Museum of the American Indian Archives Center*

The mission of the Smithsonian is the increase and diffusion of knowledge - shaping the future by preserving our heritage, discovering new knowledge, and sharing our resources with the world. Founded in 1846, the Smithsonian is the world's largest museum and research complex, consisting of 19 museums and galleries, the National Zoological Park, and nine research facilities. Become an active part of our mission through the Transcription Center. Together, we are discovering secrets hidden deep inside our collections that illuminate our history and our world.

Join us!

The Transcription Center: <https://transcription.si.edu>

On Facebook: <https://www.facebook.com/SmithsonianTranscriptionCenter>

On Twitter: [@TranscribeSI](https://twitter.com/TranscribeSI)

Connect with the Smithsonian

Smithsonian Institution: [www.si.edu](http://www.si.edu)

On Facebook: <https://www.facebook.com/Smithsonian>

On Twitter: [@smithsonian](https://twitter.com/smithsonian)