



Smithsonian Institution

National Museum of the American Indian Archives Center

Museum of the American Indian, Heye Foundation - Annual Reports, 1946-1950

Extracted on Apr-19-2024 04:49:48

The Smithsonian Institution thanks all digital volunteers that transcribed and reviewed this material. Your work enriches Smithsonian collections, making them available to anyone with an interest in using them.

The Smithsonian Institution (the "Smithsonian") provides the content on this website (transcription.si.edu), other Smithsonian websites, and third-party sites on which it maintains a presence ("SI Websites") in support of its mission for the "increase and diffusion of knowledge." The Smithsonian invites visitors to use its online content for personal, educational and other non-commercial purposes. By using this website, you accept and agree to abide by the [following terms](#).

- If sharing the material in personal and educational contexts, please cite the National Museum of the American Indian Archives Center as source of the content and the project title as provided at the top of the document. Include the accession number or collection name; when possible, link to the National Museum of the American Indian Archives Center website.
- If you wish to use this material in a for-profit publication, exhibition, or online project, please contact National Museum of the American Indian Archives Center or transcribe@si.edu

For more information on this project and related material, contact the National Museum of the American Indian Archives Center. [See this project](#) and other collections in the Smithsonian Transcription Center.

EXCHANGES

Gila Pueblo - 127 specimens of potsherds from Hawikuh, New Mexico, for 58 sherds representing the various phases of pottery at Snaketown, Arizona.

Dr. Archibald Rutledge - Ohio and Oregon archaeological pieces for a stone adze handle from Florida.

Mrs. H. D. Barrow - A small pottery figure from Mexico for an unusual carved and painted dance baton from the Tlingit.

Mr. John O'Halloran - Nassau County archaeology for a number of pieces from Suffolk County.

Mr. William Shirley Fulton - 13 specimens of California ethnology for cash.

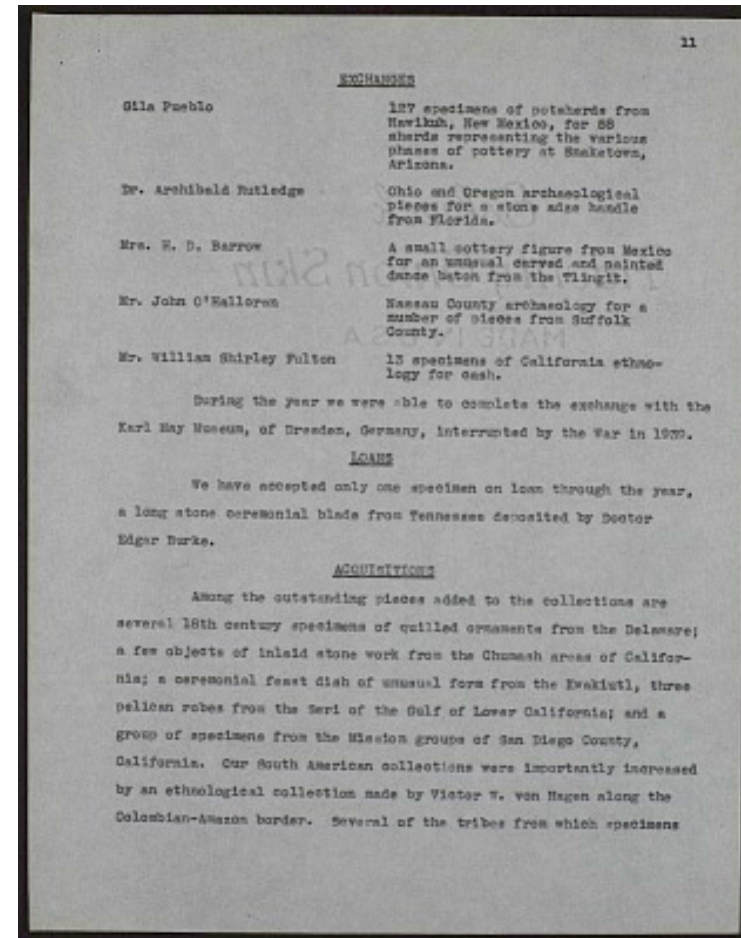
During the year we were able to complete the exchange with the Karl May Museum, of Dresden, Germany, interrupted by the War in 1939.

LOANS

We have accepted only one specimen on loan through the year, a long stone ceremonial blade from Tennessee deposited by Doctor Edgar Burke.

ACQUISITIONS

Among the outstanding pieces added to the collections are several 18th century specimens of quilled ornaments from the Delaware; a few objects of inlaid stone work from the Chumash areas of California; a ceremonial feast dish of unusual form from the Kwakiutl, three pelican robes from the Seri of the Gulf of Lower California; and a group of specimens from the Mission groups of San Diego County, California. Our South American collections were importantly increased by an ethnological collection made by Victor W. von Hagen along the Colombian-Amazon border. Several of the tribes from which specimens



Museum of the American Indian, Heye Foundation - Annual Reports, 1946-1950
 Transcribed and Reviewed by Digital Volunteers
 Extracted Apr-19-2024 04:49:48



Smithsonian Institution

National Museum of the American Indian Archives Center

The mission of the Smithsonian is the increase and diffusion of knowledge - shaping the future by preserving our heritage, discovering new knowledge, and sharing our resources with the world. Founded in 1846, the Smithsonian is the world's largest museum and research complex, consisting of 19 museums and galleries, the National Zoological Park, and nine research facilities. Become an active part of our mission through the Transcription Center. Together, we are discovering secrets hidden deep inside our collections that illuminate our history and our world.

Join us!

The Transcription Center: <https://transcription.si.edu>

On Facebook: <https://www.facebook.com/SmithsonianTranscriptionCenter>

On Twitter: [@TranscribeSI](https://twitter.com/TranscribeSI)

Connect with the Smithsonian

Smithsonian Institution: www.si.edu

On Facebook: <https://www.facebook.com/Smithsonian>

On Twitter: [@smithsonian](https://twitter.com/smithsonian)