



**Smithsonian Institution**

*Smithsonian Institution Archives*

## **Proceedings of the Board of Regents Meeting – January 15, 1969**

Extracted on Jan-26-2022 12:12:19

**The Smithsonian Institution thanks all digital volunteers that transcribed and reviewed this material. Your work enriches Smithsonian collections, making them available to anyone with an interest in using them.**

The Smithsonian Institution (the "Smithsonian") provides the content on this website ([transcription.si.edu](https://transcription.si.edu)), other Smithsonian websites, and third-party sites on which it maintains a presence ("SI Websites") in support of its mission for the "increase and diffusion of knowledge." The Smithsonian invites visitors to use its online content for personal, educational and other non-commercial purposes. By using this website, you accept and agree to abide by the [following terms](#).

- If sharing the material in personal and educational contexts, please cite the Smithsonian Institution Archives as source of the content and the project title as provided at the top of the document. Include the accession number or collection name; when possible, link to the Smithsonian Institution Archives website.
- If you wish to use this material in a for-profit publication, exhibition, or online project, please contact Smithsonian Institution Archives or [transcribe@si.edu](mailto:transcribe@si.edu)

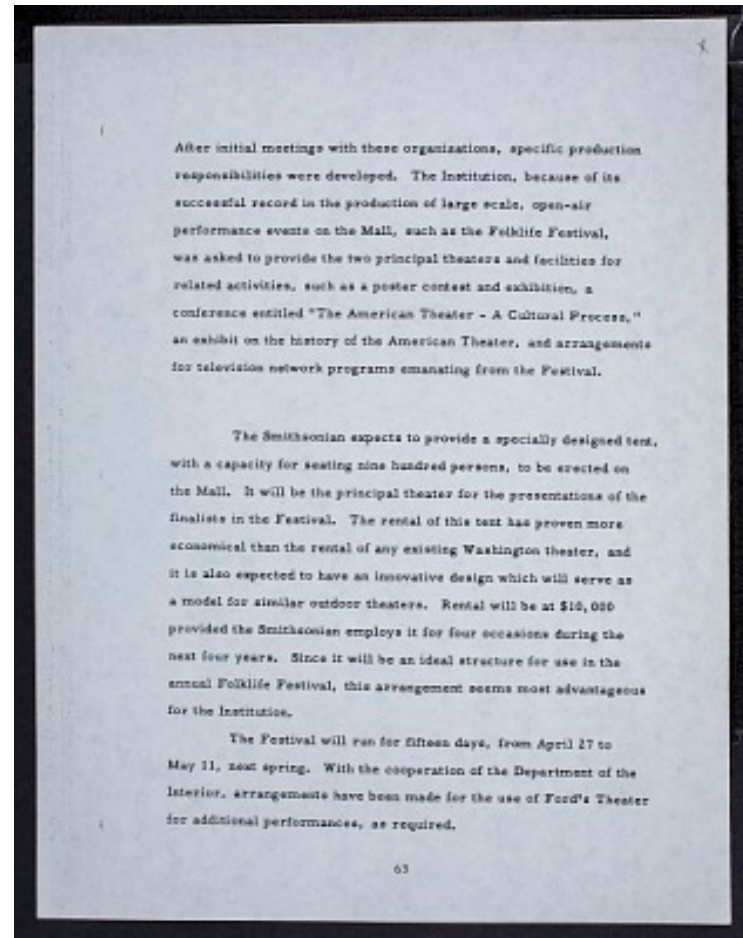
For more information on this project and related material, contact the Smithsonian Institution Archives. [See this project](#) and other collections in the Smithsonian Transcription Center.

After initial meetings with these organizations, specific production responsibilities were developed. The Institution, because of its successful record in the production of large scale, open-air performance events on the Mall, such as the Folklife Festival, was asked to provide the two principal theaters and facilities for related activities, such as a poster contest and exhibition, a conference entitled "The American Theater - A Cultural Process," an exhibit on the history of the American Theater, and arrangements for television network programs emanating from the Festival.

The Smithsonian expects to provide a specially designed tent, with a capacity for seating nine hundred persons, to be erected on the Mall. It will be the principal theater for the presentations of the finalists in the Festival. The rental of this tent has proven more economical than the rental of any existing Washington theater, and it is also expected to have an innovative design which will serve as a model for similar outdoor theaters. Rental will be at \$10,000 provided the Smithsonian employs it for four occasions during the next four years. Since it will be an ideal structure for use in the annual Folklife Festival, this arrangement seems most advantageous for the Institution.

The Festival will run for fifteen days, from April 27 to May 11 next spring. With the cooperation of the Department of the Interior, arrangements have been made for the use of Ford's Theater for additional performances, as required.

63



Proceedings of the Board of Regents Meeting – January 15, 1969  
Transcribed and Reviewed by Digital Volunteers  
Extracted Jan-26-2022 12:12:19



## Smithsonian Institution

*Smithsonian Institution Archives*

The mission of the Smithsonian is the increase and diffusion of knowledge - shaping the future by preserving our heritage, discovering new knowledge, and sharing our resources with the world. Founded in 1846, the Smithsonian is the world's largest museum and research complex, consisting of 19 museums and galleries, the National Zoological Park, and nine research facilities. Become an active part of our mission through the Transcription Center. Together, we are discovering secrets hidden deep inside our collections that illuminate our history and our world.

Join us!

The Transcription Center: <https://transcription.si.edu>

On Facebook: <https://www.facebook.com/SmithsonianTranscriptionCenter>

On Twitter: [@TranscribeSI](https://twitter.com/TranscribeSI)

Connect with the Smithsonian

Smithsonian Institution: [www.si.edu](http://www.si.edu)

On Facebook: <https://www.facebook.com/Smithsonian>

On Twitter: [@smithsonian](https://twitter.com/smithsonian)