



**Smithsonian Institution**

*Archives of American Art*

## **Jacques Seligmann & Co. Records, New York Office Correspondence: Bo-Bu, 1920-1923**

Extracted on Apr-23-2024 06:03:11

**The Smithsonian Institution thanks all digital volunteers that transcribed and reviewed this material. Your work enriches Smithsonian collections, making them available to anyone with an interest in using them.**

The Smithsonian Institution (the "Smithsonian") provides the content on this website ([transcription.si.edu](https://transcription.si.edu)), other Smithsonian websites, and third-party sites on which it maintains a presence ("SI Websites") in support of its mission for the "increase and diffusion of knowledge." The Smithsonian invites visitors to use its online content for personal, educational and other non-commercial purposes. By using this website, you accept and agree to abide by the [following terms](#).

- If sharing the material in personal and educational contexts, please cite the Archives of American Art as source of the content and the project title as provided at the top of the document. Include the accession number or collection name; when possible, link to the Archives of American Art website.
- If you wish to use this material in a for-profit publication, exhibition, or online project, please contact Archives of American Art or [transcribe@si.edu](mailto:transcribe@si.edu)

For more information on this project and related material, contact the Archives of American Art. [See this project](#) and other collections in the Smithsonian Transcription Center.

[[stamped]] JAN 4- 1923 [[/stamped]]  
^[[checkmark]]

## DESCRIPTION OF TAPESTRIES

No 773/4866.- A tapestry Ateliers de Paris, gold weave, of the beginning of the 17th century, representing the struggle of Diana (Artemis) and Apollo against the Niobides. Niobe, queen of Phrygia, having had the insolence to compare her fecundity with that of Latone, the Goddess took her revenge in having the 12 children of Niobe killed with arrows on the Sipyle mountain by her children Apollo and Artemis. The tapestry represents this scene.

This tapestry, which was made about 1630, in the studios of François de la Planche et Marc de Coomans, founders of the "Gobelins" is based on the "Histoire de Diane" in 8 tableaux after Toussaint Dubreuil, and is reproduced page 15 in the petit "Guiffrey"  
Comes from the collection of Marnier-Lapostolle.  
13' x 16' 9"

No 1343/6366.- A French tapestry of the 15th century.  
"Episode of the Life of Hercules".

Hercules, after having finished his time of servitude with Eurystheus, went to Troy accompanied by a chosen band of adventurers, in order to punish Laomedon, King of Troy, for having refused to reward him as promised for slaying the sea-monster. The city was stormed and taken and the king slain.

In the upper left hand corner, another episode of the Life of Hercules: "Hercules delivering Prometheus from the torture of the Vulture to which he was condemned by Jupiter"  
Comes from the Chateau d'Anet  
11' 6" x 11'.

No 1718/8849.- Four Brussels tapestries beginning of the 18th century, after the cartoons of Van der Meulen (all bearing the arms of Lord Cobham).

1.- Battle in the Wynendael woods. Numerous soldiers and horsemen; in the center, Marshal Lord Cobham on horseback  
10' 7" x 29'

2.- The fire of Lille. In the background the town on fire; in the foreground some horsemen  
10' 4" x 9' 4"

3.- Horsemen attending to their horses. Horses and horsemen  
10' 3 1/2" x 7' 2"

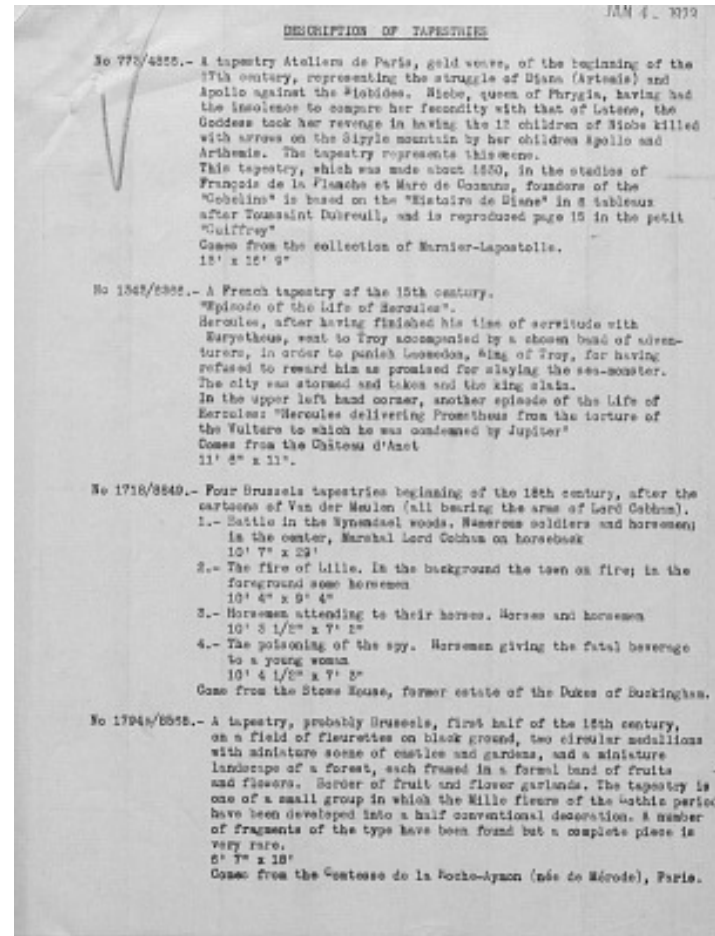
4.- The poisoning of the spy. Horsemen giving the fatal beverage to a young woman  
10' 4 1/2" x 7' 3"

Come from the Stowe House, former estate of the Dukes of Buckingham.

No 1794a/8568.- A tapestry, probably Brussels, first half of the 16th century, on a field of fleurettes on black ground, two circular medallions with miniature scene of castles and gardens, and a miniature landscape of a forest, each framed in a formal band of fruits and flowers. Border of fruit and flower garlands. The tapestry is one of a small group in which the Mille fleurs of the Gothic period have been developed into a half conventional decoration. A number of fragments of the type have been found but a complete piece is very rare.

6' 7" x 18'

Comes from the Comtesse de la Roche-Aymon (née de Mérode), Paris.



Jacques Seligmann & Co. Records, New York Office Correspondence: Bo-  
Bu, 1920-1923  
Transcribed and Reviewed by Digital Volunteers  
Approved by Smithsonian Staff  
Extracted Apr-23-2024 06:03:11



## Smithsonian Institution

*Archives of American Art*

The mission of the Smithsonian is the increase and diffusion of knowledge - shaping the future by preserving our heritage, discovering new knowledge, and sharing our resources with the world. Founded in 1846, the Smithsonian is the world's largest museum and research complex, consisting of 19 museums and galleries, the National Zoological Park, and nine research facilities. Become an active part of our mission through the Transcription Center. Together, we are discovering secrets hidden deep inside our collections that illuminate our history and our world.

Join us!

The Transcription Center: <https://transcription.si.edu>

On Facebook: <https://www.facebook.com/SmithsonianTranscriptionCenter>

On Twitter: [@TranscribeSI](https://twitter.com/TranscribeSI)

Connect with the Smithsonian

Smithsonian Institution: [www.si.edu](http://www.si.edu)

On Facebook: <https://www.facebook.com/Smithsonian>

On Twitter: [@smithsonian](https://twitter.com/smithsonian)