



Smithsonian Institution

Archives of American Art

Jacques Seligmann & Co. Records, New York Office Correspondence: Co, 1920-1922

Extracted on Apr-20-2024 12:15:06

The Smithsonian Institution thanks all digital volunteers that transcribed and reviewed this material. Your work enriches Smithsonian collections, making them available to anyone with an interest in using them.

The Smithsonian Institution (the "Smithsonian") provides the content on this website (transcription.si.edu), other Smithsonian websites, and third-party sites on which it maintains a presence ("SI Websites") in support of its mission for the "increase and diffusion of knowledge." The Smithsonian invites visitors to use its online content for personal, educational and other non-commercial purposes. By using this website, you accept and agree to abide by the [following terms](#).

- If sharing the material in personal and educational contexts, please cite the Archives of American Art as source of the content and the project title as provided at the top of the document. Include the accession number or collection name; when possible, link to the Archives of American Art website.
- If you wish to use this material in a for-profit publication, exhibition, or online project, please contact Archives of American Art or transcribe@si.edu

For more information on this project and related material, contact the Archives of American Art. [See this project](#) and other collections in the Smithsonian Transcription Center.

GS

November 10th 1921

^[[checkmark]]

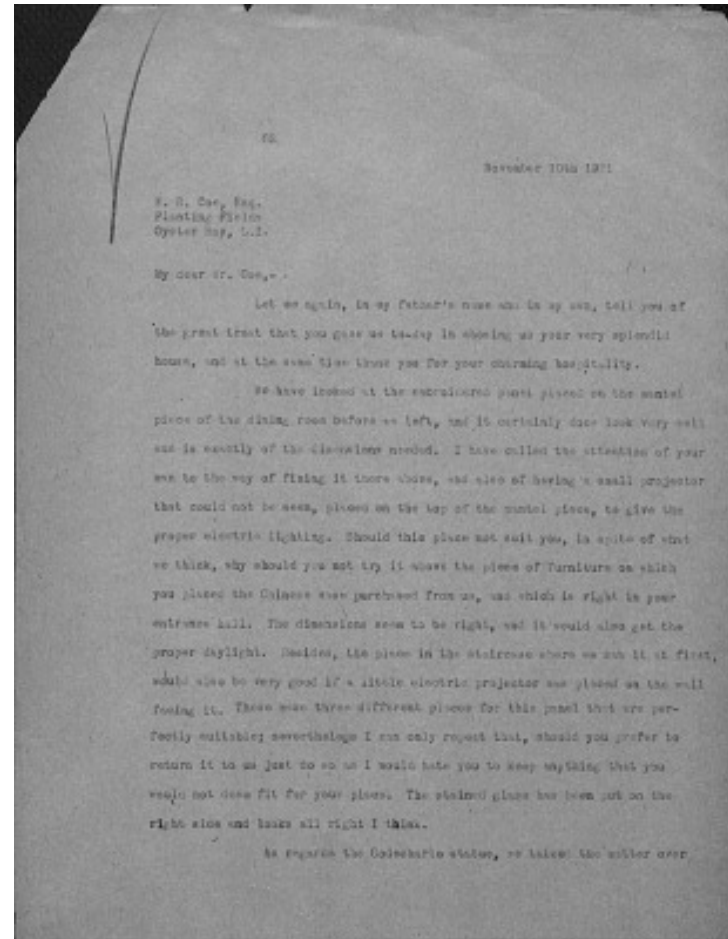
W. R. Coe, Esq.
Planting Fields
Oyster Bay, L.I.

My dear Mr. Coe,-

Let me again, in my father's name and in my own, tell you of the great treat that you gave us to-day in showing us your very splendid house, and at the same time thank you for your charming hospitality.

We have looked at the embroidered panel placed on the mantel piece of the dining room before we left, and it certainly does look very well and is exactly of the dimensions needed. I have called the attention of your man to the way of fixing it there above, and also of having a small projector that could not be seen, placed on top of the mantel piece, to give the proper electric lighting. Should this place not suit you, in spite of what we think, why should you not try it above the piece of furniture on which you placed the Chinese vase purchased from us, and which is right in your entrance hall. The dimensions seem to be right, and it would also get the proper daylight. Besides, the place in the staircase where we saw it at first, would also be very good if a little electric projector was placed on the wall facing it. These make three different places for this panel that are perfectly suitable; nevertheless I can only repeat that, should you prefer to return it to us just to see as I would hate you to keep anything that you would not deem fit for your place. The stained glass has been put on the right side and looks all right I think.

As regards to the Godecharle statue, we talked the matter over



Jacques Seligmann & Co. Records, New York Office Correspondence: Co, 1920-1922
Transcribed and Reviewed by Digital Volunteers
Approved by Smithsonian Staff
Extracted Apr-20-2024 12:15:06



Smithsonian Institution

Archives of American Art

The mission of the Smithsonian is the increase and diffusion of knowledge - shaping the future by preserving our heritage, discovering new knowledge, and sharing our resources with the world. Founded in 1846, the Smithsonian is the world's largest museum and research complex, consisting of 19 museums and galleries, the National Zoological Park, and nine research facilities. Become an active part of our mission through the Transcription Center. Together, we are discovering secrets hidden deep inside our collections that illuminate our history and our world.

Join us!

The Transcription Center: <https://transcription.si.edu>

On Facebook: <https://www.facebook.com/SmithsonianTranscriptionCenter>

On Twitter: [@TranscribeSI](https://twitter.com/TranscribeSI)

Connect with the Smithsonian

Smithsonian Institution: www.si.edu

On Facebook: <https://www.facebook.com/Smithsonian>

On Twitter: [@smithsonian](https://twitter.com/smithsonian)