



Smithsonian Institution

National Museum of African American History and Culture

Catalogue of the Hampton Institute, 1886-87

Extracted on Apr-20-2024 11:36:20

The Smithsonian Institution thanks all digital volunteers that transcribed and reviewed this material. Your work enriches Smithsonian collections, making them available to anyone with an interest in using them.

The Smithsonian Institution (the "Smithsonian") provides the content on this website (transcription.si.edu), other Smithsonian websites, and third-party sites on which it maintains a presence ("SI Websites") in support of its mission for the "increase and diffusion of knowledge." The Smithsonian invites visitors to use its online content for personal, educational and other non-commercial purposes. By using this website, you accept and agree to abide by the [following terms](#).

- If sharing the material in personal and educational contexts, please cite the National Museum of African American History and Culture as source of the content and the project title as provided at the top of the document. Include the accession number or collection name; when possible, link to the National Museum of African American History and Culture website.
- If you wish to use this material in a for-profit publication, exhibition, or online project, please contact National Museum of African American History and Culture or transcribe@si.edu

For more information on this project and related material, contact the National Museum of African American History and Culture. [See this project](#) and other collections in the Smithsonian Transcription Center.

CATALOGUE OF [[line]]

intention to remain through the course, are required of all applicants. Candidates for admission coming from common schools, or from other institutions, must present letters of honorable dismissal and of recommendation. Preference will be given to those who expect to become teachers, or to engage in industrial pursuits.

The stated time for examination is September 29th and 30th. Only those who can enter promptly are sure of securing rooms; those who come late must be satisfied with what accommodation they can get. No one under fourteen or over twenty five years of age will be admitted to the Junior Class. None under seventeen will be admitted to the Night Class. Every student is by enrollment committed to the discipline of the school. The first year is specially probationary. Students may be sent home at any time for unsatisfactory conduct, or if their influence, in the judgement of the school authorities, over others is bad, or for inability to keep up with their classes. Admission at any other than the stated time is allowed only in special cases. Those who arrive late may expect less favorable terms than others.

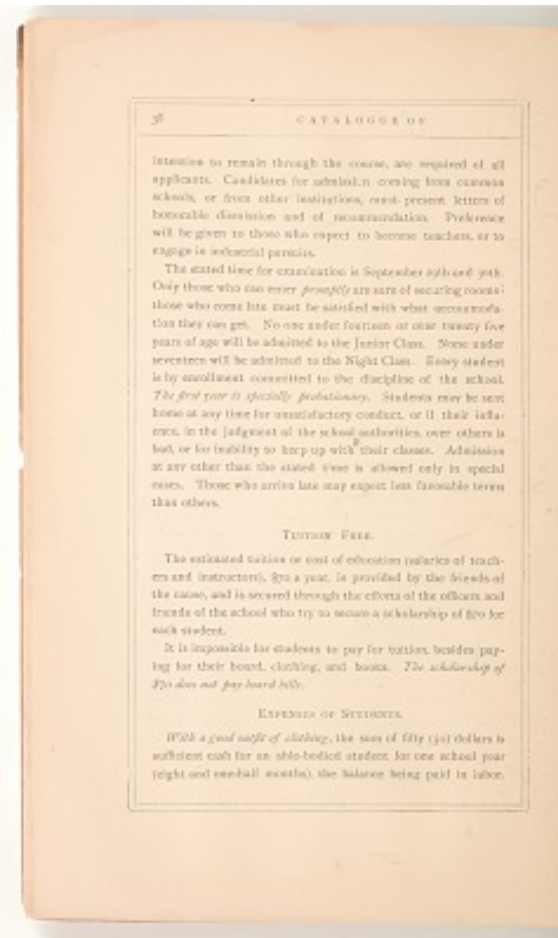
TUITION FREE.

The estimated tuition or cost of education (salaries of teachers and instructors), \$70 a year, is provided by the friends of the cause, and is secured through the efforts of the officers and friends of the school who try to secure a scholarship of \$70 for each student.

It is impossible for students to pay for tuition, besides paying for their board, clothing, and books. The scholarship of \$70 does not pay board bills.

EXPENSES OF STUDENTS.

With a good outfit of clothing, the sum of fifty (50) dollars is sufficient cash for an able-bodied student for one school year (eight and one-half months), the balance being paid in labor.



Catalogue of the Hampton Institute, 1886-87
Transcribed and Reviewed by Digital Volunteers
Extracted Apr-20-2024 11:36:20



Smithsonian Institution

National Museum of African American History and Culture

The mission of the Smithsonian is the increase and diffusion of knowledge - shaping the future by preserving our heritage, discovering new knowledge, and sharing our resources with the world. Founded in 1846, the Smithsonian is the world's largest museum and research complex, consisting of 19 museums and galleries, the National Zoological Park, and nine research facilities. Become an active part of our mission through the Transcription Center. Together, we are discovering secrets hidden deep inside our collections that illuminate our history and our world.

Join us!

The Transcription Center: <https://transcription.si.edu>

On Facebook: <https://www.facebook.com/SmithsonianTranscriptionCenter>

On Twitter: [@TranscribeSI](https://twitter.com/TranscribeSI)

Connect with the Smithsonian

Smithsonian Institution: www.si.edu

On Facebook: <https://www.facebook.com/Smithsonian>

On Twitter: [@smithsonian](https://twitter.com/smithsonian)