



Smithsonian Institution

Smithsonian Institution Archives

A. Stelfox - Field Notes, Volume 7, 1935-1936

Extracted on Apr-23-2024 11:19:34

The Smithsonian Institution thanks all digital volunteers that transcribed and reviewed this material. Your work enriches Smithsonian collections, making them available to anyone with an interest in using them.

The Smithsonian Institution (the "Smithsonian") provides the content on this website (transcription.si.edu), other Smithsonian websites, and third-party sites on which it maintains a presence ("SI Websites") in support of its mission for the "increase and diffusion of knowledge." The Smithsonian invites visitors to use its online content for personal, educational and other non-commercial purposes. By using this website, you accept and agree to abide by the [following terms](#).

- If sharing the material in personal and educational contexts, please cite the Smithsonian Institution Archives as source of the content and the project title as provided at the top of the document. Include the accession number or collection name; when possible, link to the Smithsonian Institution Archives website.
- If you wish to use this material in a for-profit publication, exhibition, or online project, please contact Smithsonian Institution Archives or transcribe@si.edu

For more information on this project and related material, contact the Smithsonian Institution Archives. [See this project](#) and other collections in the Smithsonian Transcription Center.

B/-
1/6
[[preprinted stamp]]
Rubber Stamp Makers
T. Kilmartin & Son
3, Nassau Dublin
Stationers and Printers
[[/preprinted stamp]]

Miss Watson
98 Harolds Cross Rd.

Foley's Hotel Waterville !

Vol. 7.
A. W. Stelfox's diary
1935 - 1936.

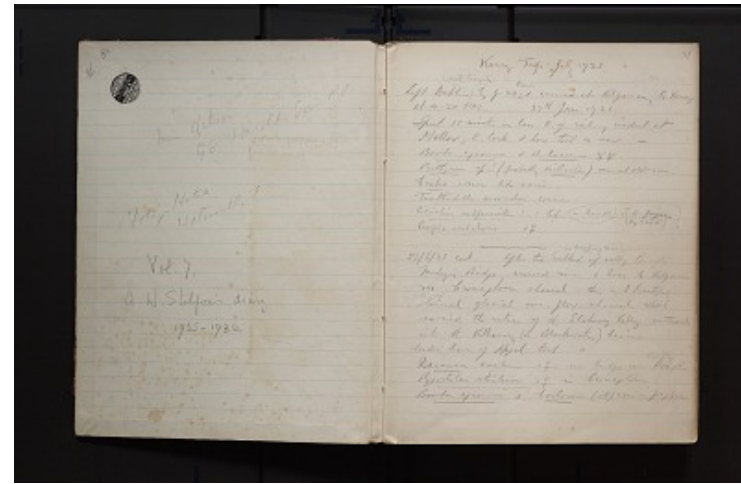
[[end page]]
[[start page]]

(1

Kerry Trip: July 1935.

Left Dublin ^[[circled insertion]] with bicycle [[/circled insertion]] by 9.30
^[[insertion]] train [[/insertion]] & arrived at Kilgarvan, Co. Kerry at 4.30
PM. 27th June 1935.
Spent 15 minutes in lane E. of railway viaduct at Mallow, E. Cork & here
took a car:-
[[underlined]] Bombus agrorum [[/underlined]] & [[underlined]] B.
lucorum [[/underlined]] [[2 virgin female symbols]].
[[underlined]] Psithyrus [[/underlined]] sp. ? (probably [[underlined]]
distinctus [[/underlined]]) several [[2 male symbols]] seen.
[[underlined]] Crabro [[/underlined]] 1 seen like varius.
[[underlined]] Tenthredella mesomela [[/underlined]] common.
[[underlined]] Acaelius subfasciatus [[/underlined]] ? 1 taken with fingers
(by hand)
[[insertion]] on bramble [[/insertion]]
[[underlined]] Pimpla oculatoria [[/underlined]] 1 [[female symbol]]

[[line]]
27/6/35 cont. After tea ^[[insertion]] in drizzling rain! [[/insertion]] walked
up valley towards Morley's Bridge, crossed river & home to Kilgarvan via
Cromagloun channel this is a beautiful "lateral" glacial over-flow-channel
which carried the waters of the Slaheney Valley northwards into the
Killarney (or Blackwater) basins.
Under leaves of Hazel took :-
[[underlined]] Dacnusa areolaris [[/underlined]] 1 [[female symbol]] near
bridges over [[strikethrough]] Loo [[/strikethrough]] Roughty R.
[[underlined]] Pygostolus sticticus [[/underlined]] 1 [[female symbol]] in
Cromagloun.
[[underlined]] Bombus agrorum [[/underlined]] & [[underlined]] hortorum
[[/underlined]] (1 [[female symbol]] seen in foxglove.



A. Stelfox - Field Notes, Volume 7, 1935-1936
Transcribed and Reviewed by Digital Volunteers
Extracted Apr-23-2024 11:19:34



Smithsonian Institution

Smithsonian Institution Archives

The mission of the Smithsonian is the increase and diffusion of knowledge - shaping the future by preserving our heritage, discovering new knowledge, and sharing our resources with the world. Founded in 1846, the Smithsonian is the world's largest museum and research complex, consisting of 19 museums and galleries, the National Zoological Park, and nine research facilities. Become an active part of our mission through the Transcription Center. Together, we are discovering secrets hidden deep inside our collections that illuminate our history and our world.

Join us!

The Transcription Center: <https://transcription.si.edu>

On Facebook: <https://www.facebook.com/SmithsonianTranscriptionCenter>

On Twitter: [@TranscribeSI](https://twitter.com/TranscribeSI)

Connect with the Smithsonian

Smithsonian Institution: www.si.edu

On Facebook: <https://www.facebook.com/Smithsonian>

On Twitter: [@smithsonian](https://twitter.com/smithsonian)