



Smithsonian Institution

Smithsonian Institution Archives

A. Stelfox - Field Notes, Volume 7, 1935-1936

Extracted on Apr-23-2024 10:34:26

The Smithsonian Institution thanks all digital volunteers that transcribed and reviewed this material. Your work enriches Smithsonian collections, making them available to anyone with an interest in using them.

The Smithsonian Institution (the "Smithsonian") provides the content on this website (transcription.si.edu), other Smithsonian websites, and third-party sites on which it maintains a presence ("SI Websites") in support of its mission for the "increase and diffusion of knowledge." The Smithsonian invites visitors to use its online content for personal, educational and other non-commercial purposes. By using this website, you accept and agree to abide by the [following terms](#).

- If sharing the material in personal and educational contexts, please cite the Smithsonian Institution Archives as source of the content and the project title as provided at the top of the document. Include the accession number or collection name; when possible, link to the Smithsonian Institution Archives website.
- If you wish to use this material in a for-profit publication, exhibition, or online project, please contact Smithsonian Institution Archives or transcribe@si.edu

For more information on this project and related material, contact the Smithsonian Institution Archives. [See this project](#) and other collections in the Smithsonian Transcription Center.

2.)

28th June 1935. Warm & very damp, with misty rain off & on, impossible to sweep in most places: no sun.
9.30 AM till 1.0 PM. Valley from Kilgarvan to Morley's Bridge & Crohane Woods, & c, above Morely's Bridge, All Co. S.K.

Bombus agrorum a few [2 virgin female symbols] or [2 female symbols], mostly at Foxgloves.
B. hortorum 1 [female symbol] at foxglove.
B. jonellus 1 fresh looking [female symbol] seen.
Andrena gwynana [2 male symbols] & 1 [female symbol] of 2nd brood at Crohane Wd, [insertion line] = 2
[insertion line]
A. coitana [2 male symbols] & [2 female symbols], fresh, common, on Jasione at 2.
A. subopaca 1 [male symbol] on Jasione at 2.
A. fucata 1 [male symbol] at 2, on Jasione.
Halictus leucopus [2 female symbols] at 2.
H. punctatissimus 1 [female symbol] at 2 on Jasione.
Nomada goodeniana 1 [female symbol] swept by roadside (? dead).

Odynerus pictus 1 [male symbol] var. with whitish bands }
Pompilus nigerrimus 1 [male symbol] examined } Both at moraine below Morley's Bridge = 1.

Crabro varius & palmipes [2 male symbols] & [2 female symbols] (?) at 1; 1 [male symbol] varius at 2.
C. chrysostomus 1 [male symbol] at 2.
C. dimidiatus [2 male symbols] & [2 female symbols] abundant at 1.

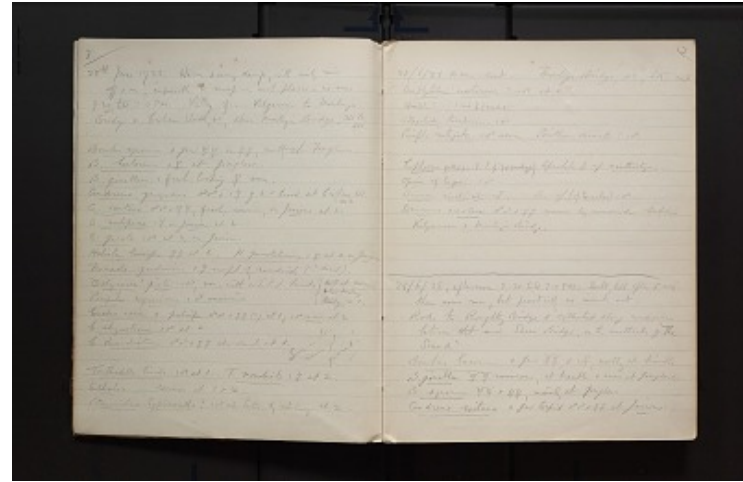
Some in store never yet [underlined] pinned [underlined]!

Tenthredella livida 1 [male symbol] at 1.
T. moniliata 1 [female symbol] at 2.
Athalia common at 1 & 2.
Pteronidea hypoxantha ? 1 [male symbol] at Salix by railway at 2.

[end page]
[start page]

(3

28/6/35 AM. cont. Mosley's Bridge, &c., SK. cont.
Amblyteles oratorius ? 1 [male symbol] at 2.
Hemiteles? 1 red [female symbol] (carded)
Altractodes tenebricosus 1 [male symbol]
Pimpla instigator 1 [male symbol] seen.



Perithous divinator? 1 ♂.

Euphorus pallidipes 1 ♀. E.
sp ? (cf. grandiceps Th.) Apanteles ♀ cf. xanthostigma.
Opius cf. lugens 1 ♂
Bracon rivalis mihi 1 ♀. B.
sp. (cf. tornator) 1 ♂.
Dacnusa areolaris ♂ & ♀
common by roadside between Kilgarvan & Morley's
Bridge.

[line across page]

28/6/35, afternoon 3.30 till 7.0 PM. Dull, till after 5 PM. then some sun,
but practically no insects out.

Rode to Roughty Bridge & collected along roadsides between that and
Sheen Bridgel on the southside of "The Sound".

Bombus lucorum a few ♀
symbols], & 1 ♀, mostly at bramble.

B. jonellus ♀
numerous, at bramble & even at Foxglove.

B. agrorum ♀ & ♀
female symbols], mainly at foxglove.

Andrena coitana a few torpid ♂
symbols] & ♀ at Jasione.

A. Stelfox - Field Notes, Volume 7, 1935-1936
Transcribed and Reviewed by Digital Volunteers
Extracted Apr-23-2024 10:34:26



Smithsonian Institution

Smithsonian Institution Archives

The mission of the Smithsonian is the increase and diffusion of knowledge - shaping the future by preserving our heritage, discovering new knowledge, and sharing our resources with the world. Founded in 1846, the Smithsonian is the world's largest museum and research complex, consisting of 19 museums and galleries, the National Zoological Park, and nine research facilities. Become an active part of our mission through the Transcription Center. Together, we are discovering secrets hidden deep inside our collections that illuminate our history and our world.

Join us!

The Transcription Center: <https://transcription.si.edu>

On Facebook: <https://www.facebook.com/SmithsonianTranscriptionCenter>

On Twitter: [@TranscribeSI](https://twitter.com/TranscribeSI)

Connect with the Smithsonian

Smithsonian Institution: www.si.edu

On Facebook: <https://www.facebook.com/Smithsonian>

On Twitter: [@smithsonian](https://twitter.com/smithsonian)