



## Smithsonian Institution

*Smithsonian Institution Archives*

### A. Stelfox - Field Notes, Volume 7, 1935-1936

Extracted on Mar-29-2023 10:08:24

**The Smithsonian Institution thanks all digital volunteers that transcribed and reviewed this material. Your work enriches Smithsonian collections, making them available to anyone with an interest in using them.**

The Smithsonian Institution (the "Smithsonian") provides the content on this website ([transcription.si.edu](https://transcription.si.edu)), other Smithsonian websites, and third-party sites on which it maintains a presence ("SI Websites") in support of its mission for the "increase and diffusion of knowledge." The Smithsonian invites visitors to use its online content for personal, educational and other non-commercial purposes. By using this website, you accept and agree to abide by the [following terms](#).

- If sharing the material in personal and educational contexts, please cite the Smithsonian Institution Archives as source of the content and the project title as provided at the top of the document. Include the accession number or collection name; when possible, link to the Smithsonian Institution Archives website.
- If you wish to use this material in a for-profit publication, exhibition, or online project, please contact Smithsonian Institution Archives or [transcribe@si.edu](mailto:transcribe@si.edu)

For more information on this project and related material, contact the Smithsonian Institution Archives. [See this project](#) and other collections in the Smithsonian Transcription Center.

8.)

29.6.35 aft. cont. Slaheny Valley, SK., cont.

Crabro palmipes & varius, both at 2; varius at 3.

C. IV-maculatus at oak & gate post at 3.

Athalia lineolata 1 ~~common ?~~ var., in marsh at 1.

Tenthredopsis nassata, 1 red & black ~~female symbol~~ on oak at 2.

Tenthredella atra, ~~female symbol~~ on oak at 2.

Centeterus 1 ~~male symbol~~ swept at 1.

Small red Cryptids swept at 1.

Pimpla instigator ~~female symbol~~ seen on oak at 2. P. [alternarus?] var kolthoff - ~~male symbol~~ at 2. ~~line~~

Pimpla elegans many ~~2 male symbols~~ at oak at 2 : "der Tag"!

P. roborator (fide J.F.P.) ~~2 male symbols~~ swarming round top of oak, but only one came within reach & var caught: "der Tag" also!

Mesoleid 4 ~~2 male symbols~~, some reddish, some nearly black at oak at 2.

Banchus volutatorius ~~male symbol~~ on oak at 2

Campoplex red & black, on oak at 2.

"~~Ditto for: Campoplex~~" smaller 1 also at 2.

Campoplegis 1 at 2.

Mesochorus 1 ~~male symbol~~ on oak at 2.

Dacnusa areolaris & Bracon fuscipes ~~2 male symbols~~ only, abundant in marsh at 1.

Apanteles 2 spp? ~~2 male symbols~~

~~end page~~

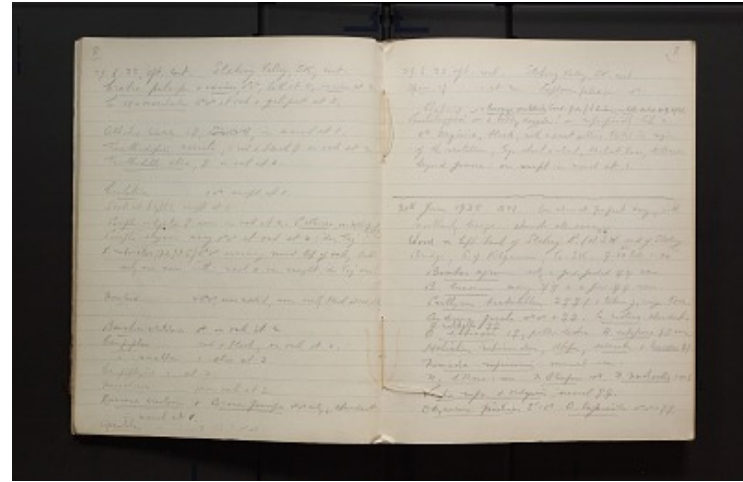
~~start page~~

(9.)

29.6.35 aft. cont. Slaheny Valley, SK. cont.

Opius cf 1 at 2 Euphorus pallidipes ~~male symbol~~

~~Proctotrupids~~ Chalcid - = Eucomys scutellata Swed. fide J.F. Perkins, in litt. dated 6.9.1935, - a bobby dazzler! - superficially like a ~~male~~ Dryinid, black, with a great yellow blotch in region of the scutellum, legs short & stout, black at base, testaceum beyond femora: one swept in marsh at 1.



[[line across page]]

30th June 1935. AM. An almost perfect day, with northerly breeze, almost all sunny.  
Wood on left bank of Slaheny R. (at S.W. end of Slaheny Bridge, S. of Kilgarvan, Co. SK. 9.30 AM till 1.30 PM.  
[[u]] Bombus agrorum [[/u]] only a few faded [[2 female symbols]] seen.  
[[u]] B. lucorum [[/u]] many [[2 virgin female symbols]] & a few [[2 female symbols]] seen.  
[[u]] Psithyrus barbutellus [[/u]] 2 [[2 female symbols]] (1 taken), wings torn.  
Andrena fucata [[2 male symbols]] & [[2 female symbols]]. [[u]] A. coitana [[/u]] abundant.  
[[u]] A. wilkella [[/u]] [[2 female symbols]]  
[[u]] Halictus rubicundus, albipes, calceatus [[/u]] & [[u]] leucopus [[/u]] [[2 female symbols]].  
[[u]] Nomada ruficornis [[/u]] several seen.  
[[u]] N. hillana [[/u]] 1 seen. [[u]] N. obtusifrons [[/u]] 1 [[male symbol]] [[u]] N. marshamella [[/u]] 1 worn [[female symbol]]  
[[u]] Vespa rufa & vulgaris [[/u]], several [[2 female symbols]].  
[[u]] Odynerus parietinus [[/u]] ~~?~~ ?  
~~?~~ 1 [[male symbol]] [[u]] O. trifasciatus [[/u]] [[2 male symbols]] & [[2 female symbols]].

A. Stelfox - Field Notes, Volume 7, 1935-1936  
Transcribed and Reviewed by Digital Volunteers  
Extracted Mar-29-2023 10:08:24



## Smithsonian Institution

*Smithsonian Institution Archives*

The mission of the Smithsonian is the increase and diffusion of knowledge - shaping the future by preserving our heritage, discovering new knowledge, and sharing our resources with the world. Founded in 1846, the Smithsonian is the world's largest museum and research complex, consisting of 19 museums and galleries, the National Zoological Park, and nine research facilities. Become an active part of our mission through the Transcription Center. Together, we are discovering secrets hidden deep inside our collections that illuminate our history and our world.

Join us!

The Transcription Center: <https://transcription.si.edu>

On Facebook: <https://www.facebook.com/SmithsonianTranscriptionCenter>

On Twitter: [@TranscribeSI](https://twitter.com/TranscribeSI)

Connect with the Smithsonian

Smithsonian Institution: [www.si.edu](http://www.si.edu)

On Facebook: <https://www.facebook.com/Smithsonian>

On Twitter: [@smithsonian](https://twitter.com/smithsonian)