



Smithsonian Institution

Smithsonian Institution Archives

A. Stelfox - Field Notes, Volume 7, 1935-1936

Extracted on Mar-29-2023 10:09:02

The Smithsonian Institution thanks all digital volunteers that transcribed and reviewed this material. Your work enriches Smithsonian collections, making them available to anyone with an interest in using them.

The Smithsonian Institution (the "Smithsonian") provides the content on this website (transcription.si.edu), other Smithsonian websites, and third-party sites on which it maintains a presence ("SI Websites") in support of its mission for the "increase and diffusion of knowledge." The Smithsonian invites visitors to use its online content for personal, educational and other non-commercial purposes. By using this website, you accept and agree to abide by the [following terms](#).

- If sharing the material in personal and educational contexts, please cite the Smithsonian Institution Archives as source of the content and the project title as provided at the top of the document. Include the accession number or collection name; when possible, link to the Smithsonian Institution Archives website.
- If you wish to use this material in a for-profit publication, exhibition, or online project, please contact Smithsonian Institution Archives or transcribe@si.edu

For more information on this project and related material, contact the Smithsonian Institution Archives. [See this project](#) and other collections in the Smithsonian Transcription Center.

10.)

30.6.35 AM cont. Slaheny Wood, SK cont.

Gorytes mystaceus [2 female symbols]
Nysson spinosus [2 male symbols] & [2 female symbols]
Crabro chrysostomus [2 male symbols], 1 [female symbol] seen.
C. leucostomus a few [female symbol] & [male symbol].
C. varius too abundant.
C. ~~styrius~~ capitosus
~~1 [male symbol] 1 [female symbol] 2~~ [2 male symbols], on oak, one with hind metatarsus testaceum the other with them dark.
[line]
C. tibiale [male symbol] & [female symbol].

Salius notatulus [?] [checkmark], 1 [female symbol].
Pompilus nigerrimus [2 male symbols] common.

Tenthredella livida 1 black [female symbol] seen.
Fenusa pumila ? 1 [female symbol] on birch.
Athalia sp. abundant : none taken.
Eriocampa ovata 1 [female symbol] on alder.

Foenus assectator : 1 [male symbol] at stick, by stump.

[end page]
[start page]

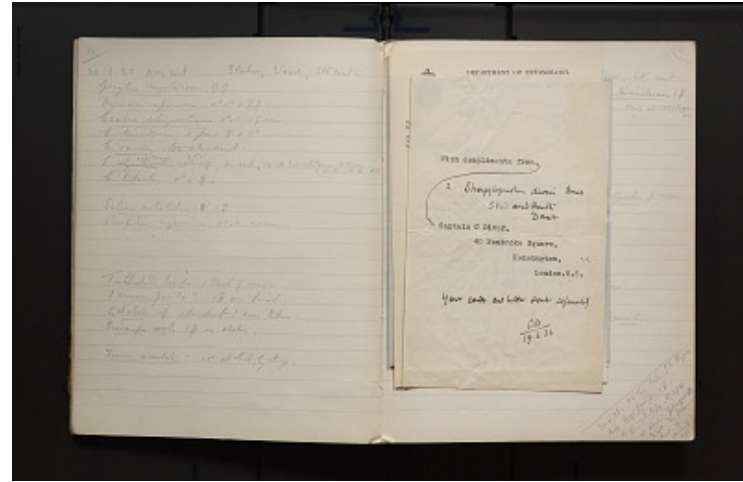
[loose leaf pieces of paper obscuring text]

With compliments from
[pencil line leading to Captain C Diver]

^ [2. Strongylognathus [deveri?] Davis
Studland Heath
Dorset]

Captain C. Diver,
40 Pembroke Square,
Kensington,
London.W.8.

^ [Your cards and letter sent separately]



CW
19.6.36]]

A. Stelfox - Field Notes, Volume 7, 1935-1936
Transcribed and Reviewed by Digital Volunteers
Extracted Mar-29-2023 10:09:02



Smithsonian Institution

Smithsonian Institution Archives

The mission of the Smithsonian is the increase and diffusion of knowledge - shaping the future by preserving our heritage, discovering new knowledge, and sharing our resources with the world. Founded in 1846, the Smithsonian is the world's largest museum and research complex, consisting of 19 museums and galleries, the National Zoological Park, and nine research facilities. Become an active part of our mission through the Transcription Center. Together, we are discovering secrets hidden deep inside our collections that illuminate our history and our world.

Join us!

The Transcription Center: <https://transcription.si.edu>

On Facebook: <https://www.facebook.com/SmithsonianTranscriptionCenter>

On Twitter: [@TranscribeSI](https://twitter.com/TranscribeSI)

Connect with the Smithsonian

Smithsonian Institution: www.si.edu

On Facebook: <https://www.facebook.com/Smithsonian>

On Twitter: [@smithsonian](https://twitter.com/smithsonian)