



Smithsonian Institution

Smithsonian Institution Archives

A. Stelfox - Field Notes, Volume 7, 1935-1936

Extracted on Mar-28-2024 01:48:57

The Smithsonian Institution thanks all digital volunteers that transcribed and reviewed this material. Your work enriches Smithsonian collections, making them available to anyone with an interest in using them.

The Smithsonian Institution (the "Smithsonian") provides the content on this website (transcription.si.edu), other Smithsonian websites, and third-party sites on which it maintains a presence ("SI Websites") in support of its mission for the "increase and diffusion of knowledge." The Smithsonian invites visitors to use its online content for personal, educational and other non-commercial purposes. By using this website, you accept and agree to abide by the [following terms](#).

- If sharing the material in personal and educational contexts, please cite the Smithsonian Institution Archives as source of the content and the project title as provided at the top of the document. Include the accession number or collection name; when possible, link to the Smithsonian Institution Archives website.
- If you wish to use this material in a for-profit publication, exhibition, or online project, please contact Smithsonian Institution Archives or transcribe@si.edu

For more information on this project and related material, contact the Smithsonian Institution Archives. [See this project](#) and other collections in the Smithsonian Transcription Center.

22.)

4.7.35 cont. Dunkerron, SK. cont.

Vespa sylvestris 1 [virgin female symbol] at
Scrophularia nodosa in garden.

Odynerus parietinus [2 female symbols] in
garden & round house.

Crabro ~~styrius~~

caffitosus? 1 [male symbol] in garden on loganberry
in AM. [insertion] Also 1 [male symbol] C. cavifrons
in garden. [insertion]

C. varius & dimidatus
[2 male symbols] & [2 female symbols] very common in
garden.

Pemphredon shuckardi 1 [male symbol] in
garden in AM.

Melanichneumon pesserator? 1 [male symbol] seen,
& caterpillar of Cinnabar moth, on groundsel, in garden.

Cryptus? black [male symbol], red legs & white socks : cf.

"moschatus dark var" of A. Roman.

Cryptids 3 [2 male symbols], 1 [female symbol].

Pimpla macutor 2 [2 male symbols]
examined

P. instigator 1 [underlined] very
[underlined] large [female symbol] seen, 1 very small [female
symbol] taken, in garden in PM.

Tryphon brachyacanthus 1 [male symbol]
in garden, in PM.

Mesoleium ? small [male symbol] at rubbish heap under trees at end of
front field in PM.

Barsus tricoloratus? 1 [male symbol] with
last; in PM.

Stenomacrus caudatus ? 1 [female
symbol] (carded) in A.M.

Campoplegids. - Angitia? 1 in AM & 1 in PM.

Thersilochus ? [male symbol] & [female
symbol] at Stachys sylvatica near stream,
in PM.

[end page]

[start page]

(23.

4.7.35 cont. Dunkerron, SK cont.

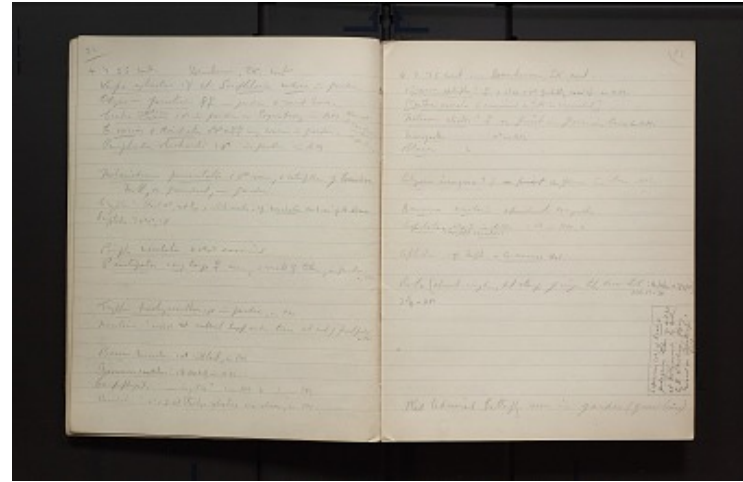
Bracon epitriptus ? [female symbol] & also
1 [male symbol] probably same sp. in A.M.

[Spathius exarator] [female symbol]
examined on table in verandah

Meteorus atrator ? [female symbol] on
privet in flower in lane in A.M.

Microgaster [male symbol] in AM.

Blacus 2



Alysia incongrua ? ♀ on
privet in flower in lane A.M.

Dacnusa areolaris abundant everywhere.
Aspilota ^{[[insertion]]} = Synaldis concolor
[[/insertion]] ? ♂ & ♀ in A.M.
1 ♂ in PM. =

Aphidus 1 ♀ kept = A avenae
Hal.

Procto [almost wingless, but stumps of wings like drum-sticks : this
taken on 3/7/35] A.W.S. 17.1.36
2 spp. on AM.

A specimen (♂) of Crabro
podagricus taken on 4.7.35 at Dollymount, Co. Dublin, by
E. O'Mahony, flying around an old stump! A.W.S.

Red Admiral butterfly seen in garden (green-house).

A. Stelfox - Field Notes, Volume 7, 1935-1936
Transcribed and Reviewed by Digital Volunteers
Extracted Mar-28-2024 01:48:57



Smithsonian Institution

Smithsonian Institution Archives

The mission of the Smithsonian is the increase and diffusion of knowledge - shaping the future by preserving our heritage, discovering new knowledge, and sharing our resources with the world. Founded in 1846, the Smithsonian is the world's largest museum and research complex, consisting of 19 museums and galleries, the National Zoological Park, and nine research facilities. Become an active part of our mission through the Transcription Center. Together, we are discovering secrets hidden deep inside our collections that illuminate our history and our world.

Join us!

The Transcription Center: <https://transcription.si.edu>

On Facebook: <https://www.facebook.com/SmithsonianTranscriptionCenter>

On Twitter: [@TranscribeSI](https://twitter.com/TranscribeSI)

Connect with the Smithsonian

Smithsonian Institution: www.si.edu

On Facebook: <https://www.facebook.com/Smithsonian>

On Twitter: [@smithsonian](https://twitter.com/smithsonian)