



Smithsonian Institution

Smithsonian Institution Archives

A. Stelfox - Field Notes, Volume 7, 1935-1936

Extracted on Apr-24-2024 01:06:49

The Smithsonian Institution thanks all digital volunteers that transcribed and reviewed this material. Your work enriches Smithsonian collections, making them available to anyone with an interest in using them.

The Smithsonian Institution (the "Smithsonian") provides the content on this website (transcription.si.edu), other Smithsonian websites, and third-party sites on which it maintains a presence ("SI Websites") in support of its mission for the "increase and diffusion of knowledge." The Smithsonian invites visitors to use its online content for personal, educational and other non-commercial purposes. By using this website, you accept and agree to abide by the [following terms](#).

- If sharing the material in personal and educational contexts, please cite the Smithsonian Institution Archives as source of the content and the project title as provided at the top of the document. Include the accession number or collection name; when possible, link to the Smithsonian Institution Archives website.
- If you wish to use this material in a for-profit publication, exhibition, or online project, please contact Smithsonian Institution Archives or transcribe@si.edu

For more information on this project and related material, contact the Smithsonian Institution Archives. [See this project](#) and other collections in the Smithsonian Transcription Center.

28.)

6th July 1935. Very hot & close in morning, dull; but after 1 PM. all sunny & still hotter, little breeze S-SE.

Sheen River & Drumanassig Bridge, Co. SK.

10.30 AM till 3.30 PM.

Wood about a mile from Kenmare near bridge = 1

^ Left River bank by Sheen River, as in 1933 & 1934, just above small wood, about 2 miles below Drumanassig Br. = 2
Moraine ^ on left bank across valley at Drumanassig Bridge = 3

Right bank of river at Drumanassig Bridge = 4.

Bombus agrorum & lucorum, only 1 or two seen all day.

Andrena humilis [[2 female symbols]]

nesting in path on summit of moraine at 3 & on borean by river

below bridge at 4.

A. tarsata [[2 male symbol]] & a few fresh [[2 female symbols]] at 2.

A. coitana a few [[2 male symbols]] at 2, [[2 male symbols]] & [[2 female symbols]] common at 3.

A. gwynana [[2 male symbols]] & [[2 female symbols]] at 3.

Halictus rubicundus [[2 male symbols]] out at 2, [[2 female symbols]] abundant at 2, 3 & 4.

H. calceatus, albipes, freygessneri & nitidiusculus

probably seen at 2 & 3.

H. leucopus [[2 female symbols]] at 2 & 3 certainly.

[[end page]]

[[start page]]

(29.)

6.7.35 cont. Sheen River, SK. cont.

Sphecodes monilicornis [[2 female symbols]] at 2. S. affinis ? [[2 female symbols]] at 3.

Hylaeus minutus only 1 ([[female symbol]]) seen, this in Jasione at 4.

[Vespa: none seen all day]

Odynerus pictus ? 1 [[female symbol]] at 4.

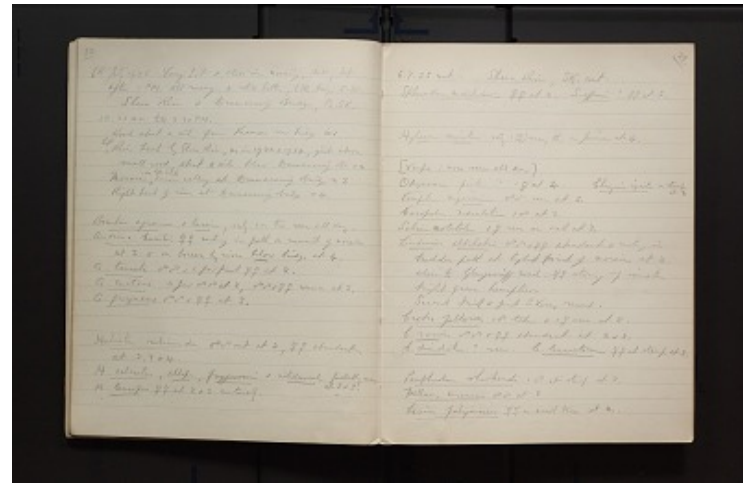
Chrysis ignita on stump at 2

Pompilus nigerrimus [[2 male symbols]] seen at 3.

Ceropales maculatus 1 [[male symbol]] at 3.

Salix notatulus 1 [[female symbol]] seen on oak at 3.

Lindenius albilabris [[2 male symbols]] & [[2 female symbols]] abundant & nesting in trodden path at highest point of moraine at 3 close to Glengarriff road: [[2 male symbols]] storing up immature bright green hemipterous.



Second Irish & first S. Kerry record.

Crabro peltarius 1 ♂ taken & 1 ♀ seen at 2.

C. varius 2 ♂ & 2 ♀ abundant at 2 & 3.

C. dimidiatus ? seen. C. leucostoma 2 ♀ at stumps at 3.

Pemphrodon shuckardi 1 ♂ at stump at 3.

Mellinus arvensis 2 ♂ at 3.

Larius fuliginosus 2 virgin ♀ on usual tree at 2.

A. Stelfox - Field Notes, Volume 7, 1935-1936
Transcribed and Reviewed by Digital Volunteers
Extracted Apr-24-2024 01:06:49



Smithsonian Institution

Smithsonian Institution Archives

The mission of the Smithsonian is the increase and diffusion of knowledge - shaping the future by preserving our heritage, discovering new knowledge, and sharing our resources with the world. Founded in 1846, the Smithsonian is the world's largest museum and research complex, consisting of 19 museums and galleries, the National Zoological Park, and nine research facilities. Become an active part of our mission through the Transcription Center. Together, we are discovering secrets hidden deep inside our collections that illuminate our history and our world.

Join us!

The Transcription Center: <https://transcription.si.edu>

On Facebook: <https://www.facebook.com/SmithsonianTranscriptionCenter>

On Twitter: [@TranscribeSI](https://twitter.com/TranscribeSI)

Connect with the Smithsonian

Smithsonian Institution: www.si.edu

On Facebook: <https://www.facebook.com/Smithsonian>

On Twitter: [@smithsonian](https://twitter.com/smithsonian)