



Smithsonian Institution

Smithsonian Institution Archives

A. Stelfox - Field Notes, Volume 7, 1935-1936

Extracted on Apr-24-2024 08:00:23

The Smithsonian Institution thanks all digital volunteers that transcribed and reviewed this material. Your work enriches Smithsonian collections, making them available to anyone with an interest in using them.

The Smithsonian Institution (the "Smithsonian") provides the content on this website (transcription.si.edu), other Smithsonian websites, and third-party sites on which it maintains a presence ("SI Websites") in support of its mission for the "increase and diffusion of knowledge." The Smithsonian invites visitors to use its online content for personal, educational and other non-commercial purposes. By using this website, you accept and agree to abide by the [following terms](#).

- If sharing the material in personal and educational contexts, please cite the Smithsonian Institution Archives as source of the content and the project title as provided at the top of the document. Include the accession number or collection name; when possible, link to the Smithsonian Institution Archives website.
- If you wish to use this material in a for-profit publication, exhibition, or online project, please contact Smithsonian Institution Archives or transcribe@si.edu

For more information on this project and related material, contact the Smithsonian Institution Archives. [See this project](#) and other collections in the Smithsonian Transcription Center.

110.)

15th Sept. 1935. A blustery day, with very high wind, W-SW, & heavy showers: otherwise all sunny & sun very hot.
Shore along railway, where it crosses estuary, 1/2 mile S. of Donabate station, Co. Dublin. 10 till 1. PM.
[Looking under sea-weed &c for Braconids, but hardly any weed & this mainly fresh Zostera & high spring tide soon covered even this: a few insects swept along railway & where this crosses peninsula 1/4 mile S. of road to Corballis.]
Bombus muscorum several [2 male symbols] & [2 virgin female symbols] seen.
B. lapidarius [2 male symbols].
B. agrorum [2 male symbols] or [2 virgin female symbols] seen.
[no other aculeates seen]

Exolytus [female symbol] swept on peninsula.

Pimpla brevicornis 1 [male symbol], several [2 female symbols], probably at Knapweed.

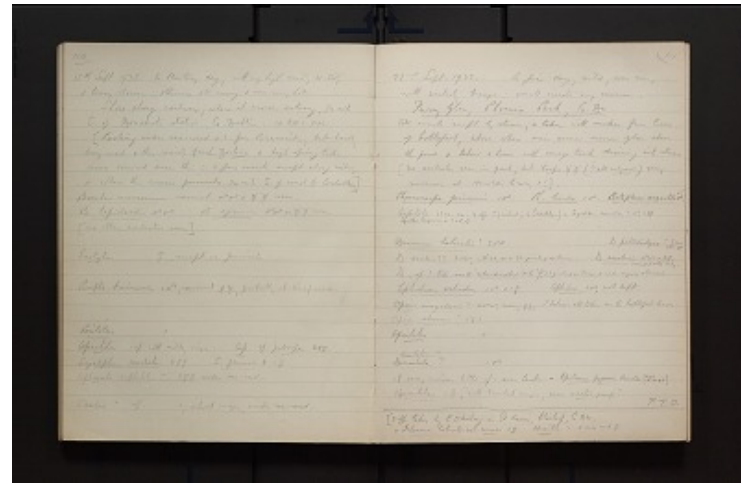
Perilitus 1
Apanteles 1 sp. with milky wings.
Ap. cf. fulvipes [2 female symbols].
Sigalphus caudatus 2 [2 female symbols].
S. floricola [strikethrough] ?
[strikethrough] 1 [female symbol]
Aphaereta cephalotes ? 2 [2 female symbols] under sea-weed.

Scelio ? sp. 1, short wings, under sea-weed.

[end page]
[start page]

111.)

22nd Sept. 1935. A fine day, mild, some sun, with westerly breeze: small insects very numerous.
Furry Glen, Phoenix Park, Co. DU.
All insects swept by stream, or taken with sucker from leaves of Coltsfoot, above where main avenue crosses glen above the pond & below a house with sewage tank draining into stream
[No aculeates seen in park, but Vespa [2 virgin female symbols] (? all vulgaris) very numerous at Harolds Cross, &c.]
Phaenocarpa picinervis 1 [male symbol].
Ph. livida 1 [male symbol].
Pentapleura angustula [checkmark] [male symbol].
Aspilota 15 ex. ca. 7 spp.? (including 2 Synaldis = Synaldis concolor ? 1 [male symbol], 2 [2 female symbols]
Synaldis longicornis m ? 1 [male symbol], 1 [female symbol].



Dacnusa lateralis ? 2 [2 male symbols] D
 pallidistigma ? 7 exx [2 male symbols] & [2 female symbols].
 D. ovalis ?? 3 [2 male symbols], with 26, 31 & 35 jointed antennae.
D. areolaris [2 male symbols] & [2 female
 symbols] 1 small [female symbol] mtd. only.
 D. sp.? like small "rotundiventris mihi",
 [female symbol], 35 jointed antennae & wide rugose sternauli.
Ephedrus validus 1 [male symbol] & 1
 [female symbol] Aphidius, 1 [male
 symbol], not kept.
Opius irregularis ? 2 [2 male symbols],
 many [2 female symbols], I believe all taken on the Coltsfoot leaves.
Opius clarus ? 1 [female symbol] 1
Apanteles - 1

~~Dicaelotus~~ ? [insertion] Centeterus ?
 [insertion] - 1 [male symbol]
 1 [female symbol] very curious little sp. near last. = Epitomus pygmaeus Brischke {AWS. 5.11.35.}
Hemiteles 1 [female symbol], with banded
 wings, near areator group?
 P.T.O.
 [line across page]
 2 spp. taken by E. O'Mahony in St. Anne's, Clontarf, Co. DU.
 = Ichneumon latrator var means 1 [female symbol]. Hemiteles
? a nice red [female symbol].

A. Stelfox - Field Notes, Volume 7, 1935-1936
 Transcribed and Reviewed by Digital Volunteers
 Extracted Apr-24-2024 08:00:23



Smithsonian Institution

Smithsonian Institution Archives

The mission of the Smithsonian is the increase and diffusion of knowledge - shaping the future by preserving our heritage, discovering new knowledge, and sharing our resources with the world. Founded in 1846, the Smithsonian is the world's largest museum and research complex, consisting of 19 museums and galleries, the National Zoological Park, and nine research facilities. Become an active part of our mission through the Transcription Center. Together, we are discovering secrets hidden deep inside our collections that illuminate our history and our world.

Join us!

The Transcription Center: <https://transcription.si.edu>

On Facebook: <https://www.facebook.com/SmithsonianTranscriptionCenter>

On Twitter: [@TranscribeSI](https://twitter.com/TranscribeSI)

Connect with the Smithsonian

Smithsonian Institution: www.si.edu

On Facebook: <https://www.facebook.com/Smithsonian>

On Twitter: [@smithsonian](https://twitter.com/smithsonian)