



Smithsonian Institution

Smithsonian Institution Archives

Ecological studies from Korea, 1965-1966

Extracted on Apr-19-2024 06:53:30

The Smithsonian Institution thanks all digital volunteers that transcribed and reviewed this material. Your work enriches Smithsonian collections, making them available to anyone with an interest in using them.

The Smithsonian Institution (the "Smithsonian") provides the content on this website (transcription.si.edu), other Smithsonian websites, and third-party sites on which it maintains a presence ("SI Websites") in support of its mission for the "increase and diffusion of knowledge." The Smithsonian invites visitors to use its online content for personal, educational and other non-commercial purposes. By using this website, you accept and agree to abide by the [following terms](#).

- If sharing the material in personal and educational contexts, please cite the Smithsonian Institution Archives as source of the content and the project title as provided at the top of the document. Include the accession number or collection name; when possible, link to the Smithsonian Institution Archives website.
- If you wish to use this material in a for-profit publication, exhibition, or online project, please contact Smithsonian Institution Archives or transcribe@si.edu

For more information on this project and related material, contact the Smithsonian Institution Archives. [See this project](#) and other collections in the Smithsonian Transcription Center.

Smithsonian- NBC DMZ shots

Roll # 3

First scene--Freedom bridge from rice paddy side to the DMZ side. Both low and high level views.

Scene 2--Lt. Col T. H. Middleton Jr. showing Tyson and Chang some points of interest on the map. Note " 2nd Division sign in the background.

Scene 3---The tall grass--Miscanthus facing into the sun. The whole field is a mine mine field as is shown by the sign near the camera. Probably the most dangerous place in the DMZ.

Scene 4---Railroad bridge across small creek showing how much the vegetation has grown since the DMZ was established. Lt. Col. Middleton showing us the map and the location of North Korean Out Post. Scene across abandoned rice paddies.

Scene 5---Orange and white bar is the entrance to the DMZ proper, Shot leads from this to the white [^][?] that marks the southern limit of the DMZ.

Roll # 4

Shot over rice paddy showing ~~hills~~ hills in background. Before the DMZ was abandoned these were naked hillsides. The far hill is an out post of the 2nd Division. They keep the area around the OP open for better visibility. Note [^][[t]]he vegetation in the foreground that has grown up since 1950. Grass again is Miscanthus.

Scene 2--Creek bed in DMZ. Note how the once diked creek has grown up and the trees--mostly willow (Salix) on the shore.

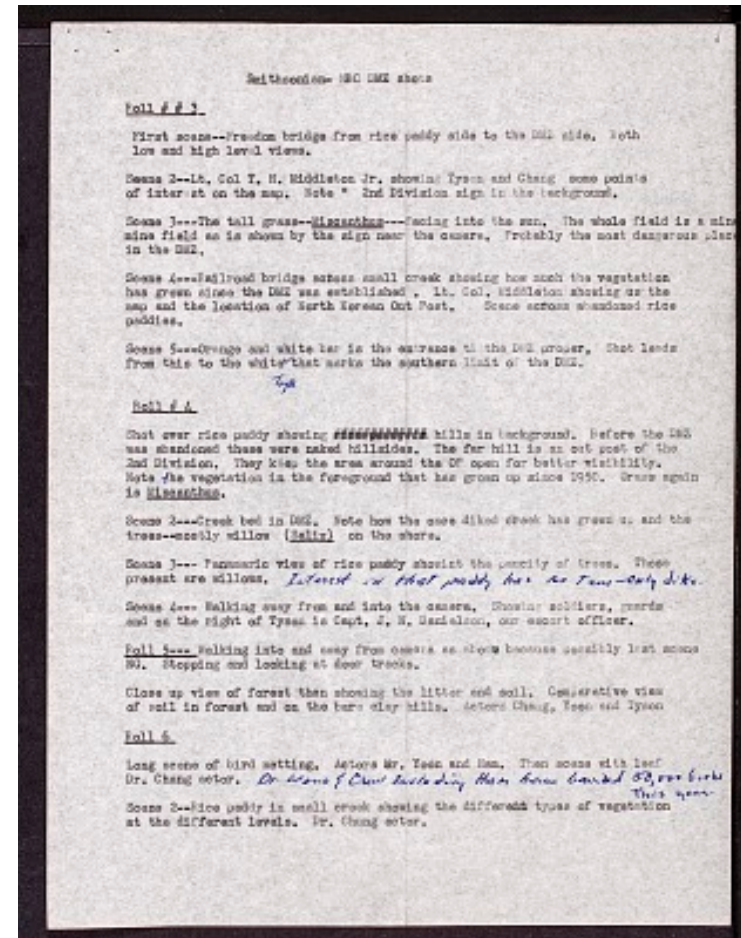
Scene 3--Panamarc view of rice paddy showing the paucity of trees. Those present are willows. [^][[Interest in that paddy has no trees - only dike.]]

Scene 4-- Walking away from and into the camera. Showing soldiers, guards and on the right of Tyson is Capt. J. N. Danielson, our escort officer.

Roll 5 Walking into and away from camera as above because possibly last scene NG. Stopping and looking at deer tracks.

Close up view of forest then showing the litter and soil. Comparative view of soil in forest and on the bare clay hills. Actors Chang, Yoon and Tyson

Roll 6



Long scene of bird netting. Actors Mr. Yoon and Ham. Then scene with leaf Dr. Wang actor. ^[[Dr. Wong & Crew including Ham has banded 50,000 birds this year.]]

Scene 2--Rice paddy in small creek showing the different types of vegetation at the different levels. Dr. Chung actor.

Ecological studies from Korea, 1965-1966
Transcribed and Reviewed by Digital Volunteers
Extracted Apr-19-2024 06:53:30



Smithsonian Institution

Smithsonian Institution Archives

The mission of the Smithsonian is the increase and diffusion of knowledge - shaping the future by preserving our heritage, discovering new knowledge, and sharing our resources with the world. Founded in 1846, the Smithsonian is the world's largest museum and research complex, consisting of 19 museums and galleries, the National Zoological Park, and nine research facilities. Become an active part of our mission through the Transcription Center. Together, we are discovering secrets hidden deep inside our collections that illuminate our history and our world.

Join us!

The Transcription Center: <https://transcription.si.edu>

On Facebook: <https://www.facebook.com/SmithsonianTranscriptionCenter>

On Twitter: [@TranscribeSI](https://twitter.com/TranscribeSI)

Connect with the Smithsonian

Smithsonian Institution: www.si.edu

On Facebook: <https://www.facebook.com/Smithsonian>

On Twitter: [@smithsonian](https://twitter.com/smithsonian)