



Smithsonian Institution

Smithsonian Institution Archives

Department of Birds: Annual and Monthly Reports 1884

Extracted on Apr-24-2024 09:14:49

The Smithsonian Institution thanks all digital volunteers that transcribed and reviewed this material. Your work enriches Smithsonian collections, making them available to anyone with an interest in using them.

The Smithsonian Institution (the "Smithsonian") provides the content on this website (transcription.si.edu), other Smithsonian websites, and third-party sites on which it maintains a presence ("SI Websites") in support of its mission for the "increase and diffusion of knowledge." The Smithsonian invites visitors to use its online content for personal, educational and other non-commercial purposes. By using this website, you accept and agree to abide by the [following terms](#).

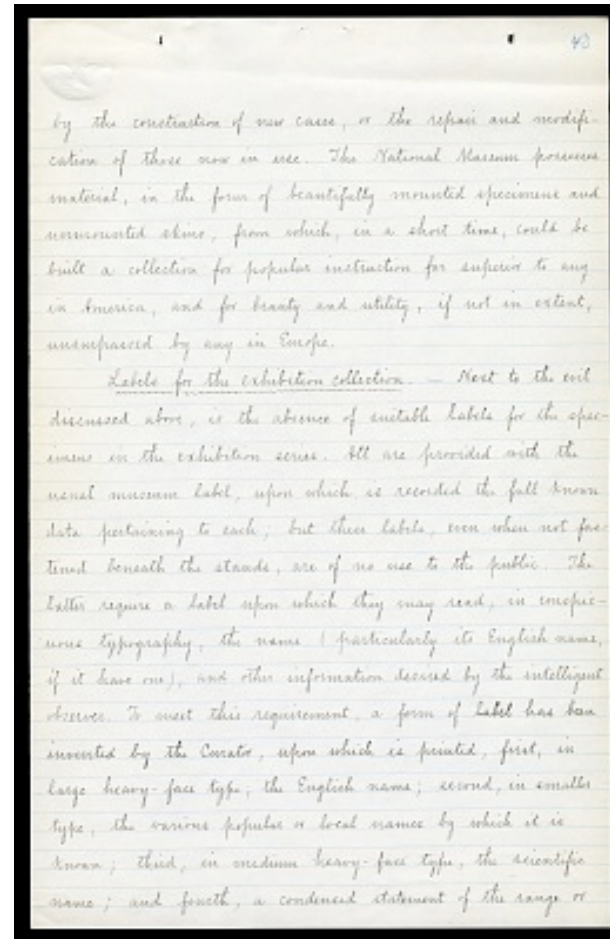
- If sharing the material in personal and educational contexts, please cite the Smithsonian Institution Archives as source of the content and the project title as provided at the top of the document. Include the accession number or collection name; when possible, link to the Smithsonian Institution Archives website.
- If you wish to use this material in a for-profit publication, exhibition, or online project, please contact Smithsonian Institution Archives or transcribe@si.edu

For more information on this project and related material, contact the Smithsonian Institution Archives. [See this project](#) and other collections in the Smithsonian Transcription Center.

[[in blue]] ^[[43]] [[/in blue]]

by the construction of new cases, or the repair and modification of those now in use. The National Museum possesses material, in the form of beautifully mounted specimens and unmounted skins, from which, in a short time, could be built a collection for popular instruction far superior to any in America, and for beauty and utility, if not in extent, unsurpassed by any in Europe.

[[underlined]] Labels for the exhibition collection. [[/underlined]] - Next to the evil discussed above, is the absence of suitable labels for the specimens in the exhibition series. All are provided with the usual museum label, upon which is recorded the full known data pertaining to each; but these labels, even when not fastened beneath the stands, are of no use to the public. The latter require a label upon which they may read, in conspicuous typography, the name (particularly its English name, if it have one), and other information desired by the intelligent observer. To meet this requirement, a form of label has been invented by the Curator, upon which is printed, first, in large heavy-face type, the English name; second, in smaller type, the various popular or local names by which it is known; third, in medium heavy-face type, the scientific name; and fourth, a condensed statement of the range or



Department of Birds: Annual and Monthly Reports 1884
Transcribed and Reviewed by Digital Volunteers
Extracted Apr-24-2024 09:14:49



Smithsonian Institution

Smithsonian Institution Archives

The mission of the Smithsonian is the increase and diffusion of knowledge - shaping the future by preserving our heritage, discovering new knowledge, and sharing our resources with the world. Founded in 1846, the Smithsonian is the world's largest museum and research complex, consisting of 19 museums and galleries, the National Zoological Park, and nine research facilities. Become an active part of our mission through the Transcription Center. Together, we are discovering secrets hidden deep inside our collections that illuminate our history and our world.

Join us!

The Transcription Center: <https://transcription.si.edu>

On Facebook: <https://www.facebook.com/SmithsonianTranscriptionCenter>

On Twitter: [@TranscribeSI](https://twitter.com/TranscribeSI)

Connect with the Smithsonian

Smithsonian Institution: www.si.edu

On Facebook: <https://www.facebook.com/Smithsonian>

On Twitter: [@smithsonian](https://twitter.com/smithsonian)