



Smithsonian Institution

Freer Gallery of Art and Arthur M. Sackler Gallery

Set of Underwood & Underwood stereographs of Japan

Extracted on Apr-23-2024 07:45:19

The Smithsonian Institution thanks all digital volunteers that transcribed and reviewed this material. Your work enriches Smithsonian collections, making them available to anyone with an interest in using them.

The Smithsonian Institution (the "Smithsonian") provides the content on this website (transcription.si.edu), other Smithsonian websites, and third-party sites on which it maintains a presence ("SI Websites") in support of its mission for the "increase and diffusion of knowledge." The Smithsonian invites visitors to use its online content for personal, educational and other non-commercial purposes. By using this website, you accept and agree to abide by the [following terms](#).

- If sharing the material in personal and educational contexts, please cite the Freer Gallery of Art and Arthur M. Sackler Gallery as source of the content and the project title as provided at the top of the document. Include the accession number or collection name; when possible, link to the Freer Gallery of Art and Arthur M. Sackler Gallery website.
- If you wish to use this material in a for-profit publication, exhibition, or online project, please contact Freer Gallery of Art and Arthur M. Sackler Gallery or transcribe@si.edu

For more information on this project and related material, contact the Freer Gallery of Art and Arthur M. Sackler Gallery. [See this project](#) and other collections in the Smithsonian Transcription Center.

You are about half way between Yokohama and Tokio; the capital city is on this side of the river—six or eight miles behind you. A little above here some of the fishermen used trained cormorants to catch fish, reaching down under the running water to seize the prey.

The fishermen you see here carry on their trade in the old and universal way, with nets and lines. Notice how the nets are hung on the mast to dry and how their transparent meshes are repeated in those glassy reflections. If you have ever studied many Japanese drawings you see at once how these artists find themes for the charming sketches which so delight the western eye - here right before you is a scene which would give a Japanese artist material for a dozen fascinating drawings. Water-weed of this sort, with its treadlike stems and leaves, all doubled by reflection in the still waters, have precisely the sort of beauty to be shown with a brush and India ink in the hands of one who knows his art.

The village over there on the western bank is only a small place, but it is the locality of a Buddhist temple containing a miraculous image of an ancient saint. The image is said to have floated across the sea from China and to have been caught in the net of a fishing boat just like these you see here at anchor. That was hundreds of years ago, and the wonderful image, over there in a temple at Kawasaki, is still working miracles of healing and good fortune for those who resort to the shrine to pray. The twenty-first of each month is a particularly lucky day for devotees, and the railroad between Yokohama and Tokio runs special trains to carry pilgrims to and fro on that date. On the 21st of March there is a grand festival in the temple grounds accompanied by all sorts of side-shows.

From Notes of Travel, No. 9, copyright, 1904, by Underwood & Underwood

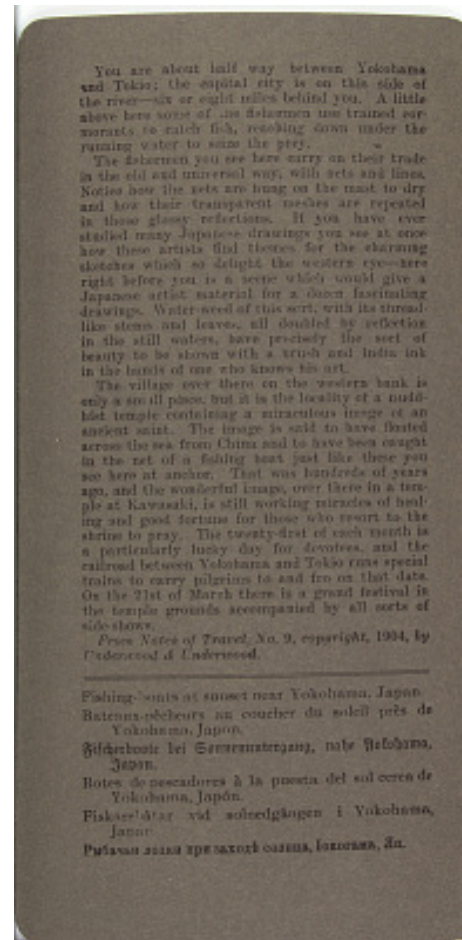
[[double line]]

Fishing-boats at sunset near Yokohama, Japan.

Bateaux-pêcheurs au coucher du soleil près de Yokohama, Japon.

Fischerboote bei Sonnenuntergang, Nahe Yokohama, Japan.
Botes de pescadores à la puesta del sol cerca de Yokohama, Japón.

Fiskarebåtar vid solnedgången i Yokohama, Japan.



Set of Underwood & Underwood stereographs of Japan
Transcribed and Reviewed by Digital Volunteers
Extracted Apr-23-2024 07:45:19



Smithsonian Institution

Freer Gallery of Art and Arthur M. Sackler Gallery

The mission of the Smithsonian is the increase and diffusion of knowledge - shaping the future by preserving our heritage, discovering new knowledge, and sharing our resources with the world. Founded in 1846, the Smithsonian is the world's largest museum and research complex, consisting of 19 museums and galleries, the National Zoological Park, and nine research facilities. Become an active part of our mission through the Transcription Center. Together, we are discovering secrets hidden deep inside our collections that illuminate our history and our world.

Join us!

The Transcription Center: <https://transcription.si.edu>

On Facebook: <https://www.facebook.com/SmithsonianTranscriptionCenter>

On Twitter: [@TranscribeSI](https://twitter.com/TranscribeSI)

Connect with the Smithsonian

Smithsonian Institution: www.si.edu

On Facebook: <https://www.facebook.com/Smithsonian>

On Twitter: [@smithsonian](https://twitter.com/smithsonian)