



**Smithsonian Institution**

*Freer Gallery of Art and Arthur M. Sackler Gallery*

## **Set of Underwood & Underwood stereographs of Japan**

Extracted on Apr-16-2024 02:41:43

**The Smithsonian Institution thanks all digital volunteers that transcribed and reviewed this material. Your work enriches Smithsonian collections, making them available to anyone with an interest in using them.**

The Smithsonian Institution (the "Smithsonian") provides the content on this website ([transcription.si.edu](https://transcription.si.edu)), other Smithsonian websites, and third-party sites on which it maintains a presence ("SI Websites") in support of its mission for the "increase and diffusion of knowledge." The Smithsonian invites visitors to use its online content for personal, educational and other non-commercial purposes. By using this website, you accept and agree to abide by the [following terms](#).

- If sharing the material in personal and educational contexts, please cite the Freer Gallery of Art and Arthur M. Sackler Gallery as source of the content and the project title as provided at the top of the document. Include the accession number or collection name; when possible, link to the Freer Gallery of Art and Arthur M. Sackler Gallery website.
- If you wish to use this material in a for-profit publication, exhibition, or online project, please contact Freer Gallery of Art and Arthur M. Sackler Gallery or [transcribe@si.edu](mailto:transcribe@si.edu)

For more information on this project and related material, contact the Freer Gallery of Art and Arthur M. Sackler Gallery. [See this project](#) and other collections in the Smithsonian Transcription Center.

This beautiful little pond is in the garden of Sumiyoshi temple in a southern suburb of Osaka. The city itself lies in the direction toward which you are looking. The shrines here are exceedingly ancient; according to popular tradition the temple was founded seventeen hundred years ago by Jingo Kong, the celebrated warrior-empress and favorite heroine of Japan, who personally led a naval expedition across the mysterious, unknown seas at the west and gained the allegiance of Korea. The temple to which this garden belongs is dedicated to three gods of the sea who protected the empress in her fateful expedition; it was in fact the first great event in Japanese history, for, through the following centuries of close relations with Korea, the Japanese learned the doctrines of Buddhism, the Chinese system of written language and the elements of many of the art-industries in which this land has since far surpassed her old teachers!

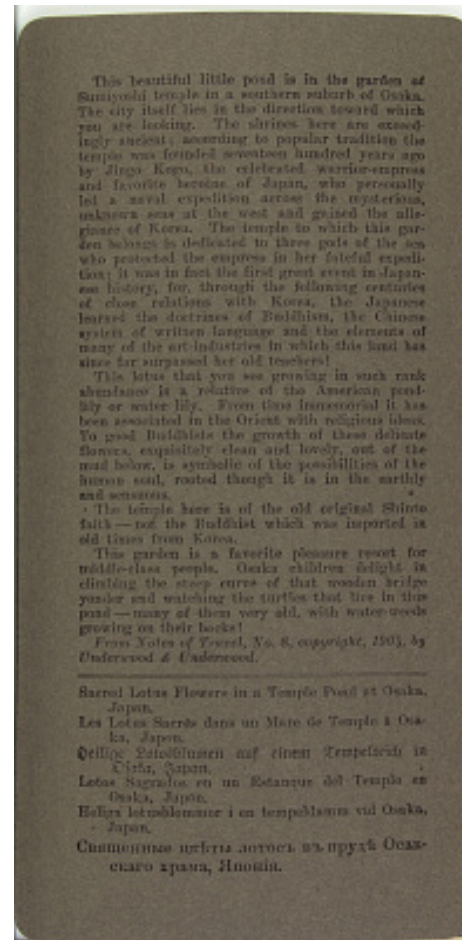
This lotus that you see growing in such rank abundance is a relative of the American pondlily or water lily. From time immemorial it has been associated in the Orient with religious ideas. To good Buddhists the growth of these delicate flowers, exquisitely clean and lovely, out of the mud below, is symbolic of the possibilities of the human soul, rooted though it is in the earthy and sensuous.

The temple here is of the old original Shinto faith - not the Buddhist which was imported in old times from Korea.

This garden is a favorite pleasure resort for middle-class people. Osaka children delight in climbing the steep curve of that wooden bridge yonder and watching the turtles that live in this pond - many of them very old, with water-weeds growing on their backs!

From Notes of Travel, No. 8, copyright, 1904, by Underwood & Underwood.

Sacred Lotus Flowers in a Temple Pond at Osaka, Japan.  
 Les Lotus Sacrés dans un Mare de Temple à Osaka, Japon.  
 Heilige Lotosblumen auf einem Tempelteich in Osaka, Japan.  
 Lotos Sagrados en un Estanque del Templo en Osaka, Japón.  
 Heliga lotusblommor i en tempeldamm vid Osaka, Japan.



Set of Underwood & Underwood stereographs of Japan  
 Transcribed and Reviewed by Digital Volunteers  
 Extracted Apr-16-2024 02:41:43



## Smithsonian Institution

*Freer Gallery of Art and Arthur M. Sackler Gallery*

The mission of the Smithsonian is the increase and diffusion of knowledge - shaping the future by preserving our heritage, discovering new knowledge, and sharing our resources with the world. Founded in 1846, the Smithsonian is the world's largest museum and research complex, consisting of 19 museums and galleries, the National Zoological Park, and nine research facilities. Become an active part of our mission through the Transcription Center. Together, we are discovering secrets hidden deep inside our collections that illuminate our history and our world.

Join us!

The Transcription Center: <https://transcription.si.edu>

On Facebook: <https://www.facebook.com/SmithsonianTranscriptionCenter>

On Twitter: [@TranscribeSI](https://twitter.com/TranscribeSI)

Connect with the Smithsonian

Smithsonian Institution: [www.si.edu](http://www.si.edu)

On Facebook: <https://www.facebook.com/Smithsonian>

On Twitter: [@smithsonian](https://twitter.com/smithsonian)